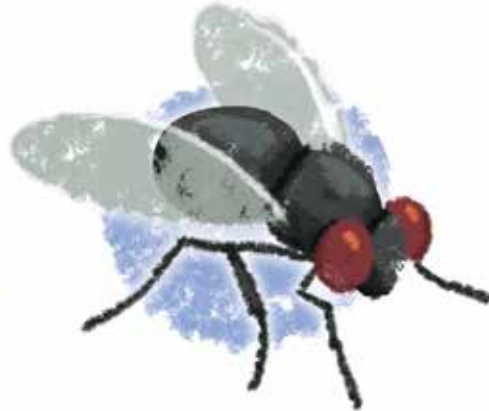


Matching Bugs

DOWNLOAD THE
TGP FAMILY APP

INSTRUCTIONS: Draw a line connecting the bugs that match.



KEY PASSAGE: Hebrews 3:5-6

BIG PICTURE QUESTION:

- What is God's plan? God's plan is to rescue His people.

BIBLE STORY:

THE PLAGUES, THE PASSOVER, AND THE CROSSING OF THE RED SEA

- Pharaoh would not let God's people go.
- God showed Egypt that only He is God by sending 10 plagues.
- God kept His people safe at Passover.
- God parted the Red Sea so the Israelites could walk across.

FAMILY DISCUSSION STARTERS:

- Which of the 10 plagues sounds the worst to you?
- What might you think about as you walked through the Red Sea on dry ground?

FAMILY ACTIVITY:

- Talk about a time your family had to trust God to take care of you.
- Take it further: Choose a family in your community to invite to dinner. Pray for God to use your family to share the gospel.