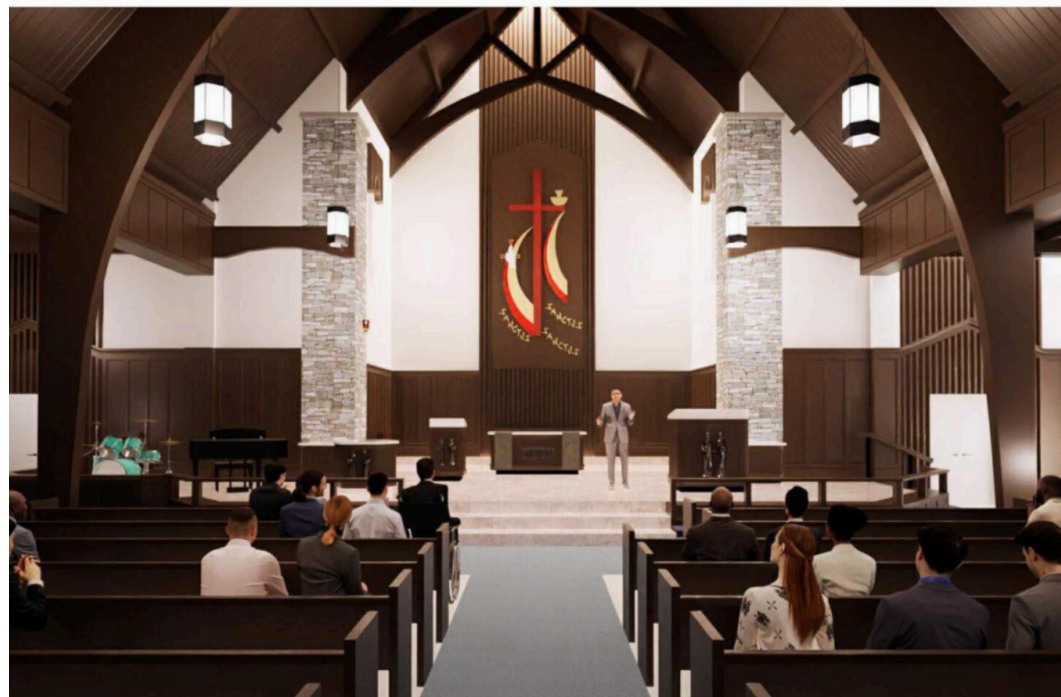


SANCTUARY RENOVATION



1905



1950s-1960s



1970s-1980s



1990s-current

A SACRED PLACE OF DIVINE WORSHIP

Our current Sanctuary continues to welcome thousands of worshippers each year—from children to seniors. It is a sacred space where the Gospel is proclaimed and the Sacraments are faithfully administered. Whether in traditional or contemporary services, weekend and midweek worship, Friday Flock gatherings, school chapel, weddings, or funerals, this Sanctuary remains at the heart of our church life.

With a rich and meaningful history, the Sanctuary was originally built in 1956 with seating for 700 people—to the glory of God. In 1987, the space was expanded through the addition of transepts, along with significant renovations to the interior and chancel. More recently, the narthex was updated in 2016 as part of the Our Father's House: A Beacon of Hope campaign, and the lobby was beautifully renovated in 2018 through the generosity of a faithful donor.

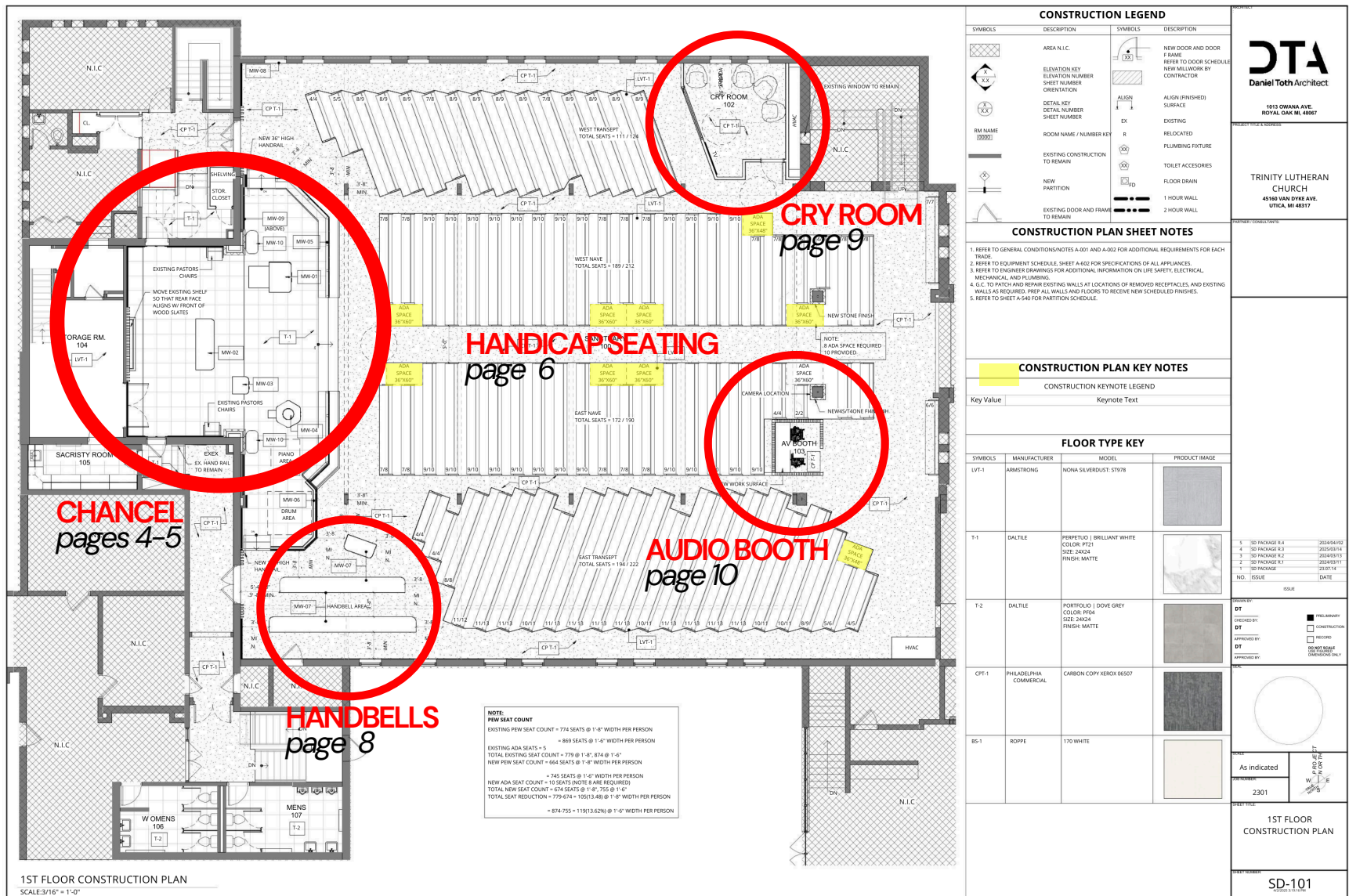
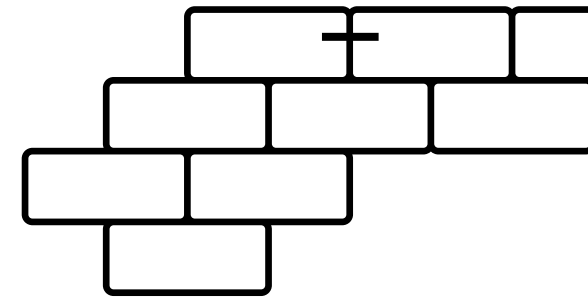
As we continue this current campaign, our prayer is to extend the refreshed and welcoming look of the narthex and lobby into the Sanctuary itself. We also seek to provide updated infrastructure that will serve both current and future generations—ensuring that this cherished space remains a place where God's people can gather in worship, now and for years to come, all to the glory of His name.

SENIOR PASTOR JUSTIN KRUPSKY



For no one can lay a foundation other than
that which is laid, which is Jesus Christ.

1 CORINTHIANS 3:11



CHANCEL AREA

AFTER FURTHER THOUGHTFUL CONSIDERATION SINCE OUR LAST UPDATE, THE PROPOSED CHANCEL EXPANSION HAS BEEN SCALED BACK TO BETTER SERVE THE CURRENT AND FUTURE NEEDS OF OUR CONGREGATION. RATHER THAN EXPANDING THE ENTIRE FOOTPRINT, WE WILL MAINTAIN THE EXISTING CHANCEL AREA AND EXTEND IT TO THE EAST TO INCORPORATE THE PRAISE BAND SPACE.

We still plan to raise the front portion of the chancel, including the praise band area, so it aligns with the main chancel elevation. This improvement will enhance visibility for our online worshipers and better accommodate school chapel services, large choirs, bands, and theatrical events.

The congregation has shown strong support for refreshing the chancel and reredos. These updates are designed to bring a more cohesive look by incorporating design elements from our

beautifully renovated church lobby and narthex—creating a welcoming and unified worship space for all.

Renovations will also take place in the chapel and robing room, located behind the pulpit side of the chancel through the double doors. While not pictured here, these updates are essential to create the necessary space for installing a wheelchair lift, providing accessible entry from the sanctuary floor to the chancel. To meet clearance requirements, some adjustments to the size of these rooms will be needed.

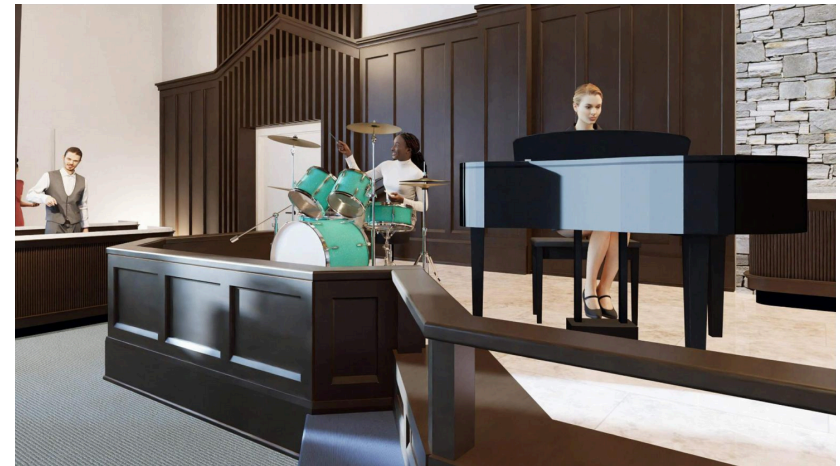


Through each of these changes, our goal is simple: to create a space that reflects our mission and meets the evolving needs of our worshipping community—with care, accessibility, and beauty at the heart of it all.

As we move forward with these changes, our prayer is that this sacred space continues to be a place where God's people gather in unity, worship in spirit and truth, and grow in faith together. May this renovation be one more way God is making a way for His people—now and for generations to come.

CHANCEL AREA KEY FEATURES

- Elevate the chancel to be one level with new tile and expand to the east for a praise band area.
- All chancel furniture is intended to be movable for large group events such as choirs, band concerts, and theatrical events.
- All existing metal artwork to be preserved and reused on new altar furnishings.
- An elevated chancel will result in better sight lines for the congregation and school-led chapel.
- Add handicap accessible methods to access chancel from sanctuary floor.
- Add slatted woodwork around existing reredos. Existing cross and Sanctus mosaic artwork to remain.
- Extend existing wainscoting to flank the chancel east and west with additional slatted woodwork around existing transept exit doors.
- Add stonework to chancel "stone" corners to mimic the décor of the church lobby and narthex.
- Add a second projector and screen above the pulpit to mirror baptismal side.



You yourselves like living stones are being built up as a spiritual house, to be a holy priesthood, to offer spiritual sacrifices acceptable to God through Jesus Christ.
EPHESIANS 2:19-22

HANDICAP SEATING & ACCESSIBILITY

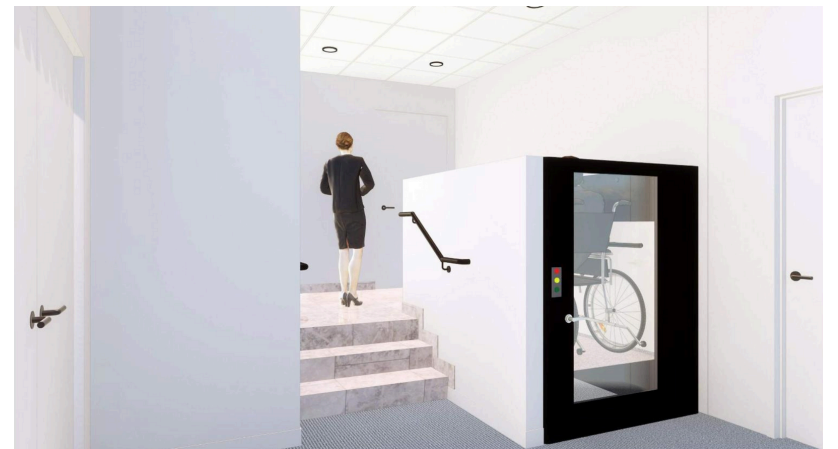
AS WE CONTINUE PLANNING FOR OUR SANCTUARY RENOVATION, WE WANT TO SHARE AN IMPORTANT UPDATE THAT REFLECTS OUR COMMITMENT TO MAKING THIS SACRED SPACE MORE WELCOMING AND ACCESSIBLE FOR EVERYONE.

It was discovered that when we move forward with renovating the chancel, refinishing the pews, and adding a new cry room and sound booth, we will also need to bring the Sanctuary up to current accessibility standards. This is not only a requirement—it's an opportunity to better serve all members of our congregation, especially those with mobility challenges.

To comply with ADA (Americans with Disabilities Act) guidelines, additional handicap-accessible seating will be thoughtfully integrated throughout the Sanctuary.

These seating areas are marked as "ADA Space" on the floor plan page of this booklet. By including these updates, we're not just meeting legal requirements—we're living out our call to care for one another and ensure that every person can fully participate in worship without barriers.

Other adjacent areas such as the chapel and robing room will also be impacted to make room for handicap accessibility/maneuverability to the chancel. We believe these updates are an important expression of our love for each other as a church family.



Key Features:

- Provide multiple locations for handicap seating throughout the sanctuary identified as "ADA Space" on the floor plan illustration.
- New locations allow for easier maneuverability in/out of the handicap spaces and balance their locations throughout the Sanctuary.

These renovations are one way we honor one another—by creating a worship space that truly welcomes all.

SANCTUARY PEWS, PAINT, & FLOORING MATERIALS

IT WAS RECOGNIZED THAT PEWS OFFER A MORE FAMILY-FRIENDLY AND CONNECTED WORSHIP EXPERIENCE THAN OTHER FORMS OF SEATING. TO PRESERVE THE HERITAGE AND WARMTH OF TRINITY'S SANCTUARY, THE EXISTING PEWS AND KNEELERS WILL BE CAREFULLY REFINISHED. THIS ALLOWS US TO HONOR OUR PAST WHILE REFRESHING THE SPACE FOR FUTURE GENERATIONS.

In addition, the replacement of the carpet and tile flooring is necessary. After many faithful years of service, the current flooring materials have exceeded their expected lifespan. Updating them will not only enhance the beauty and safety of our Sanctuary but also help create a more welcoming and comfortable environment for all who enter. As we make these thoughtful updates, we're reminded of Proverbs 24:3: "By wisdom a house is built, and by understanding it is established." These renovations are a reflection of our desire to wisely care for the space where our church family gathers to grow in faith and fellowship.

Key Features:

- Refinish pews and kneelers.
- Repaint the interior of the Sanctuary.
- Add T-Coil hearing loop in the Sanctuary floor to aid the hearing impaired.

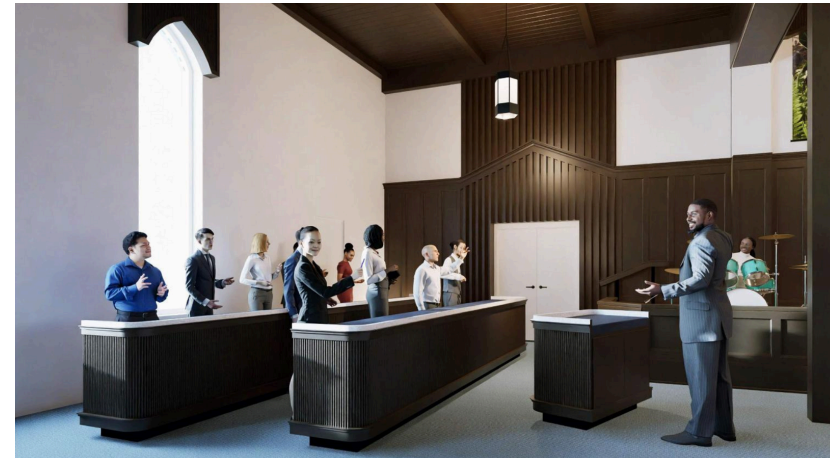


HANDBELL AREA

AFTER FURTHER THOUGHTFUL CONSIDERATION SINCE OUR LAST UPDATE, IT WAS DECIDED TO MOVE THE HANDBELL AREA BACK TO ITS FAMILIAR HOME IN THE EAST TRANSEPT. THIS ADJUSTMENT COMES AS A RESULT OF PLACING THE NEW CRY ROOM IN THE WEST TRANSEPT —ENSURING BOTH FUNCTION AND BALANCE WITHIN OUR WORSHIP SPACE.

Positioning the handbell area in the east transept not only maintains a sense of visual symmetry in the sanctuary but also supports the beautiful tradition of handbell music at Trinity. Designing the area to remain at the same elevation as the Sanctuary floor, along with incorporating movable performance tables, gives us greater flexibility for both worship and special events.

As we seek to honor the gifts God has given our church family, we're reminded of 1 Corinthians 12:4–6 (ESV): “Now there are varieties of gifts, but the same Spirit; and there are varieties of service, but the same Lord; and there are varieties of activities, but it is the same God who empowers them all in everyone.” These changes are being made with care, to create a Sanctuary where all gifts can be used for God’s glory.



**Now there are varieties of
gifts, but the same Spirit; and
there are varieties of service,
but the same Lord.
1 CORINTHIANS 12:4–5**

Key Features:

- Handbell storage to be contained within performance tables for cleanliness of appearance and accessibility.
- Handbell tables will include mobility features to allow for easy movement and storage when not in use.

CRY ROOM & WINDOW VALANCE

AS WE CONTINUE PLANNING WITH BOTH BEAUTY AND FUNCTIONALITY IN MIND, SOME THOUGHTFUL UPDATES HAVE BEEN MADE TO IMPROVE HOW OUR SANCTUARY SERVES THE NEEDS OF OUR CONGREGATION.

Upon further considerations since our last publication, it was decided to move the cry room to the west transept. This location makes better use of the Sanctuary floor space and offers better visual advantages.

Key Features:

- Cry Room to have video & audio feed for parents with small children.

It is our desire to better conceal the window shades over the stained glass windows of the Sanctuary. This could be achieved by adding wooden valances at the top of the windows that will fit into the same décor as other areas of the Sanctuary.

Key Features:

- Possibly change these window shades to be remote activated.
- New wood styled valances would fit the new décor of the Sanctuary.



AUDIO BOOTH & MEDIA PRODUCTION

TO ENHANCE BOTH IN-PERSON AND ONLINE WORSHIP EXPERIENCES, THOUGHTFUL IMPROVEMENTS ARE BEING MADE TO OUR AUDIO AND MEDIA PRODUCTION AREAS FOR GREATER ACCESSIBILITY, EFFICIENCY, AND SOUND QUALITY.

Relocation of the audio booth to the Sanctuary floor is recommended to allow the sound technician to quickly remedy audio problems and balance audio levels to maximize the sound quality.

Key Features:

- This location also provides accessibility for those mobility limitations desiring to serve as audio technicians.

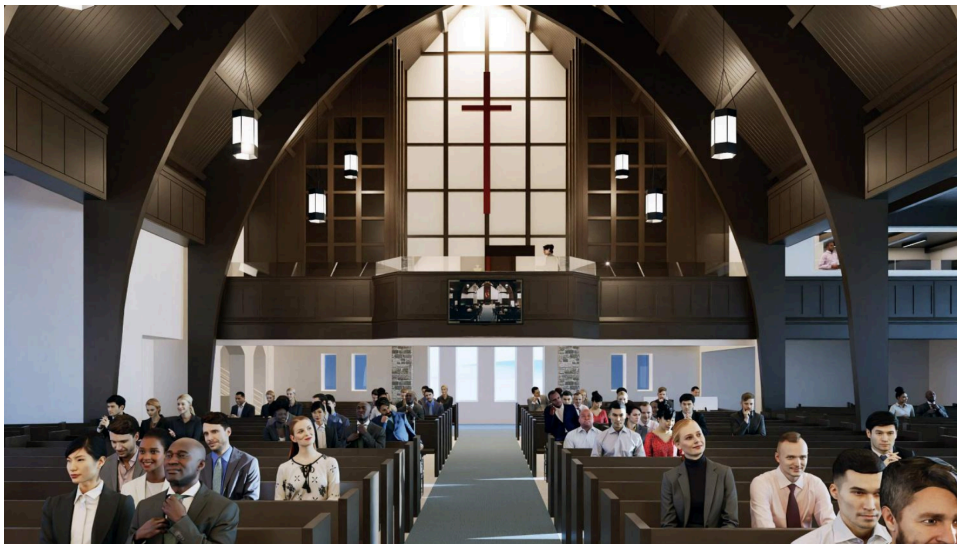
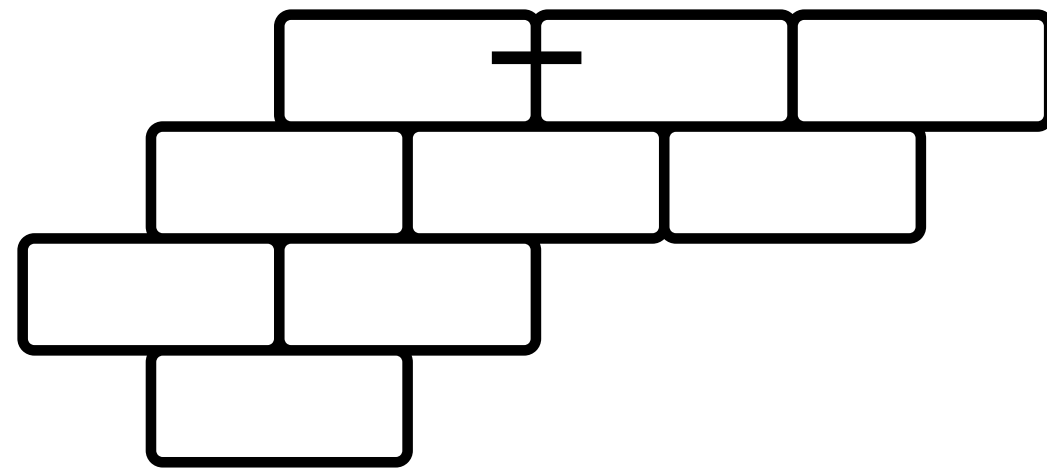
The Media Production Room functions as the main production facility for all sanctuary online video streaming technology. Modifications to the media production room would also take place in order to make that room more functional and efficient.

Key Features:

- Make room more accessible and code compliant, eliminate trip hazards.
- Make room more purposeful and efficient.
- Replace all doors, flooring and lighting.
- Add air conditioning.



CHURCH BALCONY



And I told them of the hand of my God that had been upon me for good... And they said, 'Let us rise up and build.' So they strengthened their hands for the good work.

MATTHEW 7:24

Renovations to the Balcony include items such as refurbishment and modernizing of the Organ Console, removal, cleaning and repair of its pipes, filling in of the "lower step" to eliminate trip hazards and make the floor space more usable.

Key features:

- Fill in the lower step of the balcony to eliminate trip hazards and make for more versatile maneuvering.
- Replace all flooring and lighting.

- Raise the height of the balcony handrail with glass panels to be code compliant as a result of filling in the lower step.
- Add decorative woodwork on the north wall for better online presentation of choirs.
- Existing cross to remain.

- Refurbish existing organ and pipes with modern technology components. Repair, clean and reinstall all existing pipes and repaint pipe chambers.

OTHER AREAS

**For My House shall be called a
House of Prayer for all peoples.
ISAIAH 56:7**

CHANCEL STORAGE ROOM *(No renderings available)*

Many may not be aware that there is a sizeable storage room available behind the chancel. Currently this area has limited access. It is our desire to introduce a concealed access door on the back wall of the chancel. This new concealed doorway would allow for direct access to the storage room for movement of larger worship items as needed.

Key Features:

- Concealed access doors would not be noticeable from the congregations view point.
- Easier access to seasonal and festival furnishings such Christmas trees, altar paraments, flower stands, communion kneelers, etc.

SACRISTY, CHANCEL BACK HALLWAY, AND ADJACENT RESTROOMS *(No renderings available)*

Renovations of the sacristy, the chancel back hallway and adjacent restrooms (circa 1950's) off the garden stairwell are among the oldest parts of our facility and are need of updating.

Key Features:

- Replacement of cabinetry, countertops, flooring, lighting, paint.
- Replacement of doors to the back hallway with improved security measures.
- Elimination of trip hazard in men's restroom.

MISCELLANEOUS ITEMS OF RENOVATION *(No renderings available)*

There are several less noticeable items included in the scope of the sanctuary renovations that deserve acknowledgement; however they are significant to improving the worship experience at Trinity.

- Add stonework to columns under the balcony to mimic décor of church lobby and narthex.
- Replace outdated wiring, lighting and sound system throughout the Sanctuary and balcony.
- Replace existing ceiling fans.

- Add communication digital cabling necessary to modernize the lighting and sound systems.
- Replace all flooring, lighting, and several doors.
- Add security measures to doors and hallways.

Please Note:

Items such as Sanctuary furnishings (baptismal font, lectern, altar, pulpit, handbell tables, instruments, etc.) and colors shown in these renderings (flooring, paint and woodwork stain) are for illustration purposes only, and are not intended to reflect final product and color selections.

WAYS YOU CAN HELP



FROM VISION TO REALITY

When the Sanctuary Project began in 2020, our goal was to raise over \$1 million. Through careful planning, research, and congregational conversations, our updated goal now stands at \$3.4 million. As of April 2025, we've already raised \$2,414,196.44, with an additional \$150,000 pledged. This is an incredible blessing—God has been providing through your faithful generosity as our Board of Properties continues to guide the project forward.

LOOKING AHEAD

As we move toward the planned renovations in 2026, our next step is to raise the final \$1 million over the next 18 months. Achieving this goal will allow us to complete the project debt-free. We're asking you to prayerfully consider giving an above and beyond gift to our continued "Our Father's House – Raise the Praise" campaign. Over 300 families have already contributed above and beyond, and many continue to give monthly. We are deeply grateful and hopeful that even more families will join in this faithful effort.

A SHARED MISSION

We believe God is on the move at Trinity, and that our Sanctuary remains central to how He meets His people through Word and Sacrament. It is a sacred space that supports all of our ministries, both now and in the future. Let's continue trusting in God's provision and living out the words of 2 Corinthians 9:7: *"Each one must give as he has decided in his heart, not reluctantly or under compulsion, for God loves a cheerful giver."*

LEVELS OF GIVING

| Weekly | Monthly | One-Time Yearly Gift | 18 Months |
|--------|---------|----------------------|-----------|
| \$10 | \$40 | \$500 | \$750 |
| \$20 | \$80 | \$1000 | \$1500 |
| \$50 | \$200 | \$2500 | \$3750 |
| \$100 | \$400 | \$5000 | \$7500 |
| \$500 | \$2000 | \$25,000 | \$37,500 |
| \$1000 | \$4000 | \$50,000 | \$75,000 |
| \$1500 | \$6000 | \$75,000 | \$112,500 |
| \$2000 | \$8000 | \$100,000 | \$150,000 |

- Give online at trinityutica.com/give
- Church Center app
- Send in by mail
- Stock/IRA



If you are interested in using stocks, qualified charitable distribution donor funds please contact Trinity's Finance Director Cyndi Carpenter at ccarpenter@trinityutica.com or call her at the church office.



FAITH, HOPE, AND LOVE

Over the past five years, as we've journeyed together through this project and all of our other ministries, we've done more than persevere—we've witnessed God at work, transforming lives with faith, hope, and love. He has used us to make disciples who share Christ's story with love, and we trust He will continue to do so.

To those who have supported the Sanctuary Project: thank you for your generosity, patience, and steadfastness. For those who are new—welcome to Our Father's House: Raise the Praise! God is on the move, and we believe He's not finished with us yet. The Sanctuary is not only vital to our current ministries, but is key to our future as well.

May we keep our eyes fixed on Jesus, trusting Him in every part of our lives and ministry. May we lean into His promises that bring lasting hope. And may we love one another as He first loved us.

SENIOR PASTOR JUSTIN KRUPSKY

TRINITY LUTHERAN CHURCH & SCHOOL

45160 Van Dyke Avenue
Utica, Michigan 48317
586.731.4490
www.trinityutica.com