



# RESTORATION

## ANGLICAN CHURCH

### Financial Check-In December 2025

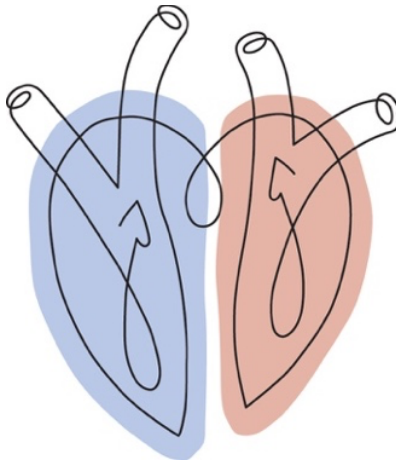
Financial partnership in the gospel is one of the central practices of grace as a follower of Christ, and it empowers us to live into our vision, values, and mission as a local church. Our aim, as disciples of Jesus living on his mission in our particular time and place, is to become people of financial generosity who reflect the abundant grace that God has shown us in Christ!

Let's remember the vision that we are pursuing with all the generosity the Lord would give us...

## **Vision: Restored Worship**

### Captivated and Compelled

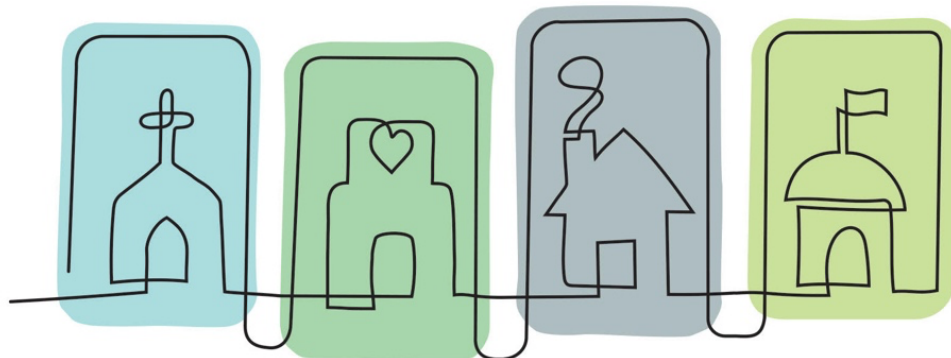
Our vision is to be a community captivated by the beauty, truth, and goodness of Jesus Christ, such that we are compelled to live for the glory of God, the good of Staunton, and the joy of the nations. This picture of restored worship is why our church exists.



## **Mission: Reconciled Relationship**

### Temple, Hospital, Household, Embassy

Our heart of worship and life of holy love moves in and out of our community along the four Mission Paths of the church as temple, hospital, household, and embassy. These paths help us stay focused on what God is calling us to do together.



## Values: Renewed Character of Holy Love

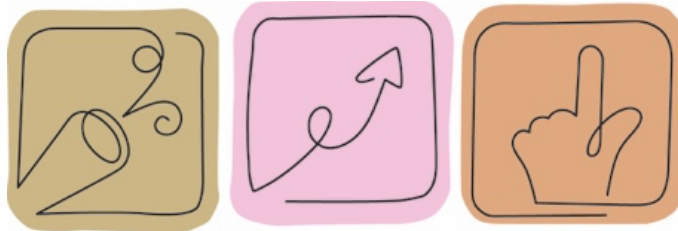
### Holy Love

We live out this vision of dynamic worship in the holy love of God as *the* defining value of our community. These ten actions of holy love are how we pursue our life together.



### Where to Find Holy Love

Pause to Pray, Choose a Place, Move Towards the Poor



### What Holy Love Looks Like

Throw a Party, Cultural Fluency and Care,  
Rise and Rise Again, Keep It Simple



### How Holy Love Responds

Assume Positive Intent, Contribute to the Cause,  
Meet Face to Face

## **How We Partner Together in the Grace of Our Finances**

### *An Invitation to Generous Stewardship*

**At Restoration, we invite the whole Body of Christ to a life of financial generosity in three ways: tithes, offerings, and alms.**

Tithe: this is the historic "10%" or "first fruits" principle. Some people may/should give more than this, some may/should give less. We recommend people aim at 10% income (after tax) giving to local church general operations, and anything more than that to special ministry initiatives in or beyond local church. At Restoration the "General Operating" fund is the place for giving to the "tithe" category.

Offering: as a part of the regular "harvest" principle. This would include regular or special ministry support, either in the local church or beyond, and is recommended 1-5% on top of regular tithing (again, keep in mind, all giving is between the giver and the Lord, these are recommendations for a vision of generous stewardship). At Restoration these are special ministry initiatives which right now are happening through the "Rector's Discretionary Fund," and in the future will be auxiliary ministries or partnership we regularly support.

Benevolence- Alms: this is based on the "gleanings" principle of harvest, where in Levitical law you did not go through your field twice and you left the edges of your field for the poor, widow, and orphan. These are additional gifts that would give us more margin if we kept them but can also bring relief to those in need. At Restoration this is our Benevolence-Alms Fund, which goes to the immediate practical needs of those who come to us asking for support (whether members or non-members).

### **Summary of Current Restoration Funds**

#### **General Operating**

Ongoing, regular needs of the life and mission of the church

#### **Rector's Discretionary**

Ministry initiatives as discerned by Rector and the pastoral staff

#### **Benevolence-Alms Fund**

Immediate practical needs of others

*For you know the grace of our Lord Jesus Christ, that though he was rich, yet for your sake he became poor, so that you by his poverty might become rich...The point is this: whoever sows sparingly will also reap sparingly, and whoever sows bountifully will also reap bountifully. Each one must give as he has decided in his heart, not reluctantly or under compulsion, for God loves a cheerful giver. And God is able to make all grace abound to you, so that having all sufficiency in all things at all times, you may abound in every good work.*

2 Corinthians 8:9; 9:6-11

## Financial Update

Report Reflective of July-June	2025-26 Actual	2025-26 Budgeted
<b>Income</b>	(5 months)	(5 months)
Local Regular Giving	57,781	61,955
Non-Local Regular Giving	12,362	8,500
Diocese	14,583	14,583
Other	16,160	33,000
<b>Total Income</b>	<b>100,886</b>	118,038
<b>Expense</b>		
Facility	\$4,303.65	6,250
Strategic Ministry Partners	\$1,403.45	4,167
Ministry and Worship	\$12,659.87	14,583
Operations	\$9,496.65	8,333
Staff	\$72,226.64	64,583
<b>Total Expense</b>	<b>100,090</b>	97,917
<b>Yearly Financial Position</b>	<b>796</b>	20,122
<b>Reserve (Strategic Ministry Growth)</b>	<b>160,587</b>	
<b>Additional Funds</b>		
Specific-Restricted	14,796	
Benevolence-Alms	4,184	2025-26 Given: \$463.21, Used: \$956.66
Rector's Discretionary	16,639	2025-26 Given: \$975, Used: \$1,588.47
<b>Total Financial Position</b>	<b>197,002</b>	

### Notes:

- God is generous with us in Christ, and we have the privilege of joyfully participating in his work in the world together through our shared lives and resources, especially our financial partnership.
- We have so many generous partners both local and abroad.
- We have a significant difference in our "local giving" and operational expenses. This matters over the next 2-3 years as "non-local giving" decreases (diocesane grant, church-planter fundraising). The metric to summarize that gap we used yesterday was adding a \$350 giving unit every month for the next two years.
- Budgeted Expenses for 2025-26 based on 2024-25 Actuals with a 20% increase for investment and growth intent.
- We are currently operating at a balanced budget, as we develop a more formal accountability structure with our Mission Council (and eventual Vestry) for financial stewardship.