

Welcome!

*Come &
See*



BETHEL
LUTHERAN CHURCH

Welcome to Bethel



A congregation centered in the Gospel, called to serve others and a place of Christian community!

God has called you into this time and place to explore how you might be a part of Bethel Lutheran Church and its vibrant ministry! Multiple worship opportunities each week center us in the good news of Jesus Christ and equip us to use our gifts and talents to serve others in the community as well as our daily life.

Bethel is a large congregation yet offers a multitude of opportunities to use your specific gifts and talents to serve within and outside the walls of our building. Christian community is the bond we hold as we care for one another in the joys and challenges of life and many of the connections made among members of the congregation happen via ministry opportunities listed in this booklet.

Our hope is that this resource will help you learn more about the congregation, invite you to continue to “come and see” all Bethel has to offer in support of your life of faith, and encourage you to consider making Bethel your church home.

May you know the abundant grace found in Christ.

Rev. Anjanette K. Bandel
Lead Pastor

What's Inside?

Who We Are	2
Bethel Staff	3
Are you New Here?	4
History of Bethel	5
Bethel's 150th Anniversary	6
Worship at Bethel	7
Education	9
Music	10
Social Missions	12
Serving at Bethel	13
Bethel Women	14
Parish Nurse Ministry	15
Bethel's Libraries	16
Children, Youth, & Family Ministry	18
Men's Ministry	22
Neighborhood Outreach Team	22

Who We Are

Mission Statement

We, the Bethel Congregation, called by God, commit ourselves to proclaim the Gospel, to prepare our members for outreach and service, and to minister to human needs.

Vision Statement

Bethel Lutheran Church will stand as a Lutheran and Christian leader in this community by being: a vibrant place of worship; a caring institution utilizing its many resources of people, facilities, and finances to serve members, the community, and interdependent expressions of the Evangelical Lutheran Church in America; a place to nurture and educate; and an interpreter and supporter of global mission.

Core Values

- Jesus is Lord of all; Christ is at the center of all Bethel's ministry and proclamation.
- Corporate worship is Bethel's highest commitment and will be expressed by sharing the faith with others throughout the week.
- God's people of Bethel are called to serve family, church, community and the world through continuous outreach and mission.
- Bethel will model a godly way of life for our members and society, including, but not limited to: a life of integrity, honesty, commitment and loyalty.
- Bethel will be good stewards of our time, talent and resources in serving members and the community.
- Bethel will nurture the entire congregation through education and building up of the family unit.
- Bethel will be a source of comfort to those who suffer, mourn or are in distress.

2022 Statistical Summary



68 Students in
Confirmation Program,
over 15 volunteers

27 Baptisms
4,337 Baptized
Members



86 Kids at VBS,
over 60 volunteers

8 Marriages



268 Children & Youth
Registered for Sunday
Morning Education

• 513 Avg. Worship
Attendance
• 304 Avg. Weekly
Livestream/Online
Worship Views



\$72,041 Raised to
support local, national,
& international missions

38 Funerals



Bethel Staff

The Bethel staff is here to serve you, in whatever capacity you may need. Please feel free to call the church office, (507) 288-6430 (or e-mail) with any comments, suggestions, or concerns you may have.

◆ Pastoral Staff

- | | | |
|--|---|--|
| ◆ Rev. Anjanette Bandel
Lead Pastor
bandel@bethellutheran.com | ◆ Rev. Lisa Hawe
Associate Pastor -
Generational Ministries
hawe@bethellutheran.com | ◆ Rev. Byron Meline
Interim Pastor - meline@bethellutheran.com |
| | | ◆ Rev. Linda Helberg
Visitation Pastor |

◆ Program Staff

- | | | |
|--|---|--|
| ◆ Julie Allhiser
Lead Director of Youth Ministry
allhiser@bethellutheran.com | ◆ Janet Hoffmann
Administrative Secretary
hoffmann@bethellutheran.com | ◆ Merle Savage
Associate Music Director
savage@bethellutheran.com |
| ◆ Cindy Bahler
Wedding Coordinator
bahler@bethellutheran.com | ◆ Sheri Kallembach
Member Coordinator
kallembach@bethellutheran.com | ◆ Kari Tollefson
Children's Ministry Assistant
tollefson@bethellutheran.com |
| ◆ Brock Besse
Minister of Music & Worship
besse@bethellutheran.com | ◆ Isabella Larson
Business Administrator
ilarson@bethellutheran.com | ◆ Jeanne Townsend
Parish Nurse
townsend@bethellutheran.com |
| ◆ Josie Bellrichard
Communications Coordinator
bellrichard@bethellutheran.com | ◆ Susan Larson
Director of Children's Ministry
slarson@bethellutheran.com | ◆ Pending at Time of Publication
Director of Youth Ministry
info@bethellutheran.com |
| ◆ Cheri Brinson
Receptionist
brinson@bethellutheran.com | ◆ Michele Nyman
Leader for The Gate of Life Worship
nyman@bethellutheran.com | |
| ◆ Rachel Hasley
Director of Communications
hasley@bethellutheran.com | ◆ Connie Post
Membership Secretary
post@bethellutheran.com | |

◆ Custodial Staff

- | | | |
|---|---|---------------------------------|
| ◆ Daniel O'Dell
Properties Supervisor
odell@bethellutheran.com | ◆ Tony Wright
Custodial Supervisor
wright@bethellutheran.com | ◆ Lori Finstad Custodian |
| | | ◆ Kevin Holz Custodian |

◆ Other Bethel Staff

- ◆ **Melissa Almer**
Hearing Interpreter
- ◆ **Jim Bahler**
Principal Organist
- ◆ **Wendy Lewis**
Weekend Receptionist
- ◆ **Michele Pretzer**
Weekend Receptionist
- ◆ **Becky Wulff**
Hearing Interpreter

◆ Church Council

- | | |
|---|---|
| ◆ Greg Heetland
Congregational President | ◆ Brett Boese
Congregational Secretary |
| ◆ Robin Kroening
Council Vice President | ◆ Mitch Anderson
Resource Board |
| ◆ Jered Longtin
Congregational Treasurer | ◆ Kelly Jones
Worship & Music Board |
| ◆ Dave Brandt
Congregational Growth
and Outreach Board | ◆ Michele Ratelle
Christian Education Board |

Are You New Here?



Come Share Life at Bethel!

Thank You For Visiting Bethel!

We pray that your time with us is enjoyable, meaningful, and spiritual.

Please feel free to participate in any activities that Bethel has to offer. You do not need to be a member to get involved, however, we would love to have you as a member of our church family. We are glad you are here!

At Bethel All Are Welcome!

If you are looking for a church home, Bethel offers New Member Orientation 101 classes the third Wednesday of every month from September to May from 6-7 pm via zoom.

Membership 201 – “What Does it Mean to be Lutheran?” sessions are offered throughout the year. These sessions will provide an opportunity to learn more about the Lutheran Church and become acquainted with Bethel’s pastors. If you have been confirmed in the Lutheran Church, it is not necessary to attend these classes; however, you are highly encouraged to do so.

For More Information

Contact Sheri Kallembach

Member Coordinator at
(507) 288-6430 or by email at
kallembach@bethellutheran.com

Visit our website at
www.bethellutheran.com/join





History of



BETHEL
LUTHERAN CHURCH

On Tuesday, May 11, 1869, seven men gathered at Norton's Hall to discuss the need for a Lutheran church in Rochester. After speaking with others in the community, they met again on June 14, and "Rochester Norwegian Evangelical Lutheran Congregation" was born. Reverend N. E. Jensen was called to hold services every three weeks at a salary of \$150–\$200 per year.

In 1870, the congregation purchased an old Baptist church and began holding services in Norwegian. A year later, members of the congregation disagreed about whether they should continue with Norwegian services. Twenty-seven members left the congregation and the reorganized church's name was changed to "The First Independent Lutheran Congregation of Rochester."

Reverend Rasmus Anderson served as pastor from 1885 until 1894 but resigned when it was decided that the younger generation needed sermons in English.

Church members who were determined to move away from Norwegian became upset again in 1915 when Reverend Johan Rodvik began to encourage young people to use the old language. Reverend Rodvik brought in members who agreed with him, and the church was again split.

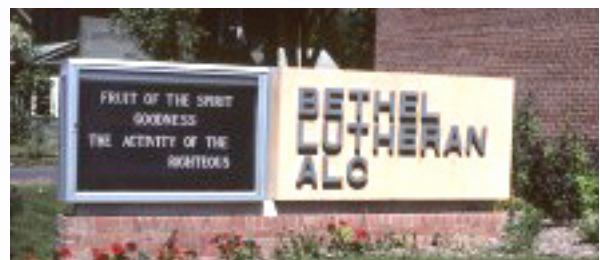
Sometime around 1918, the Sunday School became disorganized, and the congregation was struggling. The Board of Organization for the Free Lutheran Church was called on to help. On August 25, 1919, church records state that "the opposing party was ousted from the congregation." On May 31, 1920, the exclusive

use of the English language in services and meetings was adopted.

Reverend A. G. Hansen was called in 1920. Soon plans were underway to build a new church on the old site for Bethel's 35 members, and funds were solicited. The first service was held in the completed basement on Christmas Day, 1921 for 207 members. The finished brick structure opened on Christmas Day, 1924. During Reverend Hansen's 40 years at Bethel Church, membership increased from 35 members to 2,400, and Bethel became a congregation actively involved in community and world affairs.

Land was purchased at Bethel's current location in 1954 to construct a new church building. It was dedicated on July 14, 1957.

In 1963, Bethel joined the American Lutheran Church, and changed its name from Bethel English Lutheran Church to Bethel Lutheran Church. It was assumed that except for an occasional Uffda, the congregation was safe from the Norwegian language barrier.



A proposal was passed on June 11, 1978, to refurbish the Fellowship hall at a cost of \$28,000. Fortunately, work did not begin immediately because on July 5, Rochester experienced its worst flood in over 100 years.

Bethel's basement was filled with flood water and sewage as the Zumbro River raced over its banks turning Third Avenue into a rushing river.

Countless hours of work by dedicated Bethel members, donations of \$44,853, and a \$37,000 loan from the Small Business Administration resulted in a reconstructed basement—and the work of the church continued.

In 2005, the congregation dedicated a new 1,050-seat sanctuary and remodeled the old sanctuary into a main floor Fellowship Hall. This set Bethel up for a time of renewed growth in numbers and mission.

Just as Bethel in Hebrew means “house of God,” Bethel Lutheran Church has been known as the House of God since its beginning in 1869. Bethel has been blessed with many gifts and resources that are continually used to “Grow God’s House” for ministry locally, regionally, and internationally. May you join us in becoming an instrument of God here at Bethel.



Bethel's Milestones!

- **1877:** Sunday School was started.
- **1890s:** Bethel became part of the new Lutheran Free Church.
- **1895:** The name Bethel Lutheran Church was adopted.
- **1921:** The church's name was changed to Bethel English Lutheran Church.
- **1940s and beyond:** Bethel had a Sunday School, a Youth program later called the Luther League, Ladies Aid, an Altar Guild, a Men's group, and various Bible study groups.
- **1952:** Bethel called its first associate pastor.
- **Around 1975:** The first TV broadcast of a Sunday service aired.
- **1988:** The ALC, LCA, and AELC merged to form Evangelical Lutheran Church in America (ELCA). Bethel joined the ELCA.
- **1981:** Bethel purchased its first computer for word processing and record keeping.
- **1993:** Community Food Response (CFR) began using Bethel as their distribution point three days a week. CFR collects and distributes prepared but unserved food from retail establishments, schools, etc. CFR continues to partner with Bethel in this endeavor.
- **2004:** Augsburg College began using Bethel facilities for a Rochester program. The arrangement continues to this day with the newly named, Augsburg University.
- **2008:** Bethel Worship services and Adult Education classes became available on the Bethel website.
- **2009:** A new-to-Bethel Wicks pipe organ was installed and dedicated on May 17.
- **2014:** A contemporary service called Gate of Life was added at 10:10 AM on Sunday mornings.
- **2015:** A Parish Nurse Ministry was established.
- **2018:** Following four years of planning, construction of a columbarium began. It was dedicated on November 4.
- **2020:** A worldwide pandemic meant that Bethel “pivoted” to offer its first of many Drive-In Worship services with Holy Communion served to people in their vehicles. In addition, a livestream of worship, with each service later posted to the Bethel website, was instituted.



Worship at



BETHEL
LUTHERAN CHURCH

Worship is the most important thing we do!

Worship Services

Saturdays

- 6 pm with Holy Communion

Sundays

- 9 am & 10:30 am
(Holy Communion is offered the 1st & 3rd Sundays of each month)
- 10:10 am in the Chapel with Holy Communion
(Gate of Life Service)

If for different circumstances we are unable to see you in person, we invite you to join our weekly Livestream 9 am Sunday worship through our YouTube channel (www.youtube.com/user/RochBethelLutheran) or watch videos of our services (www.bethellutheran.com/worshiponline)

What to Expect In Our Worship Services

Come as you are!

Whether you're comfortable wearing jeans and a t-shirt or your Sunday best, you are welcome! You will see lots of friendly faces throughout the building. Those with name tags on are there to extend a special handshake to you. If you have questions, ask them!

During the services

You will be given a bulletin when you enter the sanctuary. Feel free to check out what's written in it. The order of worship will also be projected onto the screens. If you feel more comfortable singing the hymns and songs by looking at the music, we will be using the red hymnals located in the pew in front of you.

Sacrament of Holy Communion

During the services (except for Good Friday), Holy Communion will be served. All those baptized believing that Jesus is truly present in the bread and wine are welcome at the Table for a meal of forgiveness, life, and salvation. You need not be a member of Bethel, the Table is the

Lord's and we come at His invitation. Please follow directions from the ushers. Grape juice is available at the serving stations. All the communion bread is gluten free.

Offering

As our guests, don't feel obligated to give during the offering, but if you would like to, feel free to give through the offering plates.

Worshipping with Children

Thank you for bringing your family to worship! Each service has a "Children's Word" and you and your children are welcome to join the pastor up front at this time. During the offering, children can bring up a "noisy offering" to the front and place it in the receptacle. There are worship binders with crayons and coloring pages located outside the middle sanctuary doors. If your child needs a break, we invite you to use our Parenting Room located in the back of the Sanctuary. You will still be able to view and hear the worship from here. We also have a large nursery with a TV available to watch worship.

Please join us in Bethel Hall (exit the sanctuary to the right and follow the hallway to the left of the big staircase) from 8:45 to 10:45 am for our coffee and cookie fellowship. Also, stop by the Welcome Desk on your way out and grab a packet of information about Bethel. We would love to have you come visit again and we would be thrilled to have you join our Bethel family!

The Gate of Life is a service that will impact you musically, visually, and with the power of God's Word and Jesus' salvation as its backbone.

Expect worship to be highly engaging through the use of images, music that moves the body and soul, a message that encourages all to participate, and a community focused atmosphere with Christ at the center. When you leave worship, it is our hope that you feel a stronger connection to Christ, that you serve others in the community, and that your heart is on fire with love.

Throughout the year, we have a few special services.

- Wednesdays during Lent at 12 & 5:30 pm

- Maundy Thursday services at 12 & 6 pm
- Good Friday services at 3 & 6 pm

- Easter Eve, Saturday at 6 pm
- Easter Sunrise service, 6:30 am
- Easter Sunday Festival services, 8, 9:30, & 11 am

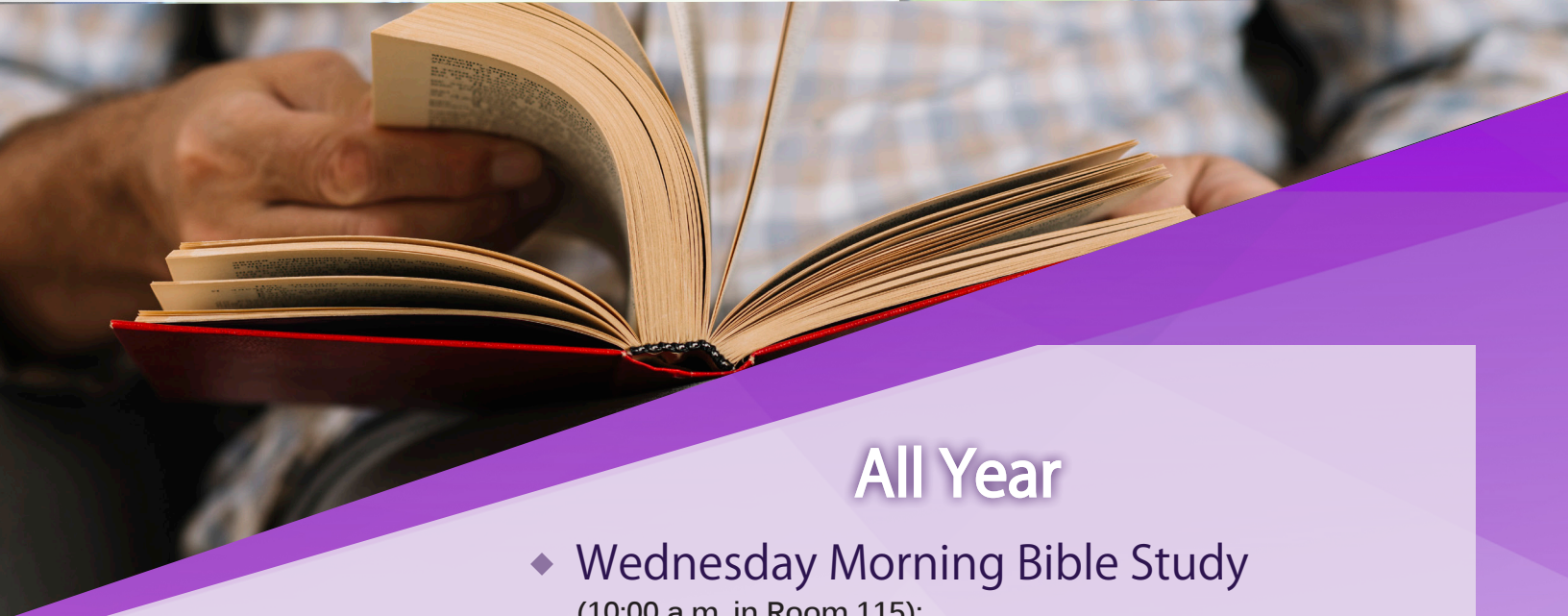
- Thanksgiving Eve service, 7 pm

- Christmas Eve services, 3, 4:30, & 6 pm
- Christmas Eve Candlelight service, 11 pm
- Christmas Day service, 10 am

A high-angle, wide shot of a large, modern courtroom. Numerous judges, dressed in traditional black and red judicial robes, are seated in a large, curved wooden bench. They are facing towards the front of the room, where a witness stand and a podium are visible. The room features light-colored wood paneling and a curved wooden floor. The lighting is bright and even.

Adult Education

God's Word is living and active and it is our delight at Bethel to present many opportunities to hear, study, teach and discuss texts from the Bible and other faith-related sources. We strive to offer several gatherings during the week with various ways of engaging in Bible study and book studies.



All Year

◆ Wednesday Morning Bible Study (10:00 a.m. in Room 115):

Discussion takes place centered on the Scriptures that will be used in the upcoming weekend worship services.

◆ Wednesday Evening Bible Study (6:40 p.m. in Room 115):

These series studies of varying length engage us in both Old and New Testament books as well as the Lutheran Confessions.

September - March

◆ Sunday Morning Education Forum (10:30 a.m. in room 115):

A variety of speakers, many from outside the congregation, teach and lead discussions on Lutheran Theology, Lutheran Church History, Social Issues and Health and Wellness topics. See the Adult Education brochure for a complete 2023-24 schedule of topics and presenters.



Music

Sign up to join the music ensembles at www.bethellutheran.com/music-ministry-form or by contacting the directors.

- 1. Bethel Brass:** Open to high school students through adults. **This ensemble rehearses each Wednesday from 5:45 pm to 6:30 pm in the sanctuary** and presents musical offerings and hymn accompaniments at least once a month throughout the church year. Trumpets, horns, trombones, baritones & tubas are encouraged to participate. If interested in this ensemble, please fill out the online form and contact Merle Savage at savage@bethellutheran.com.
- 2. Bethel Ensemble:** Bethel Ensemble: Open to high-school students through adults. **This ensemble meets each Wednesday from 6:30 pm to 7:30 pm in the sanctuary** and presents musical offerings and hymn accompaniments at least once a month throughout the church year. All abilities and instruments are welcome and encouraged to attend. Bethel Lutheran Church is also blessed with a few loaner instruments, so if you played in Junior/Senior high and don't have your instrument anymore, you are welcome to borrow one of ours. If interested in this ensemble, please fill out the online form or contact Brock Besse at (507) 288-6430 or besse@bethellutheran.com.
- 3. Bethel Ringers:** For high-school students through adults. **Rehearsals are each Thursday from 7:00 pm to 7:45 pm in the sanctuary.** This ensemble presents their musical offerings once a month at both the 9 am and 10:30 am worship services. It is not a requirement to read music to play in this ensemble and all are encouraged to participate. If interested in this ensemble, please fill out the online form or contact Gary Thorn at gthorn@charter.net.
- 4. Chapel Ringers:** For advanced ringers. **Rehearsals are each Thursday from 7:45 pm to 8:30 pm in the sanctuary.** This ensemble presents their musical offerings once a month at both the 9 am and 10:30 am worship services. Members of this group are musicians wishing to play more challenging music in a smaller ensemble setting. If interested in this ensemble, please fill out the online form or contact Gary Thorn at gthorn@charter.net.
- 5. Blessings:** Open to all soprano and alto vocalists from high school to adult based on balance needed in the ensemble. This treble choir proclaims the Word of the Lord at least once a month, and **rehearses every Thursday from 5:45 pm to 6:15 pm in the chapel.** If interested in this ensemble, please fill out the online form or contact Terri Wehrman at (507) 358-6519 or thewehrman@gmail.com.
- 6. Cantori:** Open to high school students through adults based on need for each section. This balanced ensemble was newly formed in 2018 and requires the same number of singers in each section, focusing on more advanced choral pieces in a chamber setting. **Rehearsals are each Thursday from 6:15 pm – 7:00 pm in the chapel** beginning in October. If you have an interest in this ensemble and wish to see if there is an opening in any given section, please contact Brock Besse at (507) 288-6430 or besse@bethellutheran.com.
- 7. Chancel Choir:** For high-school students through adults. **This ensemble meets each Wednesday from 7:30 pm to 9:00 pm in the sanctuary.** Lifting up the Word of God through song is our calling, and we do this through many different styles of music. This ensemble offers their gift of music at both the 9 a.m. and 10:30 a.m. worship services regularly throughout the church year. If interested in this choir, please fill out the online form or contact Brock Besse at (507) 288-6430 or besse@bethellutheran.com.



8. Cherub Choir: For youth ages 3 through 1st graders. This ensemble is a fun and educational way for children to learn music basics by singing, playing rhythm instruments and beginning choreography. **Rehearsals are each Wednesday from 6 pm to 6:30 pm in room 100.** Selections are presented to the congregation at various times throughout the church year. If interested in this ensemble, please fill out the online form or contact Brock Besse at (507) 288-6430.

9. Choristers Choir: For youth in grades 2 through 6. This ensemble teaches youth to sing in unison and two parts. **Rehearsals are each Wednesday from 6 pm to 6:30 pm in the Chapel.** Selections are offered to the congregation once each month from October through May. If interested in this choir, please fill out the online form or contact Terri Wehrman at (507) 358-6519 or thewehrman@gmail.com.

10. Sing for Joy: Open to all tenor, baritone & bass vocalists from high school to adult based on balance needed in the ensemble. This ensemble shares the Good News with the congregation at least once a month, and **rehearses every Thursday from 5:15 pm to 5:45 pm in the chapel.** If interested in this ensemble, please fill out the online form or contact Brock Besse at (507) 288-6430 or besse@bethellutheran.com.

11. Gate of Life Worship Team: For high-school students through adults. This ensemble of vocalists and instrumentalists leads worship at 10:10 am in the Chapel each Sunday and **rehearses prior to the beginning of the service in the chapel.** Aspiring musicians are encouraged to fill out the online form or contact Michele Nyman at nyman@bethellutheran.com.

12. Solos, Duets, Trios, Quartets and Small Ensembles: There is always a need for musical offerings throughout the church year and people of all ages and skill levels are encouraged to share the Word of God through song at any time. Music is an amazing way to celebrate scripture and enhance any worship service! **If you are interested in providing vocal, instrumental or ensemble selections for the people of Bethel Lutheran Church at a worship service, please reach out** to our Minister of Music and Worship, Brock Besse at (507) 288-6430 or besse@bethellutheran.com.

Childcare may be provided if it would help adults be able to participate in any of the above groups. This is a question at the end of the online form. We would love to be all inclusive and provide opportunities for all our members to participate, making it as easy as possible so please feel free to sign up and check the childcare box if this would help secure your participation.





Social Missions

Mission Statement

The Social Missions Team is committed to guiding and promoting Bethel's response to people locally, nationally, and globally, and ministering to their needs for spiritual growth, sustenance, housing, health care, education and social services.

This team offers opportunities to participate in Bethel's stewardship of a wide range of outreach mission funding and work.

Hunger

We are active with Channel One, Community Food Response, and Meals on Wheels locally, and ELCA Hunger Appeal, Bread for the World, and ELCA Good Gifts globally.

Housing

Bethel supports Habitat for Humanity, Interfaith Hospitality Network that cares for homeless families the Dorothy Day House homeless shelter, and the Women's shelter.

Foreign Missions

Bethel partners with the ELCT in Tanzania and their work in medical dispensaries. We support ELCA medical missionaries in Tanzania and emergency need through Lutheran World Relief. We also have a partnership with an ELCA congregation in Puerto Rico.

Domestic Missions

Bethel has a work team that travels to southern states who have encountered flooding or tornado damage. Bethel has a commitment to support Rochester service organizations throughout the year and sponsors a Rochester Mission Trip each August.

Health

Concerns are addressed by providing funds to equip medical facilities in Tanzania and through partnership with Global Health Ministries in providing reconditioned medical and dental equipment and training for personnel in many poor countries.

Much, much, more!

A very important responsibility of the Social Missions Team is receiving and assessing requests for funding and/or joint activity submitted by other churches and organizations and providing guidance in development of Bethel's benevolence budget.

We welcome new members. We meet at 6:30 pm on the first Tuesday of each month. To learn more, contact our Associate Pastor – Visitation, Mission and Teaching Ministry at info@bethellutheran.com

Serving at *Bethel*

Bethel has many opportunities for individuals to become involved by utilizing their spiritual gifts. To learn more about volunteering for one of Bethel's teams or ministries, contact Sheri Kallembach, Member Coordinator at (507) 288-6430 or kallembach@bethellutheran.com

Artistic/Handiwork

- Banners
- Bethel Grounds & Beautification Team
- Decorate Church (See also Liturgical Arts)
- Friendly Quilters
- Prayer Shawl Ministry

Bethel Teams

- Adult Education Team
- Children's Ministry Team
- Columbarium Team
- Communications Team
- Devotional Team
- Drama Team
- Endowment Team
- Fellowship Team
- Finance Team
- Health Cabinet Team
- Personnel Team
- Properties Team
- Social Missions Team
- Stewardship Team
- Worship & Music Team
- Young in Spirit Board
- Youth Ministry Team

Bethel Women of the ELCA

- See Bethel Women page

Children/Youth & Family

- Confirmation Mentor
- Confirmation Small Group Leader (grades 7-8)
- Forum 56 Leader on Sundays (grades 5-6)
- High School Ministry (grades 9-12)
- Middle School Ministry (grades 6-8)
- Sunday School Volunteer
- Vacation Bible School
- Serve on a CYF Team

Communications/Technology

- Devotion Writing
- Worship Filming Technician
- Worship PowerPoint Operator
- Worship PowerPoint Prep Assistant
- Worship Sound Technician

Community Concern

- Family Promise Rochester
- Meals on Wheels
- Neighborhood Outreach
- Women's Shelter

Education - See Education page

Music - See Music page

Older Adults

- Young in Spirit Fellowship (age 55+)

Service Ministries Within Bethel

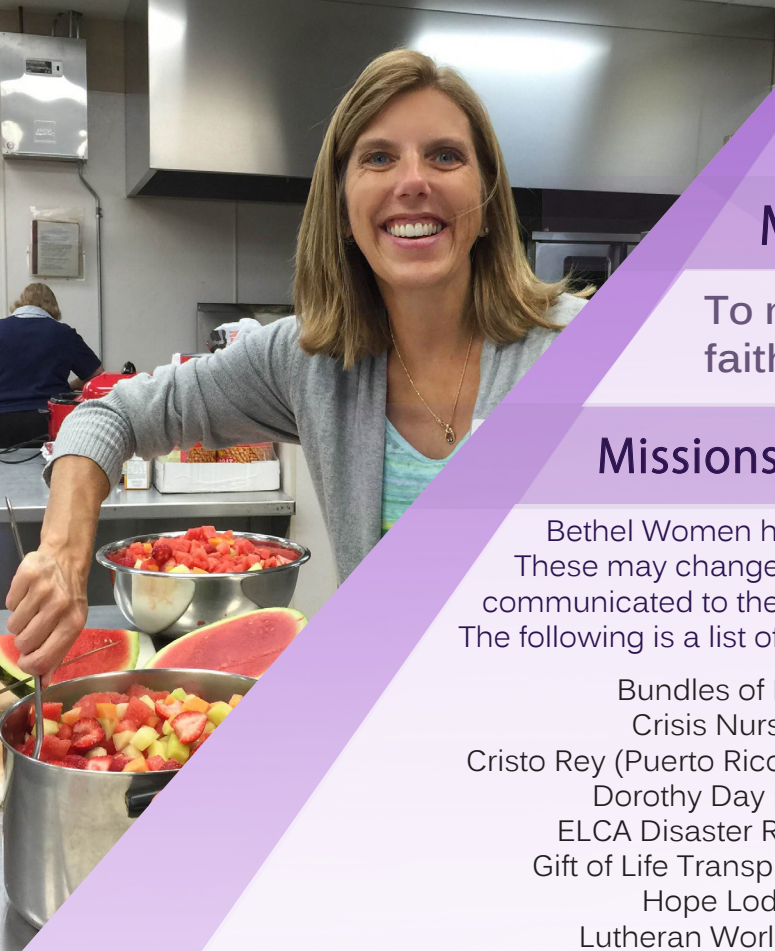
- Assist with Mailings
- Coffee & A Prayer
- Coffee & Treats/Food Items
- Drive Sunday Van
- Library Assistant on Sundays
- Nursery - Help with Special Events
- Nursery - Help on Sundays
- Office Volunteer
- Parish Nurse Ministry
- Phone Calling
- Prayer Chain
- Read Bible Stories to Children
- Visually Impaired & Blind Ministry

Small Groups

- Bethel Book Club
- Library Team

Worship Services

- Altar Guild
- Communion Bread Bakers
- Communion Prep & Cleanup
- Communion Server
- Greeter
- Lector (Reading scripture lessons in worship)
- Liturgical Arts
- Usher



Bethel Women

Mission Statement

To mobilize women to act boldly in their faith in Jesus Christ.

Missions Supported by the Women of Bethel

Bethel Women highlight a different charity or mission project every month. These may change from year to year. Information about each project is communicated to the congregation and all are encouraged to participate. The following is a list of some of these missions:

Bundles of Love
Crisis Nursery
Cristo Rey (Puerto Rico Sister Church)
Dorothy Day House
ELCA Disaster Response
Gift of Life Transplant House
Hope Lodge
Lutheran World Relief
Maria Sandvik Center

MN Adult/Teen Challenge
Neighborhood Outreach
Next Chapter Ministry
PET International
Safe Harbor
Salvation Army
Sharing & Caring Hands
The Landing
Women's Shelter

Bethel's congregation is generous in their support of our mission programs. Their support and our fund-raising enables us to give thousands of dollars at year's end to missions locally, nationally, and internationally.

Bethel Women Activities

Bible study groups meet monthly, some use the Gather Magazine for the bible study.

Leah Circle

Meets 2nd Tuesday of the month at 4:30 pm in room 115 at Bethel.
Contact: Mary Hunt: (507) 421-8801

Lydia Circle

Meets 3rd Monday of the month, 1 pm at Bethel.
Contact: Co-Chairs, Carol Lambert, (507) 282-8897, or Sharon Oliver, (507) 288-5828

Ruth Circle

Meets 3rd Tuesday of the month, 7 pm at member's homes.
Contact: Janet Scheid, (H) (507) 285-9309, (C) (507) 316-1506

Sabbath Women

Meet the 2nd Saturday of the month at 9 am in room 115 at Bethel from September thru May.
Contact: Art Larson: (507) 288-7322

Sarah Circle

Meets 4th Tuesday of the month, 6:30 pm at member's homes or at Bethel.
Contact: Co-chairs, Alice Ryba, (507) 208-2120, or Christine Kolling, (507) 282-5358

The Friendly Quilters

Meet on Tuesday mornings at Bethel, 8 am to 12 pm in the lower level.
All are welcome to come!

We serve Sunday morning coffee and serve at funerals. We hold two gigantic rummage sales in the spring and the fall.

Our mission of the month supplies paper products and other items to various charities. During the year we have a No-Bake/No-Craft sale and a Spring Coffee featuring a speaker or musical entertainment.



Parish Nurse *Ministry*

The church has a role in the ministry of health and healing which began when Jesus sent out His disciples to preach, teach, and heal. Parish Nursing promotes wellness of body, mind, and spirit to all members of Bethel Lutheran Church and the community. The parish nurse integrates the concept of holistic care into his/her nursing care and ministry, stressing health maintenance and illness prevention.

The parish nurse will provide leadership in identifying and meeting the health education and support needs of all members of Bethel Lutheran Church. The parish nurse requires the ongoing support from the congregation, Health Cabinet, and clergy.



What is a Parish Nurse?

Integrator of Faith and Health

Assists parishioners to achieve higher levels of wellness by improving their spiritual and physical health.

Health Educator

Provides opportunities for the congregation to learn about health issues, individually and in groups.

Referral Advisor

- Works with community resources to establish networks that assist with the well-being of the congregation.
- Makes referrals to community groups as needed.

Health Advocate

Helps members of the congregation obtain needed health related services and assists in navigating the healthcare system.

Health Counselor

Available to discuss health concerns, giving clarity and support.

Developer of Support Groups

Facilitates the development of support groups for the congregation as needed.

Volunteer Coordinator

Recruits, prepares, and oversees congregational volunteers to assist with the ministry of health and wholeness.

Bethel's Parish Nurse

Contact our Parish Nurse Jeanne Townsend at (507) 288-6430 or townsend@bethellutheran.com for:

- Questions about your health concerns
- Assistance navigating the healthcare system
- Assistance in accessing community resources
- Support during times of need
- Requests for education on health-related topics
- Volunteer opportunities



Current Wellness Activities at Bethel

(subject to change)



Monthly Blood Pressure Screening

One Sunday each month in the Church
Office Conference room

Health and Wellness Articles

Found at bethellutheran.com/parish-nurse-ministry

Senior Exercise Class and Arthritis Foundation Exercise Program

Held weekday mornings in the Narthex

Health and Wellness Education

Check the Bethel e-news for upcoming
presentations

Bethel Health Fair

An opportunity to learn more about health and
wellness through a variety of experts

Flu Shots

Offered in the fall in collaboration with Hy-Vee

Blood Donations

Watch the e-news for information about
upcoming blood donation drives and challenges

Aging Eyes Initiative

Tools and resources for those experiencing
vision loss

Grief Discussion/Support Group

Offered 3-4 times throughout the year

Summer Activity Groups

Groups for those interested in walking,
bicycling, hiking, and yoga

And More!

Bethel's Libraries

Mission Statement

The mission of the Bethel Library is to provide
resources to educate, inspire and nurture the growing faith of the Bethel family.

Adult Library

Fiction: The fiction collection features many popular Christian authors and are arranged
alphabetically by the author's last name. A red binder contains a list of the series books by author.

Non-fiction: Non-fiction books are arranged by subject and include: Aging, Bibles, Care Giving,
Contemporary Topics, Death, Finance, Grandparenting, Humor, Marriage, Prayer, Theology,
Autobiographies, Biographies, Christian Living, Cookbooks, Family Life, Grief, Health, Luther, Music
and Worship, Simplicity, and World Religious.





More Than Books...

- CDs and DVDs on topics relevant to adults
- Minutes from the Church Council meetings
- WELCA "Gather" magazine
- Boxed puzzles to check out
- Maintain a "Little Lending Library" on church grounds

Children's Library

The Children's Library hosts a variety of Bible stories, value based lessons and prayer books to introduce children of all ages to life as a Christian.

- Infant and toddler board books and Bibles
- Everybody picture books
- Young reader books
- Intermediate reader fiction and non-fiction
- CDs with seasonal music and songs especially for children
- DVDs with a Christian focus
- Games that are Bible-based

Parenting books offer support and encouragement from a Christian perspective and Family Life stories help families address the challenging topics of life.

Bethel Book Club

Monthly meetings are held in the Adult Library the third Tuesday evening of each month. Frequently the book selection is from the Rochester Public Library's Book-In-A Bag offerings for adults. Participants may check out and return the book to the Bethel Library.

Checkout Procedure

Books may be checked out for one month. CDs and DVDs are checked out for two weeks.

- Write your first and last name and date you check out the item on the card found in the pocket at the back of the book or other media.
- Place completed card in holder at the check-out counter.
- Return materials to the basket on the counter.

Donations

Donations are welcome. The Library Team will review donations of new or used items to determine if they are appropriate for the Bethel collection. If it cannot be used on our shelves, the item will be sold at the Spring/Fall book sale.

Monetary contributions are a wonderful way to memorialize or honor a loved one. The gift will be acknowledged on a book plate within books purchased through the contribution.

Hours of Operations

The self-serve libraries are open almost all times when the church is open. A library assistant is available on Sunday mornings from 10 – 10:30 am to help you find materials.

Library Team

The library operates through Bethel volunteers. The team meets monthly, maintains the current collection, and reads to Sunday School classes. Contact Sue Thalacker at s_thalacker@hotmail.com for more information. New team members are always welcome!

Children, Youth, & Family Ministry

Bethel's CYF Staff

Julie Allhiser - Lead Director of Youth Ministry
allhiser@bethellutheran.com

Susan Larson - Director of Children's Ministry
slarson@bethellutheran.com

Kari Tollefson - Children's Ministry Assistant
tollefson@bethellutheran.com

Director of Youth Ministry
(Pending at time of publication)
info@bethellutheran.com



Our CYF Ministry area will empower the Children, Youth and the Families of Bethel to:

- **Engage, Learn, and Be Rooted in God's Word** through the Scriptures, Small Catechism, and Lutheran Tradition at church and in our homes.
- **Build Healthy Relationships** with each other and across the generations of our families and congregation.
- Celebrate opportunities to **Worship, Pray, Serve, Have Fun and Share the Gospel** with our neighbors near and far.

Bethel CYF Ministry serves children and youth ages three to college-age through a variety of vital ministries, each tailored to connect with God's children where they are at.

Sunday Morning Education is available for three year olds through 12th graders. For each age group there are special events throughout the year and each grade has a milestone or special event. Middle School students participate in Confirmation starting at the end of 6th grade. High School students are confirmed in 10th grade and have a variety of fun, learning, service and leadership opportunities. The following CYF groups are offered:



Sunday School

Sundays, 9 & 10:30 am
Ages 3 through 4th grade

Children age 3 through 4th grade attend Sunday School. They have age level classes, sometimes 2 grades are combined. We have Gathering Time as a large group every other week. Volunteers teach age appropriate Bible lessons and share God's love with the children.

Forum 56

**Sunday 9 & 10:30 am
5th-6th Grade**

Students gather in Youth Hall for Sunday School. This program introduces our youth to the large group/small group classroom style as volunteers teach the weekly lesson through skits and activities. We participate in Gathering Time and music with all of the grades every other week!



Confirmation Ministry

7th and 8th grade youth attend weekly classes taught by our Pastors from September to May. Each week they break into small groups for Bible study, discussion, and activities. 9th grade youth participate in a year-long mentorship with an adult where they meet monthly to discuss how they are living out their faith. 10th grade youth are confirmed at the Affirmation of Baptism Service on Reformation Sunday in the Fall.

ELEVATE

**Wednesdays 7:00 - 8:00 pm
9th-12th Grade**

High School Youth join us Wednesday nights for our Youth Group style Bible Study in Youth Hall. We discover and live out God's promises through Bible Study, games, leading dramas & music for confirmation, service projects, and field trips. College Care Packages are packed by the students and mailed twice a year.



Anchored

**Sunday 9 & 10:30 am
7th-8th Grade | 9th-12th Grade**

Youth gather for a small group style Sunday School. They enjoy snacks and relax as they discuss how that week's scripture applies to

a teen's life. They also participate in service projects throughout the year.



Milestone Ministries & Special Events

During the school year, CYF Ministry celebrates a special event or milestone for every grade:

- **PreK3 (Age 3):** Orientation and Bible Bag Milestone
- **PreK4 (Age 4):** Bible Milestone
- **Kindergarten (Age 5):** Someone Special Day
- **1st Grade:** Bible BINGO
- **2nd Grade:** Joy of Giving Stewardship Special Event
- **3rd Grade:** Bible Milestone
- **4th Grade:** Easter Event
- **5th Grade:** 1st Communion
- **6th Grade:** Confirmation Orientation and Kick-Off
- **7th & 8th Grade:** Confirmation Parent Nights (Held Twice a Year)
- **7th & 8th Grade (Fall of Next Year):** Attend Confirmation Camp at Good Earth Village
- **9th Grade:** Mentorship Year
- **10th Grade:** Affirmation of Baptism (Confirmation) Service
- **11th Grade:** Junior Special Event
- **12th Grade:** Senior Milestone Celebration



FAITH

The CYF team also uses and encourages families to use FAITH5:

When modeled every week at church and practiced every night at home, FAITH5 carries the power to enrich communication, deepen understanding, and promote mental, and spiritual health. The five steps are:



Share highs and lows. Name something good and bad you experienced today.

Can't think of a personal one?

Check out the headlines from the news and teach empathy and compassion for the broader world.



Pray for one another's highs and lows, for your family, and for the world.

Simply talk to God, thank Jesus for the good, and ask the Holy Spirit for guidance in specific problems.



Read a verse from your Bible.



Bless one another. Trace the sign of the cross on another's forehead or palm as a reminder that you belong to God and to one another. Say something like "You are a child of God," or "Jesus loves you and so do I."



Talk about how the verse relates to the highs and lows. Unpack the verse a bit. What does it mean in your own words?

How might it relate to where you are today in your highs and lows?

© Faith Inkubators, All Rights Reserved,
www.faithink.com



Men's Ministry

Bethel's Men's Ministry concentrates on three areas:

- Bible study and prayer;
- Service projects;
- Fellowship.

Each month of the school year (September – May) we participate together in a simple Bible study for which no preparation is necessary. We seek to provide men a comfortable setting in which to have faith-centered conversations with other men.

Service projects, whether close to home or miles away, are ways to use our God-given gifts to lend a helping hand to those who are going through a difficult time. Locally, we may assist people with household chores and repairs. We may provide a caring adult presence for youth who need that sort of support and encouragement. Past service projects have taken us to states half-way across the country. For example, we have worked with organizations such as Lutheran Disaster Relief to help people whose homes have been damaged by natural disasters.

Whether studying, working, or just relaxing together, fellowship is a part of every event that the Men's Ministry sponsors. We enjoy some good laughs together as we serve a church meal or bring our families for a summer cookout. There is much value in these get togethers that help us to get to know each other better as members of the Body of Christ.

For more information about the Men's Ministry, contact our Associate Pastor – Visitation, Mission and Teaching at (507) 288-6430 or info@bethellutheran.com

Neighborhood Outreach Team

The Neighborhood Outreach Team is a unique and robust team that thrives on collaborative relationships within our congregation and community to provide outreach, support and resources to our neighborhood partners in schools, non-profit programs, agencies, and to individuals as needed. We prioritize opportunities within our immediate neighborhood for those individuals, families, or agencies with at-risk needs. We receive our generous support through team requests, focused mission drives, and congregation donations.

Our team provides food boxes or gift cards for at-risk families at our neighborhood schools over extended school breaks, as well as collecting winter-wear clothing, food, hygiene, and select items for school resource rooms. Those who are financially or housing insecure, or impacted by the cycle of incarceration are another area of support for our team as we provide food, personal items and monetary/laundry donations. We host a fun evening with 'Night to Unite' (formerly National Night Out) for our congregation and neighborhood, in collaboration with other Bethel teams, to encourage fellowship, ensure a safe neighborhood and collect school supplies for our neighborhood schools. Our team also has a 'Loads of Love' mission that provides laundry supplies at a local laundromat to ease the costs of laundry for families and newer opportunities at The Landing and LSS Youth Services programs are part of our ongoing missions as well.

Monthly meetings [1 hour] occur the 2nd Tuesday of the month in the Parenting Room. Volunteer opportunities are available for missions/service throughout the month as members feel called to participate. Training provided for specific missions as needed.

Contact: Kori Petersson, Chair, (507) 251-2662, korilynp@gmail.com



BETHEL LUTHERAN CHURCH



810 Third Ave SE
Rochester, MN 55904
(507) 288-6430 | info@bethellutheran.com
www.bethellutheran.com

Subscribe to our occasional text messages about important news, events, or cancellations by texting **"Subscribe"** to our church number!

