

Wisdomland - God can help you make the wise choice



DAY 1

Read Psalm 23:1-2

"The LORD is my shepherd. He gives me everything I need. He lets me lie down in green pastures. He leads me beside quiet waters." (NIRV).

David, who would become a great king, started as a shepherd. He spent a lot of time out in nature, watching over his sheep. He knew that good shepherds always led their sheep to green grass and calm water. They protected their sheep and made sure they had everything they needed. David learned that God is like the best shepherd ever! God knows exactly what we need and where to lead us. When we follow God, we're like sheep following a wise shepherd to the best, greenest pastures. That's a super smart choice!

~~~~~

Draw a picture of a peaceful place, like a green pasture or a quiet stream. Then write out Psalm 23:1-2 on it, hang it up somewhere you can see!

### DAY 2

#### Read Psalm 8:1

*"LORD, our Lord, how majestic is your name in the whole earth! You have set your glory in the heavens." (NIRV).*

Have you ever seen someone famous in real life? Maybe a performer, or a sports star? David became super famous after he defeated the giant Goliath! King Saul was so impressed that he invited David to play music and even lead his army. Imagine going from a quiet shepherd to being in the spotlight!

Even with all that attention, David remembered who was really in charge, God! He wrote songs, called psalms, that reminded everyone how amazing God is. He knew that its is way better to honor God than just be powerful or famous. When we focus on how majestic and wonderful God is, it helps us make wise choices, no matter if we're feeling small or if everyone is watching us.

~~~~~

Circle the words above in Psalm 8:1 that show how amazing God is!



THIS MONTH'S MEMORY VERSE:

"It is much better to get wisdom than gold.
It is much better to choose understanding than silver."

Proverbs 16:16 NIRV

DAY 3

Read Psalm 18:2

"The LORD is my rock and my place of safety. He is the God who saves me. My God is my rock. I go to him for safety. He is like a shield to me. He's the power that saves me. He's my place of safety."(NIRV)

Think about a super thrilling roller coaster! Sometimes, you go through dark tunnels or twisty turns, and it can feel a little scary. You might not know what's coming next. David faced times like that too! Even after becoming a hero, King Saul got jealous and tried to hurt him. David had to live on the run, hiding in the wilderness. It was a scary and dark time.

But David didn't give up on God. He trusted God to protect him, like a strong fortress or a safe rock. When you're going through a tough or dark time, remember that God is always with you. He's your rock, your shield, your safe place. Choosing to trust God, even when things are hard, is a super wise choice!

Grab a paper plate and draw a picture of a "rock" or a "fortress" on it. Under that write "God is my safe place!" Hang it up to remind you that God is always there.

**If you want to be wise,
focus on God.**

DAY 4

Read Psalm 1:1-3

"Blessed is the person who obeys the law of the Lord. They don't follow the advice of evil people. They don't make a habit of doing what sinners do. They don't join those who make fun of the Lord and his law. Instead, the law of the Lord gives them joy. They think about his law day and night. That kind of person is like a tree that is planted near a stream of water. It always bears its fruit at the right time. Its leaves don't dry up. Everything godly people do turns out well." (NIRV)

Imagine a strong, tall tree with deep roots that keep it standing firm, no matter the weather! That's what Psalm 1 says about people who follow God's ways—they're like trees planted by streams, always fresh and strong. How can we be like those trees?

Spend time with wise people: You become like the friends you hang out with. Being around those who love God helps you grow in wisdom.

Focus on God's Word: The Bible is like water for the tree's roots. When we read it, listen to it, and think about it, we grow stronger and learn how to follow God.

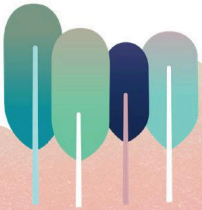
Pray today asking God to help you grow in wisdom! "Dear God, Thank You for giving us Your Word, the Bible, to help us grow in wisdom. Help us to spend time with people who love You and to focus on Your Word every day. Please show us how to make wise choices that honor You. I love You, Amen."

BONUS VERSE:

**"The Lord is my shepherd, I lack nothing.
He makes me lie down in green pastures,
He leads me beside quiet waters."**

Psalm 23:1-2 NIV

Wisdomland - God can help you make the wise choice.



This Week's Bible Story Video



Talk About the Bible Story

Open the Bible together and read Psalm 1:1-4 or watch the video together on the Parent Cue app.

Engagement Questions

- Do you know what wisdom is?
- What is one good thing you learned about God this week?
- Can you remember a time when you made a wise choice? What happened?

Faith and Character Activity

Scan the QR code below for activities to guide kids at every phase to trust Jesus in a way that changes how they see God, themselves, and the rest of the world.

Scan the QR code
to get started



Prayer

"Dear God, there are a lot of things we could focus on. Today, we choose to focus on you. We love you so much. We pray these things in Jesus' name. Amen."

Weekly Parent Cues



Elementary

ENGAGE IN EVERYDAY MOMENTS TOGETHER



Morning Time

As your kid starts their day, encourage them by sharing a time you saw them use wisdom.



Meal Time

At a meal this week, have everyone at the table answer this question: "How do we get wisdom from God?" (pray, the Bible, other Jesus followers)



Drive Time

While on the go, ask your kid: "When you have to make a choice, is it hard or easy to focus on making a decision?"



Bed Time

Pray for each other: "God, we want to live our lives honoring You. May we focus on You and Your wisdom when faced with decisions."

More Ways to Engage with Your Kid

Faith & Character Activities



Worship Song of the Month



Download the Parent Cue app

AVAILABLE FOR APPLE
AND ANDROID DEVICES

