

# WHITE MEMORIAL

## PRESBYTERIAN CHURCH

SERVICE FOR THE  
FIRST SUNDAY IN LENT

February 18, 2024  
9:30 & 11:00 a.m.

### WE GATHER TO WORSHIP

*\* Please rise in body or spirit.*

#### Greeting

Karl Zinsmeister

*One: The peace of our Lord Jesus Christ be with you all.*

**All: And also with you.**

*One: Let us prepare for worship.*

#### Preparation for Worship

*O Lord God, you led your people through the wilderness and brought them to the promised land. So guide us, that, following our Savior, we may walk through the wilderness of this world toward the glory of the world to come; through your Son, Jesus Christ our Lord, who lives and reigns with you and the Holy Spirit, one God, now and forever. Amen.*

#### Prelude – As the Deer (see Hymn 626)

M. Nystrom, arr. J. Carter, ed. J. Holstein

#### Christian Welcome and Announcements

Lee Hunter

Please pass the Friendship Register to your neighbor and include all requested information.

#### Minute for Artist in Residence

Steve Prince

#### Call to Worship

*One: As Lent begins, we are called to journey.*

**All: To journey with Christ. To journey within ourselves.**

*One: God is with us on our journey, ever calling us to repentance and faithfulness.*

**All: May God bless us when we are lost in the wilderness. May God bless us when we are yearning for hope. May God bless us as we lay our hearts and lives at the feet of Christ.**

*One: Let us confess our sin, affirm our faith, and sing our songs of praise. Let us worship the God of grace.*

#### \*Hymn 159 – O Sing a Song of Bethlehem

KINGSFOLD

#### \*Call to Confession

#### \*Prayer of Confession

*One: Why are we called to confess our sin?*

**All: Because all people fall into sin and fall short of the kingdom of God.**

*One: Why do we pray our confession together?*

**All: Because we are a covenant people, bound together in faith and love.**

*One: Let us pray:*

**All: Most merciful God, we confess our sin through thought, word, and deed. We have left too many things undone. We have allowed the right things fall away and too frequently embraced the wrong ones. We have loved greed and power too much, and sacrifice and humility too little. We have been distracted and pulled away from your saving and forgiving word. Help us to find our footing as we journey within and journey with you. Forgive us, bless us, and renew us. In the name of Jesus, we pray. Amen.**

#### \*Assurance of Pardon

#### \*Passing of the Peace

*One: The peace of our Lord Jesus Christ be with you.*

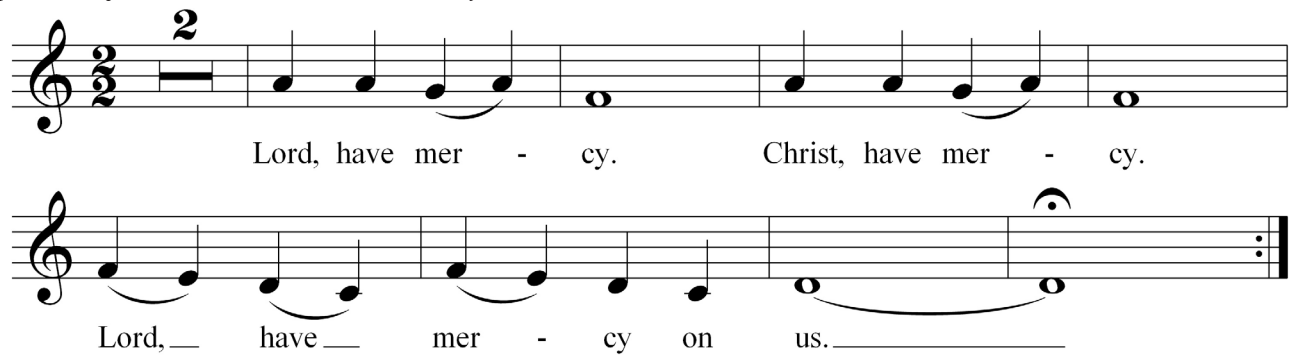
**All: And also with you.**

WORSHIP | EMBRACE | SERVE

*in the manner of Christ*

**\*Response Hymn 576 – Lord, Have Mercy**

music by Swee Hong Lim, SINGAPURA



**WE PROCLAIM GOD’S WORD**

**Sacrament of Baptism**

(9:30) **Lauren Douglas Overton**, child of Andrea and Lewis Overton

**Old Testament Lesson** – Genesis 9:8-17, pew Bible p. 7

**(11:00) A Time With Young Disciples**

Following our time together, children will return to the pews for the remainder of the service.

**\*Hymn 166 – Lord, Who Throughout These Forty Days**

ST. FLAVIAN

**New Testament Lesson** – 1 Peter 3:18-22, pew Bible p. 218

*One: The word of God for the people of God.*

**All: Thanks be to God.**

**Sermon** – “*Baptism and the Journey Within*”

Christopher Edmonston

**WE RESPOND TO GOD’S WORD**

**Prayers of the People and the Lord’s Prayer**

Anne Galliher

**Our Father, who art in heaven, hallowed be thy name,  
thy kingdom come, thy will be done, on earth as it is in heaven.**

**Give us this day our daily bread; and forgive us our debts,  
as we forgive our debtors; and lead us not into temptation,  
but deliver us from evil.**

**For thine is the kingdom and the power and the glory, forever. Amen.**

**Presentation of Tithes and Offerings**

**Offertory** – (9:30) *Adagio* from *Fantasy in f minor*

Wolfgang Amadeus Mozart (1756-91)

(11:00) *Like as the Hart*

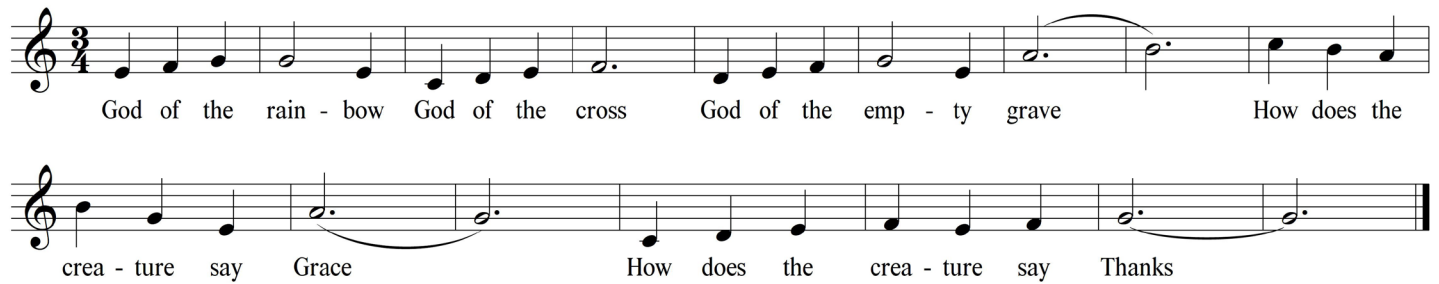
Herbert Howells (1892-1983)

WMPC Adult Choir

*Like as the hart desireth the waterbrooks:  
so longeth my soul after thee, O God.  
My soul is athirst for God, yea, even for the living God:  
when shall I come to appear before the presence of God?  
My tears have been my meat day and night:  
while they daily say unto me, “Where is now thy God?” (Psalm 42:1-3)*

**\*Offertory Response Hymn 22, verse 3 – *God of the Sparrow***

ROEDER



**\*Affirmation of Faith**

The Apostles' Creed

I believe in God,  
the Father Almighty,  
Maker of heaven and earth,  
and in Jesus Christ, his only Son, our Lord,  
who was conceived by the Holy Ghost,  
born of the virgin Mary,  
suffered under Pontius Pilate,  
was crucified, dead, and buried;  
he descended into hell;  
the third day he arose again from the dead;  
he ascended into heaven, and sitteth on the right hand of God  
the Father Almighty;  
from thence he shall come to judge the  
quick and the dead.  
I believe in the Holy Ghost;  
the holy catholic church;  
the communion of saints;  
the forgiveness of sins;  
the resurrection of the body;  
and the life everlasting.  
Amen.

**WE GO IN GOD'S NAME**

**\*Hymn 490 – *Wash, O God, Your Sons and Daughters***

BEACH SPRING

**\*Charge & Benediction**

**\*Chiming of the Trinity**

The worship service ends with the Chiming of the Trinity.  
Please be mindful of those who remain to listen to the postlude.

**Postlude – *Allegro* from *Fantasy in f minor***

W. A. Mozart

**WELCOME TO WHITE MEMORIAL  
PRESBYTERIAN CHURCH, PC (USA)**

We are glad you are worshipping with us.  
Visiting? Deacons can be found in the Narthex  
to offer a friendly greeting, answer  
questions and provide directions.  
New members are received after attending  
*Believing & Belonging @WMPC* Class.  
Visit [whitememorial.org/join](http://whitememorial.org/join)  
or contact Elizabeth Viohl at ext. 206  
for details, class dates and registration.

**THINGS TO KNOW:**

- **Restrooms** are located on the hallway to Jane Bell Gathering Space on the Pulpit side and also on the first floor of the Luther Building.
- **Childcare** is available for children up to four years old.
- **Sunday School** is offered at 9:30 for all ages.
- **Refreshments** and coffee stations are located in The Connector and Main Hall
- **The Sanctuary** has a loop hearing aid system and an FM system.
- **Live-streamed services** are at [whitememorial.org](http://whitememorial.org).
- **Radio**, WPTF 680 AM, every other Sunday at 11:00 a.m.: next broadcast is February 18.
- **Bulletins** left in the sanctuary following worship services are recycled as part of our care for God's creation.



We are a Stephen Ministry congregation.

**PASTORAL & PROGRAM STAFF:**

**CHRISTOPHER EDMONSTON**, Pastor

**ANDREW AMODEI**, Executive Director

**CYNTHIA BAGGETT**, Director of Weekday School

**GENEVIEVE BROOKS**, Director of Youth Ministry

**CATE CHURCH NORMAN**, Associate Pastor  
for Pastoral Care

**BROCK DOWNWARD**, Dir. of Music Emeritus

**JENNIFER EASTMAN**, Director of Young  
Children's Ministry

**JIM FERRY**, Parish Associate

**ANNE GALLIHER**, Associate Pastor for Small Groups  
& Young Adults

**HEATHER GARRABRANT**, Health Ministry  
Coordinator

**KELLY GOLD**, Director of Children's and Youth Music

**KIRSTEN HOMDROM**, Associate Director of Music

**KATHY HOWELL**, Communications Director

**LEE HUNTER**, Pastoral Resident

**LIZ MCKEE**, Director of Development

**BAILEY MORTON**, Assistant Director of Youth Ministry

**ERIC NANZ**, Associate Director of Music and  
Worship Arts

**LINDA NUNNALLEE**, Director of Community  
Engagement

**CHIP POPE**, Associate Pastor for Family Ministry

**GRIER BOOKER RICHARDS**, Associate Pastor for  
Discipleship and Adult Faith Formation

**ART ROSS**, Pastor Emeritus

**JUDY YATES SIKER**, Parish Associate

**LYNN SPRINGFIELD**, Director of Elementary Ministry

**COLISHA C. STANFORD**, StepUp Director

**MARTHA STEVENSON**, Educator Emerita

**KARL ZINSMEISTER**, Director of Music

**AFTER HOURS PASTOR ON CALL:** 919-605-4593

Each Sunday we offer three opportunities for you to worship with us at White Memorial in the Sanctuary and OnPoint@1704 in the Main Hall. While you will notice differences in music, location, and worship leadership among our different services, what unites us in our worship is our scripture, liturgy, and sermon. All services use the same Call to Worship, Prayer of Confession, readings from Scripture, and Affirmation of Faith.

## JOYS & CONCERNS

### PRAYERS AND CHRISTIAN CONCERNS TO

**Staff member Paris Parrish and family**, on the death of his grandfather,  
Jessie Lee Wise, January 31, Danville, VA

**Alden Maier and family**, on the death of her father,  
Herman Armin Maier, III, February 5, Rome, GA

\*\*\*

Music in today's service presented with permission under  
Podcast/Streaming License with One License #714069.



**Shortcuts!** Find out what's happening around White Memorial during the week. Register for events. Request a prayer. All this can be found in one location. Simply scan the QR code with your smart phone.

## CALENDAR FOR THE WEEK

### SUNDAY | FEBRUARY 18

*Genesis 9:8-17; 1 Peter 3:18-22*

### MONDAY | FEBRUARY 19

*Psalm 77; Job 4:1-21; Ephesians 2:1-10*

#### Outreach Sewing Group

9:30 a.m. - 2:00 p.m. | C200

#### Pickleball at WMPC!

2:00 - 4:00 p.m. | Pickard Hall

### TUESDAY | FEBRUARY 20

*Job 5:8-27; 1 Peter 3:8-18a*

#### Men's Breakfast & Bible Study

Breakfast Line | 7:00 a.m. | Main Hall

Bible Study | 7:30 a.m.

#### Women's Breakfast & Fellowship

7:00 - 8:00 a.m. | The Hub

Women of all ages are invited to a hot breakfast, fellowship, study, and prayer. Contact Marilyn Jones at [merjones411@gmail.com](mailto:merjones411@gmail.com) for more information. Hosted by Circle M.

#### Oncology Yoga

10:00 - 11:00 a.m. | C200

#### Cancer Companions

6:30 - 8:00 p.m. | Zoom

For more information, contact Parish Associate [Jim Ferry](#) or [Amanda Kidd](#).

### WEDNESDAY | FEBRUARY 21

*Proverbs 30:1-9; Matthew 4:1-11*

#### Pickleball at WMPC!

2:00 - 4:00 p.m. | Pickard Hall

#### Wednesday Together Dinner

5:00 - 6:30 p.m. | Main Hall

Join us for fellowship and a delicious dinner of Swedish meatballs! [Register by 11:00 p.m. Sunday, February 18.](#)

### THURSDAY | FEBRUARY 22

*Psalm 22:23-31; Genesis 15:1-6, 12-18; Romans 3:21-31*

#### Lenten Contemplative Retreat – Journey into Forty Days

9:00 a.m. - 4:00 p.m. | WMPC Campus | [Registration required](#)

Today, Cate Church Norman and Lee Hunter guide us into forty days of discipleship with one of Christ's most faithful disciples, Mary Magdalene.

#### Keenagers

10:45 a.m. | Geneva Hall

This week, we will learn about SAFEchild and their new space. Questions? Contact [Mariel Lee](#).

#### Lenten Lunch and Worship

12:00 - 12:30 p.m. - lunch

12:30 - 1:00 p.m. - worship | Main Hall + Facebook Live

[Register for lunch.](#)

#### Caregiver's Coffee

1:30 - 3:00 p.m. | The Hub

Please come for coffee, conversation, and connection with other family caregivers.

### FRIDAY | FEBRUARY 23

*Genesis 16:1-6; Romans 4:1-12*

### SATURDAY | FEBRUARY 24

*Genesis 16:7-15; Mark 8:27-30*

## SAVE THE DATES

#### Children's Movie Night: *Trolls: Band Together*

Friday | March 1 | 6:00 - 8:00 p.m. | C200 | [Registration required](#)

Children in Kindergarten – 5th grade are invited to join us for Movie Night! Pizza is available for \$6.00 per person. Bring your sleeping bag!

#### Servant Saturday

Saturday | March 2 | 10:00 a.m. | Pickard Hall

All are welcome to join us as we work on a service project together. This is a fun opportunity for all ages! For more information, contact Jan Stewart at [thestewarts2614@gmail.com](mailto:thestewarts2614@gmail.com).

#### Sounds on Oberlin: NU-BLU

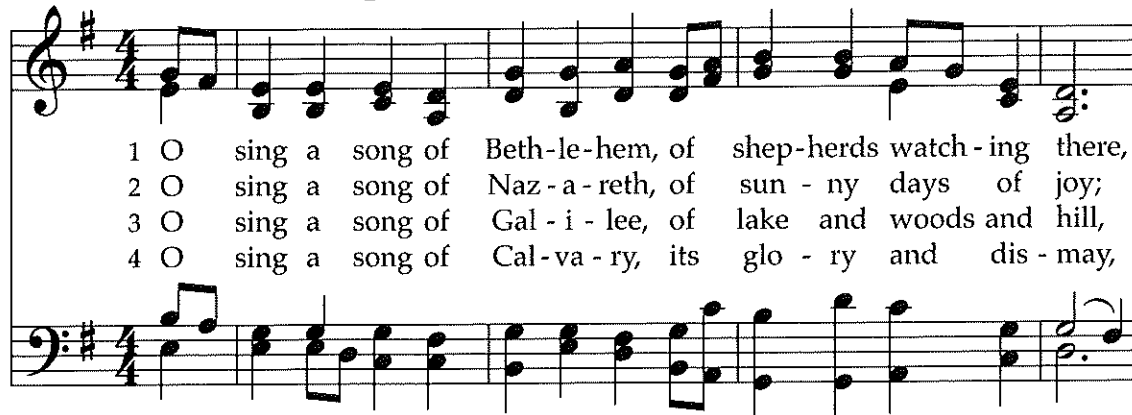
Sunday | March 3 | 3:00 p.m. | Main Hall

Get ready for an afternoon of music from chart-topping bluegrass band Nu-Blu! With a sound that acknowledges the traditional institutions that have shaped it, Nu-Blu brings a fresh sparkle to contemporary acoustic music. Admission is free.

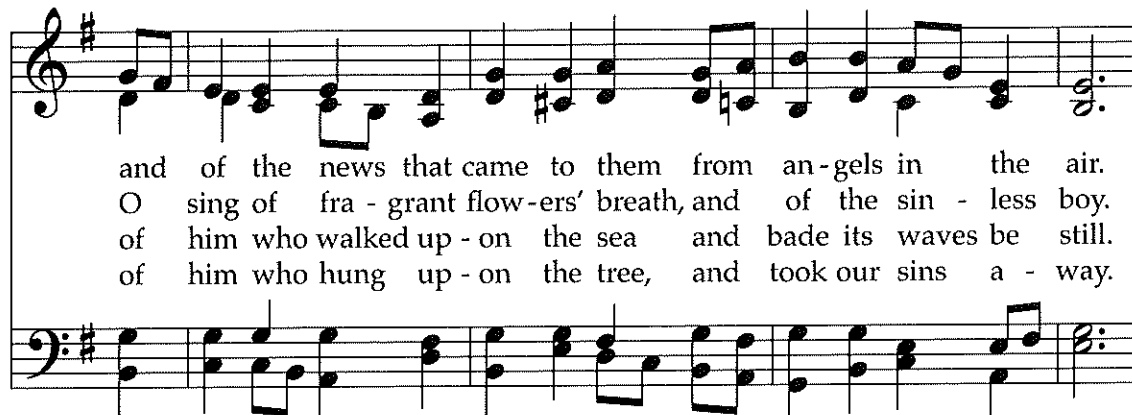
#### Caregiver's Coffee

Tuesday | March 5 | 10:30 a.m. - 12:00 p.m. | The Hub

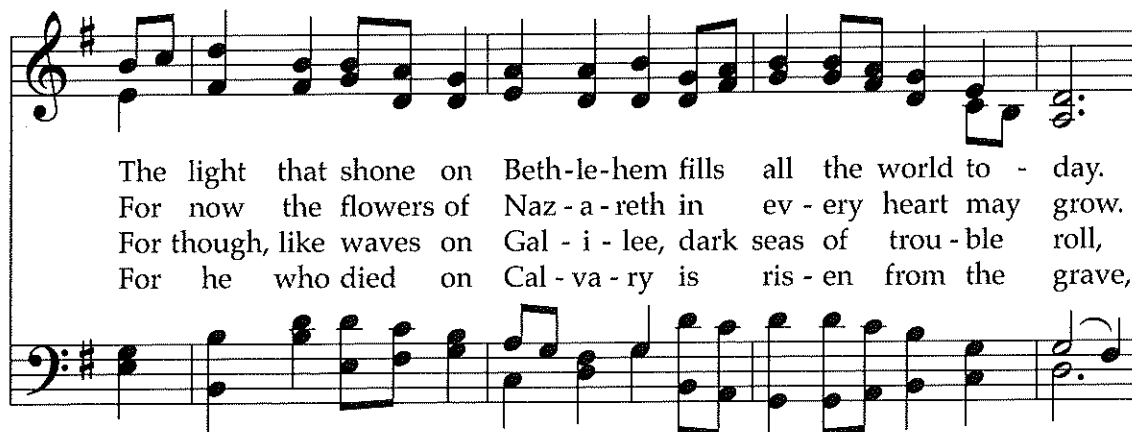
## 159 O Sing a Song of Bethlehem



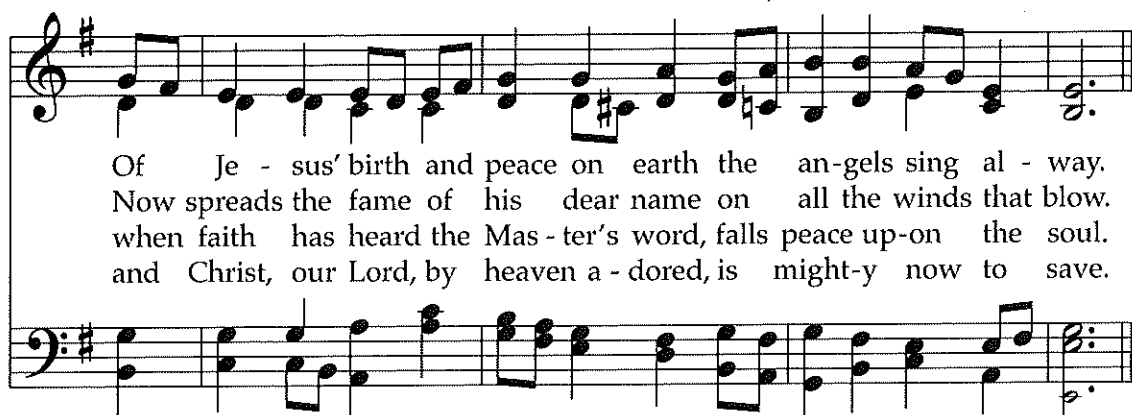
1 O sing a song of Beth-le-hem, of shep-herds watch-ing there,  
 2 O sing a song of Naz-a-reth, of sun-ny days of joy;  
 3 O sing a song of Gal-i-lee, of lake and woods and hill,  
 4 O sing a song of Cal-va-ry, its glo-ry and dis-may,



and of the news that came to them from an-gels in the air.  
 O sing of fra-grant flow-ers' breath, and of the sin-less boy.  
 of him who walked up-on the sea and bade its waves be still.  
 of him who hung up-on the tree, and took our sins a-way.



The light that shone on Beth-le-hem fills all the world to-day.  
 For now the flowers of Naz-a-reth in ev-ery heart may grow.  
 For though, like waves on Gal-i-lee, dark seas of trou-ble roll,  
 For he who died on Cal-va-ry is ris-en from the grave,

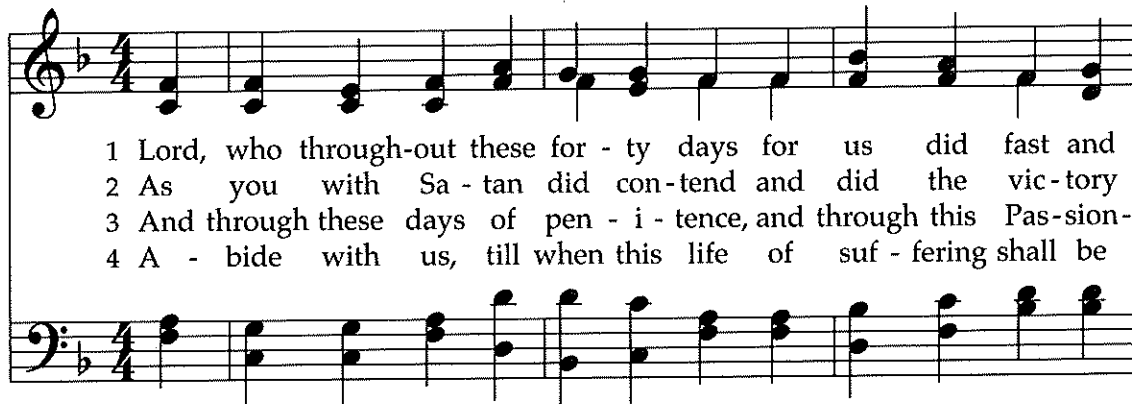


Of Je-sus' birth and peace on earth the an-gels sing al-way.  
 Now spreads the fame of his dear name on all the winds that blow.  
 when faith has heard the Mas-ter's word, falls peace up-on the soul.  
 and Christ, our Lord, by heaven a-dored, is might-y now to save.

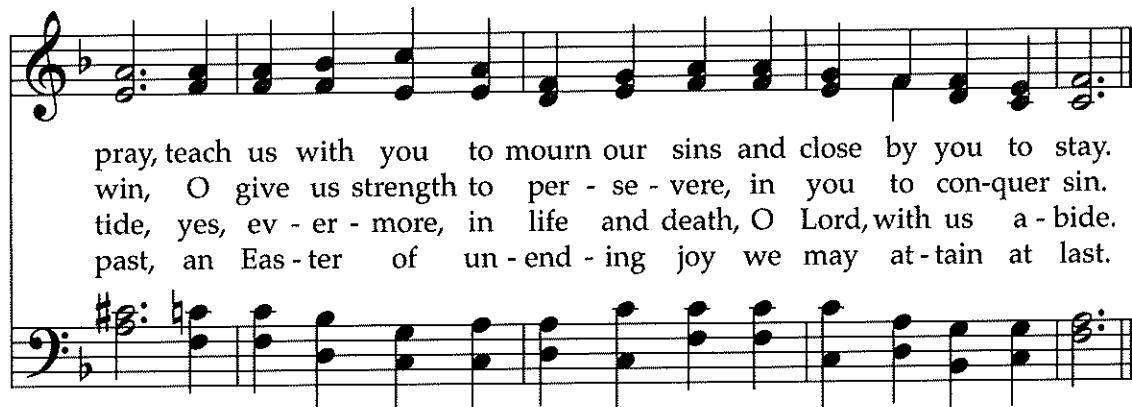
This hymn created by a noted Presbyterian hymnal editor and scholar employs place names and sensory images (light, fragrance, wind) to sketch the events of Christ's life. The tune name commemorates the village in Sussex where the arranger first heard the traditional melody.

# Lord, Who throughout These Forty Days

166



1 Lord, who through-out these for - ty days for us did fast and  
 2 As you with Sa - tan did con-tend and did the vic-tory  
 3 And through these days of pen - i - tence, and through this Pas-sion-  
 4 A - bide with us, till when this life of suf - fering shall be



pray, teach us with you to mourn our sins and close by you to stay.  
 win, O give us strength to per - se - vere, in you to con-quer sin.  
 tide, yes, ev - er - more, in life and death, O Lord, with us a - bide.  
 past, an Eas - ter of un - end - ing joy we may at-tain at last.

Like many of this author's hymns, this text was written primarily for children but works equally well in reminding adults how Lent connects us with Christ's temptation in the wilderness and prepares us for Easter. The 16th-century English psalm tune provides sturdy support.

# Wash, O God, Your Sons and Daughters

Capo 3: (D) F (Bm) Dm (G) B $\flat$



1 Wash, O God, your sons and daugh-ters, new - born crea - tures  
2 Ev - ery day we need your nur - ture; by your milk may  
3 O how deep your ho - ly wis - dom! Un - i - mag - ined,

(D) F (Bm) Dm



of your womb. Num-ber them a - mong your peo - ple, raised like  
we be fed. Let us join your feast, par - tak - ing cup of  
all your ways! To your name be glo - ry, hon - or! With our

(G) B $\flat$  (D) F (A) C



Christ from death and tomb. Weave them gar - ments bright and  
bless - ing, liv - ing bread. God, re - new us; guide our  
lives we wor - ship, praise! We your peo - ple stand be -

(Bm) Dm (F $\sharp$ m) Am (Bm) Dm (G) B $\flat$  (A) C (D) F



spark-ling; com-pass them with love and light. Fill, a - noint them;  
foot - steps, free from sin and all its snares, one with Christ in  
fore you, wa - ter-washed and Spir - it - born. By your grace, our

(Bm) Dm (G) B $\flat$  (D) F



send your Spir - it, ho - ly dove and heart's de - light.  
liv - ing, dy - ing, by your Spir - it, chil - dren, heirs.  
lives we of - fer. Re - cre - ate us; God, trans - form!

*Guitar chords do not correspond with keyboard harmony.*

This text incorporates many of the images associated with the water of baptism in the Thanksgiving Over the Water in *The Book of Common Worship*, especially nourishment, the calling forth of life, cleansing and renewal, freedom from bondage, and sharing in Christ's resurrection.