

WHITE MEMORIAL PRESBYTERIAN CHURCH

SERVICE FOR THE FOURTEENTH SUNDAY AFTER PENTECOST
September 14, 2025 | 9:30 & 11:00 a.m.

WE GATHER TO WORSHIP

The sound of bells summons us to gather for worship.

Preparation for Worship

Almighty God, you have broken the tyranny of sin and sent the Spirit of your Son into our hearts. Give us grace to dedicate our freedom to your service, that all people may know the glorious liberty of the children of God; through Jesus Christ our Lord, who lives and reigns with you and the Holy Spirit, one God, now and forever. Amen.

Prelude “Lo, the winter is past...the flowers appear...” Marcel Dupré, composer

Call to Worship

The tree of life my soul hath seen, laden with fruit and always green.
The trees of nature fruitless be compared with Christ, the apple tree.

His beauty doth all things excel: by faith I know, but ne’er can tell
the glories which I now can see in Jesus Christ, the apple tree.

*Hymn 664 Morning Has Broken

BUNESSAN

*Confession and Pardon

Grier Booker Richards

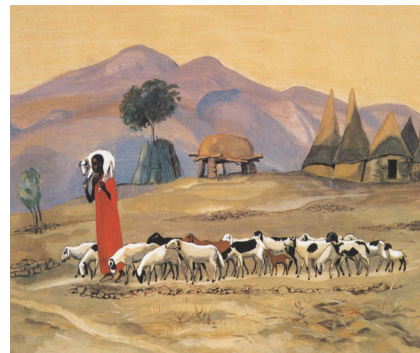
**God of mercy and grace, we lay our sins before you.
We pray that you would heal the wounds of our souls,
admitting that it is sin which clouds our judgment,
misleads us, and misdirects us.
We confess that in spite of all you have provided
through your wisdom and word,
we still get lost from time to time.
In the name of Jesus, keep seeking us out.
By the power of the Spirit, give us the tools for renewal
that we might seek justice, love kindness,
and live with humility towards you and others.
All this we ask in Jesus’ name. Amen.**

Silent prayers

For happiness I long have sought, and pleasure dearly I have bought.
I missed of all, but now I see ‘tis found in Christ, the apple tree.
I’m weary with my former toil: here I will sit and rest awhile.
Under the shadow I will be of Jesus Christ, the apple tree.

*Hymn 582 Glory to God, Whose Goodness Shines on Me

GLORY TO GOD



The good shepherd, © 1973, JESUS
MAFA

* Asterisks invite us
to rise in body or spirit.

Words in bold are for
everyone to say or sing.

Today we celebrate the Lord’s
Supper by intinction. If you prefer
pre-packaged elements, please pick
these up in the narthex or Jane Bell
Gathering Space prior to the service.

Like its Song of Solomon epigraph,
this swift-winged prelude by Marcel
Dupré imagines budding and
fruition. It is followed by a wondrous
metaphor in a North American
carol text, sung to music by Mark
Patterson (9:30) and Elizabeth Poston
(11:00). These come full circle in the
beloved hymn we sing—a “garden
song” of the “completeness where
God’s feet pass.” Olsen Richards,
Anneliese Goettsch, and OnPoint
Band members, musicians

WORSHIP | EMBRACE | SERVE

in the manner of Christ

***Peace**

The peace of Christ be with you all.
And also with you.

Christian Welcome and Announcements

Please pass the Friendship Register to your neighbor and include all requested information.

WE PROCLAIM GOD'S WORD

Sacrament of Baptism (11:00)

*Young Children are invited to come forward for the baptisms.
Following our time together, children will return to the pews for the remainder of the service.*

Erwin Thompson Williams V, son of Abbey and Winn Williams
Sally Marie White, daughter of Rebecca and William White



1 You have put on Christ; in Christ you have been bap - tized.
2 We have put on Christ; in Christ we have been bap - tized.

Al - le - lu - ia! Al - le - lu - ia!

Prayer for Illumination

First Reading 1 Timothy 1:12-17

pew Bible p. 199

Second Reading Luke 15:1-10

pew Bible p. 73

The word of God for the people of God.
Thanks be to God.

Sermon 1 versus 99

Christopher Edmonston

***Affirmation of Faith**

Anne Galliher

**In everlasting love,
the God of Abraham and Sarah chose a covenant people
to bless all families of the earth.
Hearing their cry, God delivered the children of Israel
from the house of bondage.
Loving us still, God makes us heirs with Christ of the covenant.
Like a mother who will not forsake her nursing child,
like a father who runs to welcome the prodigal home, God is faithful still.
In gratitude to God, empowered by the Spirit,
we strive to serve Christ in our daily tasks and to live holy and joyful lives,
even as we watch for God's new heaven and new earth,
praying, "Come, Lord Jesus!"
With believers in every time and place,
we rejoice that nothing in life or in death can separate us
from the love of God in Christ Jesus our Lord.**

WE SHARE THE LORD'S SUPPER

Offerings

G. Herbert/R. Vaughan Williams

Love bade me welcome,
yet my soul drew back,
guilty of dust and sin.

But quick-eyed Love
observing me grow slack from my first entrance in,
drew nearer to me, sweetly questioning,
if I lacked anything.

"A guest," I answered, "worthy to be here."
Love said, *You shall be he.*

"I, the unkind, ungrateful? Ah, my dear, I cannot look on thee."
Love took my hand, and smiling did reply,
Who made the eyes but I?

"Truth, Lord, but I have marred them:
let my shame go where it doth deserve."
And know you not, says Love,
who bore the blame?

"My dear, then I will serve."
You must sit down, says Love,
and taste my meat.

So I did sit and eat.

This poem by George Herbert (1593-1632) is a conversation: Love makes an invitation to the feast, gently and inexorably pulling us past our self-imposed objections. The exquisite musical setting is by Ralph Vaughan Williams, from his *Five Mystical Songs*. Jared Smith is soloist.

Invitation

Great Thanksgiving

The Lord be with you. **And also with you.**
Lift up your hearts. **We lift them to the Lord.**
Let us give thanks to the Lord our God.
It is right to give our thanks and praise.

**Our Father, who art in heaven, hallowed be thy name,
thy kingdom come, thy will be done, on earth as it is in heaven.
Give us this day our daily bread; and forgive us our debts,
as we forgive our debtors; and lead us not into temptation,
but deliver us from evil.
For thine is the kingdom and the power and the glory, forever. Amen.**

Breaking, Pouring, and Serving

Today we receive communion by intinction. You are invited to come to stations at the front or the rear to receive the bread and then to dip it in the cup. All bread is gluten-free, and all cups contain grape juice. Pre-packaged elements are also available at the stations or in the Jane Bell Gathering Space.

This hymn text appeared in 1998 and quickly entered the sung repertory of many communities because of its broad and specific language of inclusion. Over the years, new stanzas have appeared by Shirley Erena Murray, the original author, as well as by other authors—a rare example of a hymn’s evolving sung life and responsiveness to the people of God. These stanzas are one revision made in 2022 by hymnwriter Dan Damon.

*Hymn 769 For Everyone Born

FOR EVERYONE BORN

refrain sung by all

For everyone born, a place at the table,
for everyone born, clean water and bread,
a shelter, a space, a safe place for growing,
for everyone born, a star overhead,

And God will de-light when we are cre - a - tors of jus - tice and
joy, com - pas - sion and peace. Yes,
God will de-light when we are cre - a - tors of jus - tice,
jus - tice and joy.

For those we neglect, a place at the table,
a voice to be heard, a part in the song,
the hands of a child in hands that are wrinkled,
for those we neglect, the right to belong, *refrain*

For all who have breath, a place at the table,
a covenant shared, a welcoming space,
a rainbow of race and gender and color,
for all who have breath, the chalice of grace, *refrain*

For everyone born, a place at the table,
to live without fear, and simply to be,
to work, to speak out, to witness and worship,
for everyone born, the right to be free, *refrain*

Prayer

WE GO IN GOD’S NAME

*Hymn 741 Guide My Feet

GUIDE MY FEET

*Charge & Benediction

*Chiming of the Trinity

*Postlude Toccata in C/For Everyone Born

J.S. Bach/B. Mann

This African-American spiritual’s firm music carries both the prayer that God will guide us and the affirmation that we belong to God. Like the shepherd and the woman in Luke’s text today, whose love and commitment are not in vain, the singer places trust in God’s will to find and be found.

Music in today’s service presented with permission under Podcast/Streaming License with OneLicense number #714069



WELCOME TO WHITE MEMORIAL
PRESBYTERIAN CHURCH, PC (USA)

We're so glad you are
worshiping with us today.

Visiting?

Deacons are in the Narthex
to offer a friendly greeting,
answer questions, and provide
directions.

Looking to Become a Member?

New members are received
after attending the *Believing &
Belonging* @WMPC class.
Visit whitememorial.org/join or
contact Elizabeth Viohl at
ext. 206 for class dates,
registration, and details.

Things to Know

Restrooms

Hallway to Jane Bell Gathering
Space (Pulpit side) and first floor
of the Luther Building.

Childcare

Available for children
up to 4 years old.

Sunday School

9:30 a.m. for all ages.

Refreshments & Coffee

The Connector and Main Hall.

Hearing Assistance

Loop system and FM system
available in the Sanctuary.

AED/Narcan Locations

WMPC campus has five AED/
Narcan locations around
campus: Narthex- Sanctuary,
Main Hall-Edinburgh,
Lobby-Ross, Lobby-Calvin,
3rd floor-Luther

Live Streaming

Services available at
whitememorial.org.
Facebook & YouTube

Bulletins

Recycled after services as part
of our care for God's creation.



Joys & CONCERNS

IN THE CHURCH TRIUMPHANT

Doris Keith Stanley - September 3, 2025

WMPC family members: husband, Bob; son and daughter-in-law, Bobby and Miller Stanley; grandchildren, Holden Clark and Jimbo Stanley

NEW PRESBYTERIANS

Thomas Blayne Easterling, August 26, child of Taylor and Andrew Easterling, grandchild of Carol and Robbo Newcomb

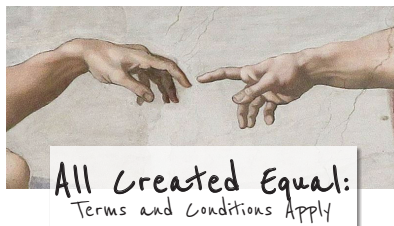
CONGRATULATIONS TO:

Sandra Gray on the birth of her great-grandchild, Amaura Jean Gray, August 28, child of Jennifer and Justin Gray

If you have experienced a birth, marriage or death you want to share with the church,
email Lisa Crumpler at lcrumpler@whitememorial.org

If you have a relative or church friend who is hospitalized,
call the Pastoral Care line 919-834-3425, ext. 210 or email Caroline Parker
at cparker@whitememorial.org so our pastoral staff can reach out.

If you have a pastoral care need outside of regular business hours,
call our after-hours pastor on call at 919-605-4593.



ALL CREATED EQUAL: TERMS & CONDITIONS APPLY

Lunch & Learn with Wojciech Szczerba

Sunday | September 14

12:00-2:00 p.m. | Geneva Hall

Join us for lunch and an engaging
conversation with our Poland Ministry
Partner, Wojciech Szczerba. Expect a
lively (and at times, thought-provoking)
discussion on human nature and the
concept of Imago Dei. Must have
registered to attend this event.

20s + 30s HAPPY HOUR

Thursday | September 18

Drop in from 6:00 - 8:00 p.m.

Lynwood Brewing Concern

1053 E Whitaker Mill Rd

Join us at LBC for an evening of fellowship
and fun. This is a floating event, so feel
free to stop in anytime. When you get to
Lynwood, look for the blue balloon. That's
where we will be gathered!



CAREGIVER'S COFFEE

Tuesday | September 16

10:30 a.m. - noon | The Hub

Are you interested in learning more about
the many community resources available
to support family caregivers? Then you will
not want to miss our first fall Caregiver's
Coffee on Tuesday, September 16 from
10:30 a.m. – noon in the Hub. We will be
joined by representatives of home care
providers, assistance with choosing a
senior community, and dementia support.
Please come for coffee, conversation and
connection. All are welcome; please feel
free to invite a friend or neighbor to join
you. Questions? Contact Martha Grove
Hipskind at mghipskind@whitememorial.org.

A Snapshot of What's Happening This Week at WMPC

Sunday, September 14

1 Timothy 1:12-17; Luke 15:1-10

- **Lunch & Learn with Wojciech Szczerba**
12:00 | Geneva Hall
- **Children's Movie Night**
5:00 | C200
- **Club 4/5**
5:00 | C100

Monday, September 15

Psalms 94; Jeremiah 5:1-17

- **Bridge With Friends**
1:00 p.m. | The Hub
- **Pickleball**
2:00 p.m. | Pickard Hall
- **Tai Chi**
5:30 p.m. | Pickard Hall

Tuesday, September 16

Psalms 94; Jeremiah 5:18-31; 2 Peter 3:8-13

- **Men's Breakfast/Bible Study**
7:00 a.m. | Geneva Hall
- **Women's Breakfast/Circle M**
7:00 a.m. | The Connector
- **Gentle Yoga**
8:30 a.m. | C200
- **Caregiver's Coffee**
10:30 a.m. | The Hub
- **Cancer Companions**
6:30 p.m. | Virtual

Wednesday, September 17

Psalms 94; Jeremiah 14:1-10

- **Chair Yoga**
10:00 a.m. | C200
- **Lectio Divino**
11:00 a.m. | Virtual
- **Yin Yoga**
11:15 a.m. | C200
- **Centering Prayer**
11:30 a.m. | Virtual
- **Pickleball**
2:00 p.m. | Pickard Hall
- **Wednesday Together Dinner**
5:00-6:30 p.m. | Main Hall

For more information about any of these events, please visit our website whitememorial.org or call the church office 919-834-3424.

Congregational Care + Health



ANNOUNCING LGBTQ+ SUPPORT

Monday | September 22 | 7:00 p.m. | Chapel

We're pleased to announce a new initiative for LGBTQ+ support at White Memorial. A new group called ALL ARE WELCOME will provide fellowship and confidential emotional nurturing for LGBTQ+ people of all ages. The overall initiative will also include straight allies devoted to these goals. Other objectives will be to encourage understanding and support of the LGBTQ+ community, invite people from other

congregations to join our activities, and create an atmosphere that welcomes all LGBTQ+ worshipers. Our first gathering of ALL ARE WELCOME will be Monday, September 22 at 7:00 PM in the Chapel. We'll meet on the 4th Monday of every month. For more information, contact Kathy Hart, hartmusic1@gmail.com or Caroline Parker, cparker@whitememorial.org.

DON'T FORGET YOUR FLU SHOT

Thursday | September 25
11:30 a.m. - 1:30 p.m. | K200

Wednesday | October 1
4:00-6:00 p.m. | K200

Don't let flu season catch you off guard! All members and staff are invited to come get their flu shot. You must be at least 14 years old to receive a flu shot at White Memorial Presbyterian Church. Please bring your insurance card.



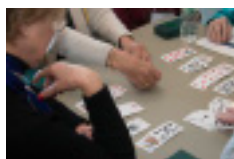
AGAPE CARE TEAMS

visits and communication with those who need the church to be brought to them. If you would like to make meaningful connections by visiting those who need the church to be brought to them, contact [Ann Rosar](mailto:Ann.Rosar@eamosar@gmail.com) at [eamosar@gmail.com](mailto:Ann.Rosar@eamosar@gmail.com) or [Caroline Parker](mailto:Caroline.Parker@cparker@whitememorial.org) at cparker@whitememorial.org for more information.

AGAPE CARE TEAMS: RECRUITING NEW VISITORS

Started in 2019, this ministry of presence creates opportunities for meaningful long-term connections between volunteers and individuals who, because of life circumstances, are seldom or never able to come to church. Trained visitors will share compassion and love through regular

Engagement and Faith Fellowship



COME PLAY BRIDGE WITH FRIENDS

Monday | September 8
1:00 p.m. | The Hub

Whether you are experienced, a beginner or want to learn how to play we invite you to join us! We'll practice different bridge hands, talk bidding, and enjoy fun and fellowship. For more information and to find out when we are gathering next contact Judy Bundy at judybundy7@gmail.com or Mary Grace White at marygrace623@yahoo.com.

KEENAGERS

Thursday | September 18
10:45 a.m. | Geneva Hall

Keenagers will hear a presentation on Milner Commons by Kayla Rosenberg followed by a delicious lunch provided by our food services staff.

FILM SCREENING

FROM PBS'S AMERICAN EXPERIENCE SERIES



SUNDAY | SEPTEMBER 28
4:30 - 6:30 P.M. | MAIN HALL

On Sunday, September 28, at 4:30 p.m. in the Main Hall, the MORE Ministry Team hosts a special screening of *American Coup: Wilmington 1898*, part of PBS's American Experience series. The film uncovers the violent overthrow of Wilmington's multiracial government—a pivotal chapter of North Carolina history long hidden from public view. Featuring scholars, descendants, and archival accounts, it sheds light on the coup's lasting legacy. The score includes an original song by North Carolina native Rhiannon Giddens, joined by Emmy Award-winner Keith David and a cast of national and local actors who bring first-hand voices to life.

The MORE Ministry Team has created a Reflection Guide, which we hope will enhance your viewing experience. You will see prompts to review before coming to the screening, helpful questions to guide your watching, and questions to help in your processing afterward.



MAHJONG NIGHT AT RALEIGH CHEESY

Tuesday | September 23 | 7:00 - 9:00 p.m.

Raleigh Cheesy | 3075 Medlin Drive

Come enjoy an evening of fun and fellowship playing mahjong at Raleigh Cheesy! Light snacks will be provided, and you're welcome to bring

your favorite beverage. Cost is \$10 per person. Please bring your own card.

[Registration is required.](#)

communitygroups

Engaging Faith & Friendship

REGISTRATION FOR 2025-26 COMMUNITY GROUPS OPEN!

[Registration is now open for 2025-2026 Community Groups!](#) Explore the different options and find a group where you can connect and grow. With Women's Book Clubs, Men's Groups, and Intergenerational Community Groups, there are plenty of ways to get connected to a community of faithful friends at WMPC. Groups meet at various frequencies/days from September-May. If you'd like to start a new group, please reach out to Anne Galliher at agalliher@whitememorial.org.

Intergenerational Community Group

A unique gift of church life is building friendships across generations. Sharing the journey with those ahead or behind us brings fresh perspective and wisdom. Once a month, women and men of all ages gather for conversation using the Community Group Guide. Led by Betsy Youngblood, this group is open to all. [Register now](#) or contact Anne Galliher at agalliher@whitememorial.org with questions.

A Snapshot of What's Happening This Week at WMPC

Thursday, September 18

Psalm 79:1-9; Jeremiah 12:14-13:11

- **Keenagers**
10:45 a.m. Geneva Hall
- **Note in the Pocket - Volunteer Opp.**
1:00 p.m. | offsite
- **20s + 30s Fall Happy Hour**
Drop in between 6:00 - 8:00 p.m. | offsite

Friday, September 19

Psalm 79:1-9; Jeremiah 8:1-13

- **Pickleball**
2:00 p.m. | Pickard Hall

Saturday, September 20

Psalm 79:1-9; Jeremiah 8:14-17; 9:2-11

- **Habitat for Humanity Site Build**
8:15 a.m. | offsite

CHRISTOPHER EDMONSTON, Pastor
CYNTHIA BAGGETT, Director of Weekday School
GENEVIEVE BROOKS, Director of Family Ministry
CATE CHURCH NORMAN, Associate Pastor for Pastoral Care
CLAIRE COX-WOODLIEF, Executive Director
BROCK DOWNWARD, Dir. of Music Emeritus
JENNIFER EASTMAN, Director of Young Children's Ministry
JIM FERRY, Parish Associate
ANNE GALLIHER, Associate Pastor for Small Groups & Young Adults
KELLY GOLD, Director of Children's and Youth Music
TOM HARRIS, Parish Associate
MARTHA GROVE HIPSKIND, Health Ministry Coordinator
KATHY HOWELL, Communications Director
LEE HUNTER, Pastoral Resident
BAILEY MORTON, Director of Youth Ministry
ERIC NANZ, Associate Director of Music and Worship Arts
LINDA NUNNALLEE, Director of Community Engagement
GRIER BOOKER RICHARDS, Associate Pastor for Discipleship and Adult Faith Formation
ART ROSS, Pastor Emeritus
JUDY YATES SIKER, Parish Associate
LYNN SPRINGFIELD, Director of Elementary Ministry
COLISHA C. STANFORD, StepUp Director
MARTHA STEVENSON, Educator Emerita
ERIC WALL, Director of Music



We are a Stephen Ministry congregation.

Outreach

HABITAT FOR HUMANITY SITE CONSTRUCTION FALL VOLUNTEER OPPORTUNITIES

Saturday | September 20 | 8:15 a.m. - 3:00 p.m.
Old Poole Place, Raleigh, NC

White Memorial is excited to join faith communities in building homes with Habitat for Humanity. While volunteers are welcome most Saturdays, these are the days when WMPC will serve together:

Saturday, September 20 – Old Poole Place, Raleigh

Saturday, October 18 – Old Poole Place, Raleigh

Saturday, December 13 – A New Neighborhood, Garner

Arrive at 8:15 a.m., take water breaks as needed, enjoy lunch together, and work until about 3:00 p.m.—or as long as you are able. Questions? Contact Eric Miller at eric_miller@ncsu.edu. Register here: whitememorial.org/event.

BACKPACK BUDDIES

Churchwide Collection

Each week when school is in session, our church provides food-insecure children at Oberlin Middle and Lynn Road Elementary Schools with healthy meals and snacks. Contact Jan Stewart, thestewarts2614@gmail.com. Amazon link on website.

Children & Youth



CHILDREN'S MOVIE NIGHT

Sunday | September 14
5:00 - 7:00 p.m. | C200.

Children in kindergarten-3rd grade are invited to watch Paddington in Peru on Sunday, September 14 from 5-7:00 p.m. Pizza is \$6.00 per person. Pre-registration required. whitememorial.org/register.

CLUB 4/5

Sunday | September 14
5:00 - 7:00 p.m. | C200.

Fourth and Fifth graders are invited to watch National Treasure in C100. Pizza is \$6.00 per person. Pre-registration required. whitememorial.org/register.



CIRCLE OF SECURITY PARENTING PROGRAM

In collaboration and partnership with SAFEchild, WMPC is offering a program to parents or grandparents of teens (6th-12th grade). At times, all parents feel lost or without a clue about what our child might need from us. Imagine what it might feel like if you were able to make sense of what your child was really asking from you. The Circle of Security Parenting™ program is based on decades of research about how secure parent-child relationships can be supported and strengthened. Classes begin on Sunday, September 21 - November 16 from 5:00-7:00 p.m. Cost for class is \$80 per person or \$120 per two-person family unit. Scholarships are available. Contact Kaitlyn Thornton for details at kthornton@whitememorial.org. [Registration open](http://whitememorial.org).

We're back with a wonderful lineup
for Season Eight!

Join Us 2025-26 Concert Series

Come to one, come to all!

MUSIC FROM UNC: FROM BAROQUE TO ROMANTIC

Sunday | September 21 | 2025
Sanctuary | 3:00 pm

Our season opens on **Sunday, September 21 at 3:00 p.m. in the Sanctuary** with *Music from UNC From Baroque to Romantic*, featuring works by J. S. Bach and Amy Beach. Performing will be acclaimed UNC musicians Brooks de Wetter-Smith, flute; Timothy Sparks, tenor; Debbie Davis, cello; Mike Harris, organ continuo; and Clara Yang, piano. A reception will follow in the Jane Bell Gathering Space. Admission is free; donations to support future concerts are warmly welcomed.

AND COMING UP...

Andrew Sords, violin, and Eriko Izumida, piano

Romance of the Violin:

works of Beethoven, Rachmaninoff, Chopin, and Sarasate
Sunday | October 12 | 3:00 p.m. | Sanctuary

Laurelyn Dossett

Christmas Strings and Vocals: Original Roots, Folk & Bluegrass
Sunday | November 16 | 3:00 p.m. | Sanctuary

MLK Concert: Songs of Love and Justice

A yearly collaboration with Wilson Temple and MORE Ministry
Sunday | January 18 | 3:00 p.m. | Sanctuary

New Day Singers, A Cappella Sextet

Sunday | February 22 | 3:00 p.m. | Sanctuary



Morning Has Broken

664



1 Morn-ing has bro - ken like the first morn - ing; black-bird has
 2 Sweet the rain's new fall sun - lit from heav - en, like the first
 3 Mine is the sun - light! Mine is the morn - ing, born of the



spo - ken like the first bird. Praise for the sing - ing! Praise for the
 dew - fall on the first grass. Praise for the sweet-ness of the wet
 one light E - den saw play! Praise with e - la - tion; praise ev - ery




morn - ing! Praise for them, spring - ing fresh from the Word!
 gar - den, sprung in com - plete - ness where God's feet pass.
 morn - ing, God's re - cre - a - tion of the new day!

This 20th-century text was created to provide words for this traditional tune named for a small village on the Isle of Mull, off the west coast of Scotland. Through repeated use of "new" and "first," each morning is treated as a re-creation of the promise of the original day.

582


Glory to God, Whose Goodness Shines on Me

Capo 3: (G) (D) (G) (D) (G) (D) (Em) (D)
B \flat F B \flat F B \flat F Gm F




1 Glo - ry to God, whose good - ness shines on me,
2 World with - out end, 7 with - out end. A - men.

(D) (G) (C) (G) (Em7) (A7)
F B \flat E \flat B \flat Gm7 C7




and to the Son, whose grace has par - doned me,
World with - out end, 7 with - out end. A - men.

(A7) (D) (F#) (Bm)
C7 F A Dm



and to the Spir - it, whose love has set me free.
World with - out end, 7 with - out end. A - men.

(Bm7) (D) (Bdim7) (Em7) (Dm)(A7) (D)
Dm7 F Ddim7 Gm7 Fm C7 F



As it was in the be - gin-ning, is now and ev - er shall be. A - men.

Guide My Feet

741

Guide my feet while I run this race;

(yes, my Lord!)

guide my feet while I run this race;

(yes, my Lord!)

guide my feet while I run this race, for I

don't want to run this race in vain! (race in vain!)

- | | |
|----------------------|-----------------------|
| 2 Hold my hand ... | 5 Search my heart ... |
| 3 Stand by me ... | 6 Guide my feet ... |
| 4 I'm your child ... | |

This African American spiritual is based on the imagery of "the race that is set before us" in Hebrews 12:1-2. Its call-and-response structure allows for the improvisation and addition of stanzas related to an athletic metaphor that is as vivid today as it was centuries ago.