

CAPITAL CAMPAIGN 2025



# FOUR PILLARS OF PROMISE

THE CAMPAIGN FOR RESTORATION & RENEWAL

WHITE MEMORIAL  
—PRESBYTERIAN CHURCH—





**TODAY,**  
WE ARE AT  
AN INTERSECTION OF  
NECESSITY  
AND RESPONSIBILITY.

*For the Lord is good. God's steadfast love  
and faithfulness to all generations endures forever.*  
- Psalm 100:5

# FOUR PILLARS OF THE CAPITAL CAMPAIGN

\$6.5 MILLION

## SANCTUARY

Our sanctuary has not been updated in decades and needs new wiring, lighting, paint, steeple restoration and audio-visual upgrades.

## LIFE SAFETY

Our Knox and Luther buildings need sprinkler systems and other life-safety features that will provide for our families for generations to come.

## MEMORIAL GARDEN

Extending the Memorial Garden along the side of Davidson Chapel will allow the addition of approximately 300 more interment niches.

## STEPUP MINISTRY

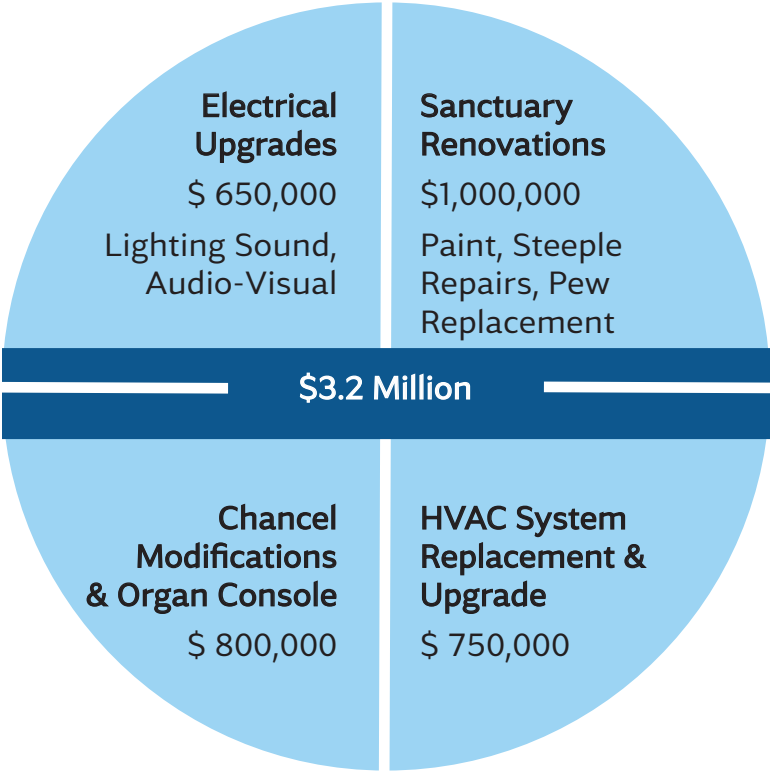
StepUp Ministry has outgrown its current space and needs an updated place to provide programming and much needed services to our community.

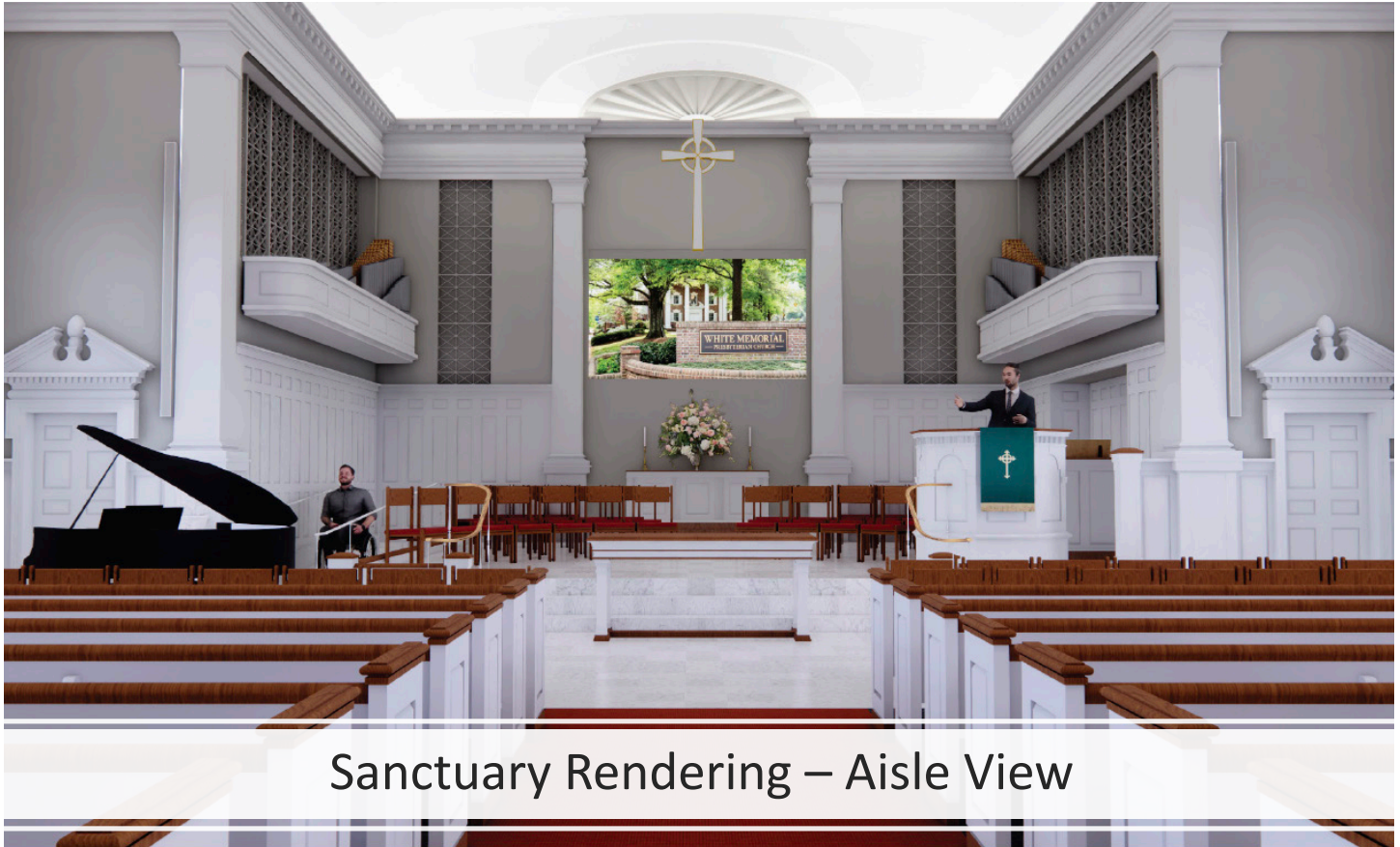
*And have them make me a sanctuary, so that I may dwell among them.*  
- Exodus 25:8

# SANCTUARY

Our sanctuary is the heart of WMPC’s life cycle. Much of our campus revolves around this central core, but the building is showing its age. We are excited to begin substantial restoration and improvements to prepare for future generations.

We will preserve the Sanctuary’s cherished traditional appearance while incorporating elements that enhance communication, safety, and comfort.





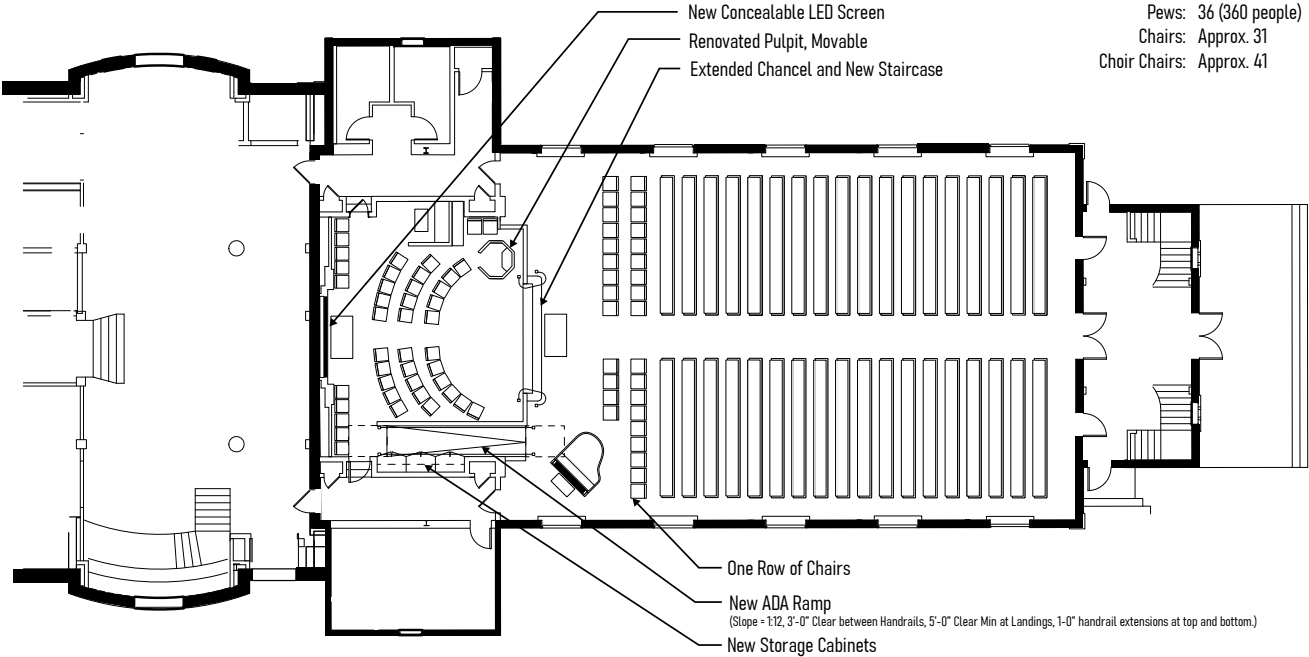
## Sanctuary Rendering – Aisle View





Sanctuary Rendering – Balcony View

# SANCTUARY CHANGES



## LIFE SAFETY FOR WEEKDAY AND SUNDAY SCHOOL SPACES



*Train children in the right way, and when old, they will not stray.*

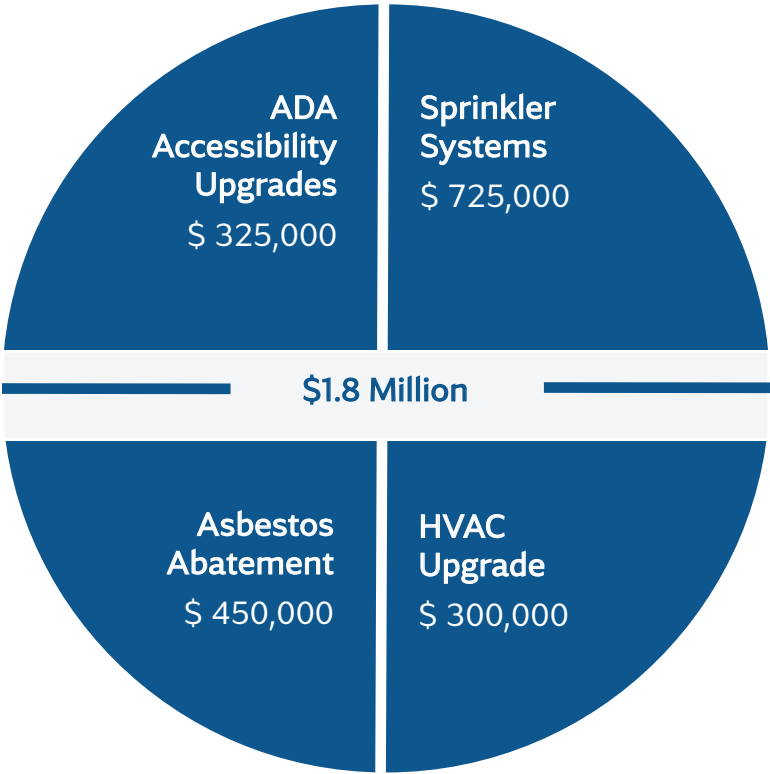
- Proverbs 22:6

**LIFE SAFETY FOR OUR WEEKDAY/  
SUNDAY SCHOOL SPACES  
(Knox & Luther Buildings)**

Our previous campaign addressed critical building improvements, but some safety issues remain unresolved.

Advancements in fire safety, accessibility, and asbestos abatement have created a need to enhance our facilities.

One key opportunity is to install sprinklers in the Luther building, which would allow us to remove firewalls and add lifts, improving access for individuals with special needs and children in the Weekday/ Sunday School spaces.



*I thank God every time I remember you.*  
- Philippians 1:3

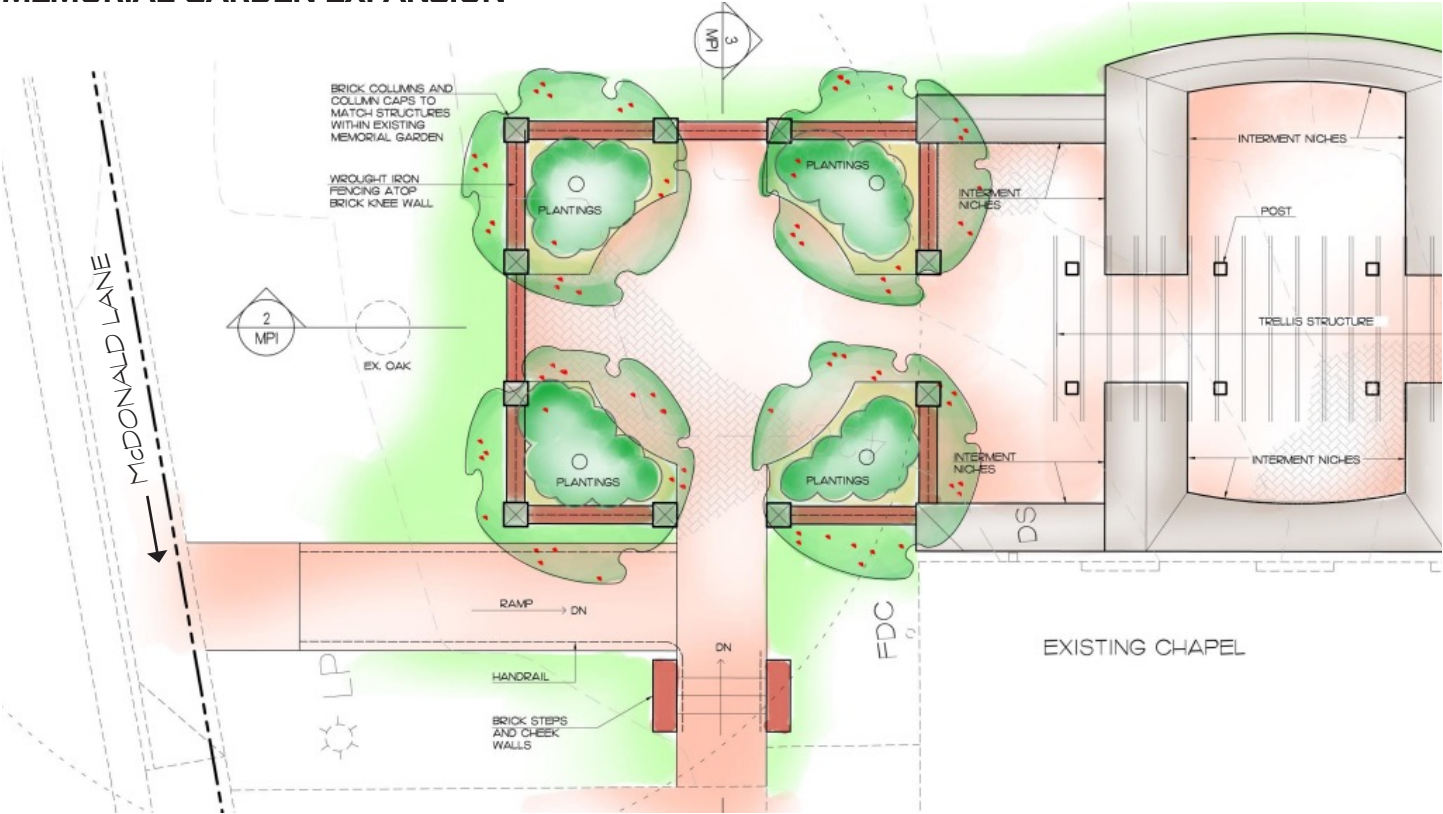
**MEMORIAL GARDEN EXPANSION**  
**\$500,000**

One of our most essential ministries is providing Witness to the Resurrection (funeral) services and offering comfort to those who have lost loved ones. Since 1997, our Memorial Garden has provided a peaceful interment space for hundreds of families. However, it is now expected to reach capacity within the next three to five years.

By extending the Memorial Garden alongside Davidson Chapel, we can add approximately 300 more interment niches to the existing 170. This expansion will ensure that this space continues to serve families for many years to come.



MEMORIAL GARDEN EXPANSION









## STEPUP MINISTRY CONTRIBUTION

### \$1,000,000

White Memorial established StepUp Ministry as an independent nonprofit in 1988, showcasing a partnership that embodies the Kingdom of God—a collaboration across racial, economic, and cultural lines for the benefit of all.

To support this partnership, WMPC plans to contribute \$1,000,000 for a new building, as the current one is in disrepair and lacks adequate space for counseling, family intake, and training programs. The new two-story, 8,000-square-foot brick facility will be similar in style with our campus and neighborhood.

The new building will include:

- Expanded ministry services and training
- A job skills and digital literacy center
- Space for teens and youth
- GG's Closet
- Case management and meeting areas
- A confidential client intake space
- Space for prayer and spiritual support services

StepUp will also launch a capital campaign to raise \$5 million for construction and furnishings, while operating under a renewed long-term land lease from WMPC. If StepUp moves, the building will revert to WMPC ownership.

# FREQUENTLY ASKED QUESTIONS

## GENERAL

**1. What will be prioritized if only part of the money is raised?**

The majority of the campaign funds will be dedicated to renovating our buildings and planning for future needs related to funerals and weekday services. These necessary renovations fall outside the scope of normal maintenance and must be completed, even if we need to borrow funds. However, all indications suggest that we will receive strong support from our members, leading to a successful campaign!

**2. How much contingency is built into the budget? Is now the best time to launch a capital campaign given the volatile economy?**

The sanctuary project is the most complex aspect of the campaign, and our cost estimates include approximately 25% in design and cost escalation contingencies. The Life Safety project has roughly 20% in similar contingencies, while the Memorial Garden has smaller contingencies, and our StepUp contribution is a fixed amount. Despite recent economic volatility, this is the right time to plan these projects as we face a critical intersection of necessity and responsibility, and we must continue to be good stewards of all that God has given us.

**3. Why are we having another campaign so soon after the Imagine Campaign?**

The *Imagine Campaign* began over ten years ago, and none of the components of this new campaign were addressed at that time. Our aging facilities are in urgent need of restoration, renewal, and, in some cases, repair. The last major renovation of the sanctuary occurred 39 years ago. Additionally, the Luther and Knox buildings need significant upgrades to ensure safety and accessibility for our children. We are running out of space in our Memorial Garden, and the StepUp facility is severely inadequate and in disrepair.

**4. What happens if we raise more funds than needed?**

Any additional funds received from gifts to this campaign will be used for ongoing maintenance needs.

**5. Could these updates lead to higher upkeep costs in the future? How will these updates save us money over time?**

We believe that upgrades to electrical systems, HVAC, and other equipment, along with painting and repairs, will result in savings on the current costs of maintaining these aging components.

## SANCTUARY

1. **Why is a screen necessary, and how will it be used?**  
**How will we maintain the sanctity of the sanctuary?**

The sanctuary is, and will always remain, a sacred space. Preserving its sanctity was a top priority for committee members when they discussed our needs. None of the components of this campaign will alter the sanctity of our worship space or the traditional style of worship. The pastors anticipate using the video capabilities to emphasize sermons or display images related to the topics. The screen will also be utilized during children's programs, by outside speakers, for choir rehearsals, educational forums, and congregation meetings.

2. **Why are chairs more beneficial than pews?**

Chairs offer flexibility, as they can be removed, relocated, and arranged to face the congregation as needed. This adaptability will enhance large choral and orchestra performances, weddings, special events, weekday/ children's programming, and more.

## LIFE & SAFETY

1. **Why was the sprinkler and accessibility project deferred for so long?**

These spaces had been grandfathered from more recent building codes regarding safety and accessibility concerns. Additionally, the costs involved were always a significant

issue. These Life Safety projects represent the intersection of necessity and responsibility.

## MEMORIAL GARDEN

1. **How will we create the Memorial Garden without losing any parking spaces?**

While the parking lot closest to Davidson Chapel will be used for the new Memorial Garden, there is sufficient grassy median space on the opposite side to avoid losing any parking spots.

2. **When will we be able to start reserving space in the Memorial Garden?**

In keeping with our current policy, we do not allow individuals to reserve space in our Memorial Garden.

## STEPUP MINISTRY

### 1. What if StepUp does not meet its fundraising goals?

StepUp has several major donors, including WMPC, that have jointly pledged \$2.5 million, which is approximately 50% of the expected cost. All indications suggest they will have a successful campaign, as they have a strong individual donor base and are also able to seek corporate donors. The ultimate size and cost of the new facility will depend on the success of their campaign.

### 2. What is the relationship between WMPC and StepUp? Will it continue?

We have enjoyed a wonderful relationship with StepUp for over 35 years and expect it to continue for generations to come. StepUp is our primary ministry partner with well-defined mutual community service goals and expectations.

### 3. Will I be approached by both WMPC and StepUp for donations? If WMPC is contributing to StepUp, should I refrain from supporting StepUp?

These are separate campaigns. Many of our members are long-time supporters of StepUp, and we expect that they will continue to give directly to StepUp while also participating in the benevolence portion of our Four Pillars of Promise campaign.



## CAMPAIGN CABINET CO-CHAIRS

Andy Betts

Leila Thomas

Gretchen Hyde

Mike Condrey

## CAMPAIGN CABINET MEMBERS

Chester Allen

Dalton Hunt

Stephen Riddick

Scott Anderson

Scott Manning

Katie Schottmiller

Bill Baker

Robin McCarthy

Jim Scott

Vic Bell

Austen Nowell

Gail Smith

Laura Clark

Mabel Pace

Jared Smith

Debbie Fox

Laura Raynor

Carol Vassey

Gray Glover

Elizabeth Riddick

Questions? Contact Campaign Coordinator Lindsay Dew at [ldew@whitememorial.org](mailto:ldew@whitememorial.org) or 919-834-3425, ext. 270.

*For every house is built by someone, but the builder of all things is God.*  
- Hebrews 3:4





WHITE MEMORIAL  
— PRESBYTERIAN CHURCH —

1704 OBERLIN ROAD | RALEIGH NC | 27608

WHITEMEMORIAL.ORG