

WHITE MEMORIAL PRESBYTERIAN CHURCH

SERVICE FOR THE SEVENTEENTH SUNDAY AFTER PENTECOST | WORLD COMMUNION SUNDAY
October 5, 2025 | 9:30 & 11:00 a.m.

WE GATHER TO WORSHIP

The sound of bells summons us to gather for worship.



The Bread of Life by Hermel Alejandre,
©2011

Preparation for Worship

adapted from *PC(USA) Swords into Plowshares*

Triune God, as we gather in worship on this *World Communion Sunday*, we ask that you send your Holy Spirit to fall afresh on us. We pray for your Spirit to awaken new hope in us. Grant us the vision to see the coming of your kingdom. Help us celebrate the glimpses of grace that you have given to each of us. Knit our hearts together in worship and communion so that we know we do not struggle alone in working for your peace and justice. We pray this in the name of your Son, Jesus Christ. Amen.

Call to Worship

Come, let us worship God.
Welcome, everyone, to the love of God.
Food for the hungry...
Hope for the children...
Rest for the weary.

Youth Choir (9:30)
Children's Choirs (11:00)

*Hymn 65 Guide Me, O Thou Great Jehovah

CWM RHONDDA

*Confession and Pardon

Judy Yates Siker

**Triune God, you offer us expansive love.
You invite us into the breadth, length,
height and depth of the love of Christ.
But all too often, we settle for what is shallow and surface.
You offer us the bread of life,
and we give you and one another crumbs.**

**Yours is a uniting love that is full,
and yet we are divided and fragmented.
Take our broken pieces, O God—
the parts of us that are sad, warring, angry and judging—
our most human parts and make us whole.
Help us to be generous and expansive with our love.
In the name of Jesus Christ, unite us with all your people.**

Silence for personal confession

*Hymn 582 Glory to God, Whose Goodness Shines on Me

GLORY TO GOD

* Asterisks invite us
to rise in body or spirit.

Words in bold are for
everyone to say or sing.

The first Sunday in October is designated as *World Communion Sunday*, which celebrates our oneness in Christ with all our siblings around the world. Celebration of *World Communion Sunday* was adopted as a denominational practice in the Presbyterian Church (US) in 1936 and then spread to the larger ecumenical church in 1940. Since then, World Communion Sunday has grown into an international ecumenical celebration of Christian unity.

Today we celebrate the Lord's Supper by intinction. If you prefer pre-packaged elements, please pick these up in the narthex or Jane Bell Gathering Space prior to the service.

A gathering song helps invite us to worship and to the table. It is followed by a hymn of deep roots—a prayer for God's guidance, a trust in God's provision, and a culminating word of praise.

WORSHIP | EMBRACE | SERVE

in the manner of Christ

***Peace**

The peace of Christ be with you all.
And also with you.

Christian Welcome and Announcements

Please pass the Friendship Register to your neighbor and include all requested information.

WE PROCLAIM GOD'S WORD

Prayer for Illumination

Psalm 145:9-18

Adapted from Psalm 145

Lord, you are good to all,
and your compassion is over all your works.
**All your works shall praise you, O Lord,
and your faithful ones shall bless you.**
They shall tell of the glory of your kingdom
and speak of your power,
**that all people may know of your power
and the glorious splendor of your kingdom.**
You, Lord, are faithful in all your words,
and loving in all your works.
**The Lord upholds all those who fall
and lifts up those who are bowed down.**
The eyes of all wait upon you, O Lord,
and you give them their food in due season.
**You open wide your hand
and satisfy the desire of every living thing.**
You are righteous in all your ways
and loving in all your works.
**You are near to all who call upon you,
to all who call upon you faithfully.**

First Reading Ephesians 3:14-21

pew Bible p. 182

Second Reading John 6:35-51

pew Bible p. 92

The word of God for the people of God.
Thanks be to God.

Sermon Bread of Life

Cate Church Norman

***Affirmation**

adapted from *the Confession of Belhar*

Jim Ferry

**We believe in one holy, universal Christian church,
and in the unity of the communion of saints
of the entire human family.
We believe that this unity of the people of God
must be manifest and active,
in that we love one another;
that we give ourselves willingly and joyfully to one another;
that we share one baptism together;
that we eat of one bread and drink of one cup together;
that we confess one name, one Lord,
for one cause, with one hope,
which is the height and the breadth and the depth
and the love of Christ, forever and ever. Amen.**

Our Affirmation of Faith today is adapted from the *Confession of Belhar* from South Africa and was included in the *Book of Confessions* of the PC(USA) in 2016. It is our 12th recognized confession and the first to originate from the global south. It was written during the struggle against apartheid and seeks to give language and theology around reconciliation and forgiveness. It has a real focus upon "oneness" in Christ which you will hear in our selection today.

WE SHARE THE LORD'S SUPPER

Offering

The eyes of all wait upon thee,
and thou givest them their food in due season.
Thou openest thine hand
and satisfiest the desire of every living thing.

Jean Berger, composer

This haunting anthem carries words from Psalm 145; God's people await the sure provisions of the feast. Answering is a hymn by Billema Kwillia: its call-and-response singing brings us to the table.

Invitation

from Hymn 528

Come, let us eat for now the feast is spread!
Come, let us eat for now the feast is spread!
In the presence of our Lord we gather;
in the presence of our Lord we gather.

Come, let us worship God!
Come, let us worship God!
Come, let us worship God!
Come, let us worship God!
Welcome everyone,
Welcome everyone,
to the love of God,
to the love of God,
to the love of God.
to the love of God.

Great Thanksgiving

The Lord be with you.
And also with you.
Lift up your hearts.
We lift them to the Lord.
Let us give thanks to the Lord our God.
It is right to give our thanks and praise.

As we celebrate World Communion today, notice that the Words of Institution are being spoken in Greek and Japanese.

Breaking, Pouring, and Serving

Today we receive communion by intinction. You are invited to come to stations at the front or the rear to receive the bread and then to dip it in the cup. All bread is gluten-free, and all cups contain grape juice.

Prayer after Communion & Lord's Prayer

**Our Father, who art in heaven, hallowed be thy name,
thy kingdom come, thy will be done, on earth as it is in heaven.
Give us this day our daily bread; and forgive us our debts,
as we forgive our debtors; and lead us not into temptation,
but deliver us from evil.
For thine is the kingdom and the power and the glory, forever. Amen.**

The prayer for guidance at the beginning of worship is answered by a song of gentle confidence—"I can journey on."

WE GO IN GOD'S NAME

*Hymn 831 I Depend upon Your Faithfulness
Sung in English, then Spanish

TU FIDELIDAD

*Charge & Benediction

*Chiming of the Trinity

*Postlude Guide Me, O Thou Great Jehovah

arr. Paul Manz

Music in today's service presented with permission under Podcast/Streaming License with
OneLicense number #714069



[Scan or click here to submit a prayer request.](#)

AFTER HOURS PASTOR ON CALL: 919-605-4593

Each Sunday we offer three opportunities for you to worship with us at White Memorial in the Sanctuary and OnPoint@1704 in the Main Hall. While you will notice differences in music, location, and worship leadership among our different services, what unites us in our worship is our scripture, liturgy, and sermon. All services use the same Call to Worship, Prayer of Confession, readings from Scripture, and Affirmation of Faith.



WELCOME TO WHITE MEMORIAL
PRESBYTERIAN CHURCH, PC (USA)

We're so glad you are
worshiping with us today.

Visiting?

Deacons are in the Narthex
to offer a friendly greeting,
answer questions, and provide
directions.

Looking to Become a Member?

New members are received
after attending the *Believing &
Belonging @WMPC* class.
Visit whitememorial.org/join or
contact Elizabeth Viohl at
ext. 206 for class dates,
registration, and details.

Things to Know

Restrooms

Hallway to Jane Bell Gathering
Space (Pulpit side) and first floor
of the Luther Building.

Childcare

Available for children
up to 4 years old.

Sunday School

9:30 a.m. for all ages.

Refreshments & Coffee

The Connector and Main Hall.

Hearing Assistance

Loop system and FM system
available in the Sanctuary.

AED/Narcan Locations

WMPC campus has five AED/
Narcan locations around
campus: Narthex- Sanctuary,
Main Hall-Edinburgh,
Lobby-Ross, Lobby-Calvin,
3rd floor-Luther

Live Streaming

Services available at
whitememorial.org.
Facebook & YouTube

Bulletins

Recycled after services as part
of our care for God's creation.



Jays & CONCERNS

NEW PRESBYTERIANS

Hanora Lucille Coleman, September 10, child of Jessica and Win Coleman,
grandchild of Kay and Eddie Coleman, great-grandchild of Ann Thompson

If you have experienced a birth, marriage or death you want to share with the church,
email Lisa Crumpler at lcrumpler@whitememorial.org

If you have a relative or church friend who is hospitalized,
call the Pastoral Care line 919-834-3425, ext. 210 or email Caroline Parker
at cparker@whitememorial.org so our pastoral staff can reach out.

If you have a pastoral care need outside of regular business hours,
call our after-hours pastor on call at 919-605-4593.



BEYOND SUNDAY @WMPC

This season, our Beyond Sunday at WMPC podcast is launching a new series called *...Ready For It?* where conversations about faith and Presbyterian theology meet their match in Taylor Swift's songbook. The second episode "State of Grace" with Grier Booker Richards and Jeb Jeutter drops Monday, October 6. Look for it on our website, Spotify or Apple Podcasts.

IT'S NOT TOO EARLY TO THINK ABOUT ADVENT

Would you and your family or group like to participate in the tradition of Advent reading and lighting of the candles this year? We are looking for families and groups that would read a short passage and light the Advent calendar at one service during the Advent season. Contact Jesse Maynard to get more info!
Jesmaynard@gmail.com

NEW Hospitality Team Open House

WELCOME

Sunday, October 26
in Jane Bell Gathering Space

Drop in after any worship service!

NEW HOSPITALITY TEAM OPEN HOUSE

WMPC is forming a new Hospitality Team that is tasked with fostering an atmosphere of welcome on Sunday mornings by serving as greeters for worship. Come to our Open House after any worship service on October 26 to enjoy some refreshments and learn more. Serving on the Hospitality Team is an easy, low commitment level way for people of all ages to serve our church family and meet new people. Questions? Contact Anne Galliher at agalliher@whitememorial.org

BLESSING OF THE ANIMALS

Sunday October 5 | 5:00 - 6:00 p.m | Carol
Copeland Courtyard

Let's worship God together and give thanks for our companion animals through song and prayer. A brief meditation will be offered, our pets and animals will receive a special blessing, and we will have time to honor those pets who are no longer with us. Supplies like food, litter, toys, etc. will be collected for the SPCA of Wake County.

A Snapshot of What's Happening This Week at WMPC

Sunday, October 5

Ephesians 3:14-21, John 6:35-51

- **Baptism & Belonging**
9:30 a.m. | R400
- **Blessing of the Animals**
5:00 p.m. | Carol Copeland Courtyard

Monday, October 6

Psalm 137; Lamentations 1:16-22

- **Bridge With Friends**
1:00 p.m. | The Hub
- **Pickleball**
2:00 p.m. | Pickard Hall
- **Tai Chi**
5:30 p.m. | Pickard Hall

Tuesday, October 7

Psalm 137; Lamentations 2:13-22

- **Men's Breakfast/Bible Study**
7:00 a.m. | Geneva Hall
- **Women's Breakfast/Circle M**
7:00 a.m. | The Connector
- **Gentle Yoga**
8:30 a.m. | C200
- **Outreach Knitting Group**
9:30 a.m. | R400
- **30s/40s Men's Gathering**
7:00 p.m. | Raleigh Brewing

Wednesday, October 8

Psalm 137; Lamentations 5:1-22

- **Chair Yoga**
10:00 a.m. | C200
- **Lectio Divina**
11:00 a.m. | Virtual
- **Yin Yoga**
11:15 a.m. | C200
- **Note in the Pocket**
1:30 p.m. | Offsite
- **Pickleball**
2:00 p.m. | Pickard Hall
- **Wednesday Together Dinner**
5:00-6:30 p.m. | Main Hall

Engagement and Faith Fellowship

30s + 40s MEN'S GROUP FIRST GATHERING

Tuesday | October 7 | 7:00 p.m. | Raleigh Brewing

Looking for connection, conversation, and community? A new men's group for those in their 30s/40s is kicking off, and you're invited to be part of it. We'll gather at Raleigh Brewing for a relaxed evening of fellowship, getting to know one another, and talking about what this group might look like moving forward. Bring a friend, grab a drink, and join us as we start something new together. For more information contact Anne Galliher at agalliher@whitememorial.org.

20s + 30s WOMEN'S BOOK CLUB

Are you in your 20s + 30s? Consider joining the Women's Book Club which meets offsite on Tuesday October 14 & 28 and November 11 at 7:00 p.m. At our first gathering we begin reading *Inspired* by Rachel Held Evans. Questions? Contact Anne Galliher at agalliher@whitememorial.org.

JESUS ENCOUNTERS BOOK CLUB

Join Pastoral Resident Lee Hunter and the "Jesus Encounters Book Club" as they read *Back to the Well* by Frances Taylor Gench. This group meets on the third Thursday of the month at 2:30 p.m. in R400. Our first meeting will be October 16. Come join us either in person or by Zoom. If you'd like to know more, contact Lee at lhunter@whitememorial.org.

CATALYST FOR CHANGE WITH DAVID LAMOTTE

Saturday | October 11 | Main Hall

Workshop 3:00 - 5:00 p.m. (\$50.00) | Concert 7:00 p.m. (\$20.00)

Combo Ticket (\$65.00)

Join singer-songwriter, author, and peace leader David LaMotte for an inspiring workshop and concert presented by the NC Institute for Spiritual Direction and Formation. Through music and reflection, LaMotte invites us to cultivate peace and become catalysts for community and harmony. A Rotary World Peace Fellow, TEDx speaker, and veteran of 3,500 concerts worldwide, he brings a powerful blend of story, song, and vision for change.

Register: ncisdf.org/catalyst-for-change-registration



GREENSBORO AFRICAN-AMERICAN HISTORY PILGRIMAGE

Saturday | October 18

Registration: \$20 (plus lunch cost)

Join us for a powerful pilgrimage to the International Civil Rights Center & Museum in Greensboro, NC—the historic site of the

1960 Greensboro sit-ins.

We'll gather in the Carol Copeland Courtyard at 8:15 a.m., then travel together for a 90-minute guided tour beginning at 10:00 a.m., followed by lunch and time for reflection. This experience is more than a museum visit. As we walk through the story of the courageous young men and women who stood against injustice with faith and dignity, we'll also reflect on our own calling to seek justice, walk in solidarity, and love our neighbors.

Please note: This is a walking pilgrimage, so dress comfortably. Participation is limited to the first 30 registrants—sign up today!

Register: whitememorial.org/register

Join Us
for

ANDREW SORDS, VIOLIN & ERIKO IZUMIDA, PIANO ROMANCE OF THE VIOLIN

WORKS OF BEETHOVEN, RACHMANINOFF, CHOPIN, AND SARASATE

Sunday | October 12 | 2025
Sanctuary | 3:00 pm



Violinist Andrew Sords and pianist Eriko Izumida will present Romance of the Violin on Sunday, October 12, at 3:00 p.m. in the Sanctuary, featuring works by Beethoven, Rachmaninoff, Chopin, and Sarasate. A reception will follow in the Jane Bell Gathering Space. Admission is free, with donations to support future concerts warmly welcomed.



A Snapshot of What's Happening This Week at WMPC

Thursday, October 9

Psalm 66:1-12; Jeremiah 25:1-14

- **Keenagers**
10:45 a.m. | Geneva Hall
- **Healing Prayer**
1:30 p.m. | Chapel
- **Note in the Pocket**
1:30 p.m. | Offsite

Friday, October 10

Psalm 66:1-12; Jeremiah 27:1-22

- **Pickleball**
2:00 p.m. | Pickard Hall

Saturday, October 11

Psalm 66:1-12; Jeremiah 28:1-17

- **Middle School Cross Mission Trip**
All day | Charlotte
- **Catalyst for Change with David LaMotte**
Workshop | 3:00 p.m. | Main Hall
Concert | 7:00 p.m. | Main Hall

For more information about any of these events, please visit our website whitememorial.org or call the church office 919-834-3424.

Christopher Edmonston, Pastor
Cynthia Baggett, Director of Weekday School
Genevieve Brooks, Director of Family Ministry
Cate Church Norman, Associate Pastor for Pastoral Care
Claire Cox-Woodlief, Executive Director
Brock Downward, Director of Music Emeritus
Jennifer Eastman, Director of Young Children's Ministry
Jim Ferry, Parish Associate
Anne Galliher, Associate Pastor for
Congregational Engagement
Kelly Gold, Director of Children's and Youth Music
Tom Harris, Parish Associate
Martha Grove Hipskind, Health Ministry Coordinator
Kathy Howell, Communications Director
Lee Hunter, Pastoral Resident
Bailey Morton, Director of Youth Ministry
Eric Nanz, Associate Director of Music and Worship Arts
Linda Nunnallee, Director of Community Engagement
Grier Booker Richards, Associate Pastor for
Faith Formation and Worship Ministries
Art Ross, Pastor Emeritus
Judy Yates Siker, Parish Associate
Lynn Springfield, Director of Elementary Ministry
Colisha C. Stanford, StepUp Director
Martha Stevenson, Educator Emerita
Eric Wall, Director of Music



We are a Stephen Ministry congregation.

Congregational Care + Health

CAREGIVER'S COFFEE

Tuesday | October 14 | 10:30 a.m. - noon | The Hub

Are you a family caregiver or would you like to fellowship with family caregivers? Are you interested in learning more about the many community resources available to you? If so, please come for coffee, conversation, and connection at our next Caregiver's Coffee on Tuesday, October 14 from 10:30 a.m. - noon in the Hub. All are welcome; please feel free to invite a friend or neighbor to join you. Questions, please contact Health Ministry Coordinator Martha Grove Hipskind at mghipskind@whitememorial.org.

SPIRITUALITY & HEALTH

Wednesday | October 15 | 6:30 - 8:00 p.m. | K200

Wednesday | October 29 | 6:30 - 8:00 p.m. | K200

WMPC's Health Ministry and Mental Health and Wellness invite you to join them for Spirituality and Health, a two-part series designed to extend the themes of connecting and belonging developed by Dr. Warren Kinghorn during his March program.

We will meet from 6:30 - 8:00 p.m. in K200 on Wednesday, October 15 and October 29. Plan now to join us for practical hands-on ways to improve our physical and mental well-being. [Registration is required](#). Questions, please contact Martha Grove Hipskind at mghipskind@whitememorial.org.

Outreach

OUTREACH KNITTING GROUP

Gather around and enjoy fellowship and friends while knitting and crocheting the first Tuesday of each month at 9:30 a.m. in R400. Everyone is welcome to join us for coffee and lots of conversation. Any questions call Faye Senter, 919-805-0897 or fsenter@bellsouth.net.

MAKE A DIFFERENCE - JOIN THE COMMUNITY ALLOCATIONS COMMITTEE!

Want to see your generosity in action? Each year, WMPC invites local agencies to apply for grants that strengthen our community. From January through April, the Allocations Committee dives in—reviewing applications, meeting with agency leaders, making site visits, and prayerfully deciding how to best invest the church's funds. Your voice can help shape the impact we make together. Ready to serve? Email Ruth Landers at ruth@landers.me to join the committee!

STEPUP MINISTRY SERVICE OPPORTUNITIES

Costumes for Harvest Festival

StepUp Ministry is collecting new and gently used Halloween costumes, sizes: 12 months through 5T, and Size 6 through child XL Any gender! **Items Due October 7, 2025.**

Co-Partner Info Session

Two hours a week. A lifetime of impact! Learn more about becoming a StepUp Co-Partner by joining us on **Tuesday, October 28 from 6:00-8:00 p.m. in Main Hall.**

Coats for the Coat Drive

StepUp Ministry is seeking coats for 75 children/teens in various sizes, starting at 18 months through adult XL. **Items Due December 10, 2025.** For more information contact Dayna Jameson, djameson@stepupministry.org

HABITAT FOR HUMANITY SITE CONSTRUCTION FALL VOLUNTEER OPPORTUNITIES

White Memorial is excited to join faith communities in building homes with Habitat for Humanity. While volunteers are welcome most Saturdays, these are the days when WMPC will serve together:

Saturday, October 18 – Old Poole Place, Raleigh

Saturday, December 13 – A New Neighborhood, Garner

Arrive at 8:15 a.m., take water breaks as needed, enjoy lunch together, and work until about 3:00 p.m.—or as long as you are able. Questions? Contact Eric Miller at eric_miller@ncsu.edu. Register here: whitememorial.org/event.

BACKPACK BUDDIES

Churchwide Collection

Each week when school is in session, our church provides food-insecure children at Oberlin Middle and Lynn Road Elementary Schools with healthy meals and snacks. Contact Jan Stewart, thestewarts2614@gmail.com. Amazon link on website.

NOTE IN THE POCKET

Wednesday, October 8 | 1:30 p.m. (offsite)

Thursday, October 9 | 1:30 p.m. (offsite)

Join fellow WMPC friends for a fun time sorting clothes to share with neighbors in need across Western North Carolina. Questions? Contact Sheri Miller at millerauktwo@gmail.com.

TRUNKERS NEEDED!

CANDY NEEDED!

TRUNK or TReAT



It's almost time for WMPC's annual Trunk or Treat Event! It's a wonderful time for fellowship, costumes and lots of candy! Speaking of candy, we welcome all donations. Drop off bags of candy in the Ross Lobby.

Wednesday, October 29 | 5:30-6:30 p.m.
Chapel Parking Lots & McDonald Lane

Register your trunk at www.whitememorial.org/register

PLEASE NOTE:

McDonald Lane will be closed for through traffic between 4 - 8 p.m. to make this a safe, fun event for everyone.
We encourage parking on Oberlin Road or the Dover Parking Lot.



WMPC Annual Women's Retreat

January 23-25, 2026

Wrightsville Beach, NC

"Early bird" registration now open!

[Register here](#)

WHERE DO YOU SEE THE FACE OF GOD?

WMPC is seeking examples of where you see the face of God. All congregants are invited to create an example via photography, collage, painting, drawing, watercolor, etc., or you can bring in an example you already own. If you would like a free canvas to use contact Eric Nanz at enanz@whitememorial.org. The deadline for submissions is Sunday, November 2nd.



Guide Me, O Thou Great Jehovah 65



1 Guide me, O thou great Je - ho - vah, pil - grim through this
 2 O - pen now the crys - tal foun - tain, whence the heal - ing
 3 When I tread the verge of Jer - dan, bid my anx - ious



bar - ren land. I am weak, but thou art might - y. Hold me
 stream doth flow. Let the fire and cloud - y pil - lar lead me
 fears sub - side. Death of death, and hell's de - struc - tion, land me



with thy power - ful hand. Bread of heav - en, bread of heav - en,
 all my jour - ney through. Strong de - liv - erer, strong de - liv - erer,
 safe on Ca - naan's side. Songs of pris - es, songs of pris - es



feed me till I want no more; feed me till I want no more.
 be thou still my strength and shield; be thou still my strength and shield.
 I will ev - er give to thee; I will ev - er give to thee.




Few Welsh hymns are as well known or loved as this 18th-century text that did not gain its popularity until the early 20th century. In both its original text, and in English translation, it is a stirring hymn of pilgrimage filled with vivid imagery from Hebrew Scripture.

582


Glory to God, Whose Goodness Shines on Me

Capo 3: (G) (D) (G) (D) (G) (D) (Em) (D)
B \flat F B \flat F B \flat F Gm F




1 Glo - ry to God, whose good - ness shines on me,
2 World with - out end, 7 with - out end. A - men.

(D) (G) (C) (G) (Em7) (A7)
F B \flat E \flat B \flat Gm7 C7




and to the Son, whose grace has par - doned me,
World with - out end, 7 with - out end. A - men.

(A7) (D) (F#) (Bm)
C7 F A Dm



and to the Spir - it, whose love has set me free.
World with - out end, 7 with - out end. A - men.

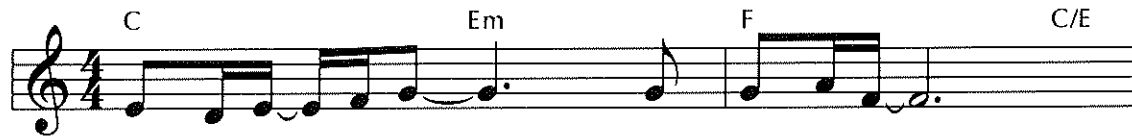
(Bm7) (D) (Bdim7) (Em7) (Dm)(A7) (D)
Dm7 F Ddim7 Gm7 Fm C7 F



As it was in the be - gin-ning, is now and ev - er shall be. A - men.

I Depend upon Your Faithfulness 831

Tu fidelidad



I de - pend up - on your faith - ful - ness.
 Tu fi - de - li - dad es gran - de,



I can jour - ney on, for you are al - ways there.
 tu fi - de - li - dad in - com - pa - ra - ble es.



None com - pares with you, O bless - ed One;
 Na - die co - mo tú, ben - di - to Dios.



O how great your faith - ful - ness.
 Gran - de tu fi - de - li - dad.

This short song's derivation from Lamentations 3:23 is somewhat more obvious in the original Spanish text than in the English version, so it is desirable to sing both languages whenever feasible. Like chants from Taizé, this piece benefits from being sung more than once.

TEXT: Miguel Cassina, 1994; English trans. Andrew Donaldson, 2001

MUSIC: Miguel Cassina, 1994; arr. Andrew Donaldson, 2008

Text, English Trans., and Music © 1994 Balsamo Producciones (admin. EMICMGPublishing.com)

TU FIDELIDAD
 Irregular