

# WHITE MEMORIAL PRESBYTERIAN CHURCH

SERVICE FOR CHRIST THE KING SUNDAY  
November 23, 2025 | 9:30 & 11:00 a.m.

## WE GATHER TO WORSHIP

The sound of bells summons us to gather for worship.

### Preparation for Worship

*Govern everything by your wisdom, O Lord, so that my soul may always be serving you in the way you will and not as I choose. Let me die to myself so that I may serve you; let me live to you who are life itself. Amen.*

### Prelude Adoration

Florence Price, composer

### \*Call to Worship

Lee Hunter

We see the light of grace in worship when we pray, sing, and praise.

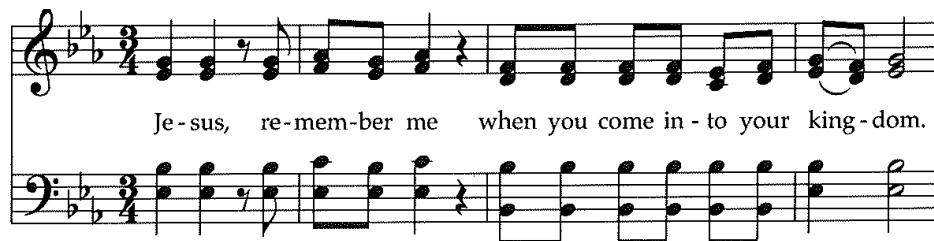
**In the name of God who creates life,**  
in the name of the Savior who loves life,  
**in the name of the Holy Spirit who is the fire of life:**  
**Let us praise the Lord, the light and fire of life this day!**

### \*Hymn 268 Crown Him with Many Crowns

DIADEMATA

### \*Confession and Pardon

chorus by Jacques Berthier



**Most merciful God, we confess that we have sinned against you and others in thought, word, and deed. Jesus Christ, your son is the king of grace and mercy. While we celebrate his reign as savior and intercessor, we still fail your law and righteousness. We often reduce the power of your grace. Help us to love you and our neighbors as ourselves. You ask us for our whole selves; but we usually give the minimum. Forgive our sin and call us repeatedly back to you; in the name of our Savior, Jesus the Christ.**

*Silence for personal confession*



*Christ Pantocrator, God the Son, as the Creator of the Universe, unknown artist, ca. 1226-1235*

\* Asterisks invite us to rise in body or spirit.

**Words in bold** are for everyone to say or sing.

The WMPC Brass Ensemble plays this transcription of an organ work by composer Florence Price (1887-1953). Price is one of several early twentieth-century African-American composers whose music is undergoing a long-overdue revival in popularity.

This grand hymn explores the sovereignty of Jesus Christ, whose power here is manifest in love and peace. The wonderful hymn tune, fittingly named DIADEMATA, has sturdy movement, an opening fanfare-like rhythm, and flowing melodic sweep—strength and grace combined.

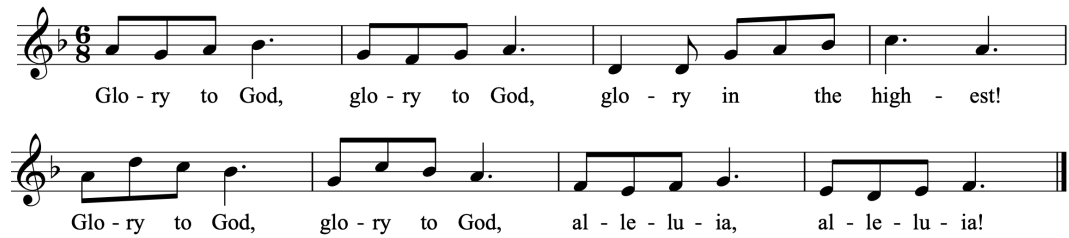
Two short choruses—“Jesus, Remember Me” and “Glory to God”—help carry our prayers of confession and thanks. These choruses come to us from the ecumenical French community of Taizé; like other Taizé songs, they are composed so that repeated singing brings deepened prayer.

WORSHIP | EMBRACE | SERVE

*in the manner of Christ*

**\*Response**

GLORIA (Taizé)



**\*Peace**

The peace of Christ be with you all.  
**And also with you.**

**Christian Welcome and Announcements**

*Please pass the Friendship Register to your neighbor and include all requested information.*

**Sacrament of Baptism**

*Young children are invited to come forward for the baptism. Following our time together, children will return to the pews for the remainder of the service.*

Miller Brooks Davis, daughter of Carson and Zack Davis (11:00)



**WE PROCLAIM GOD'S WORD**

**Prayer for Illumination**

Epistle Lesson Colossians 1:11-20

pew Bible p. 188

Psalm 46

New Testament Luke 23:33-43

pew Bible p. 83

The word of God for the people of God.  
**Thanks be to God.**

Sermon Lord of All

Christopher Edmonston

This vigorous spiritual is a hymn of Christ's kingship: a kingship that not only brings "sweet blessing" but breaks the oppressive structures and systems that hold people captive.

**WE RESPOND TO GOD'S WORD**

**\*Hymn 273** He Is King of Kings

HE IS KING

*refrain and responses sung by all  
stanzas sung by cantors*

**Our Father, who art in heaven, hallowed be thy name,  
thy kingdom come, thy will be done, on earth as it is in heaven.  
Give us this day our daily bread; and forgive us our debts,  
as we forgive our debtors; and lead us not into temptation,  
but deliver us from evil.  
For thine is the kingdom and the power and the glory, forever. Amen.**

Offering

song by Alberto Giacumbo/Pablo Sosa

Allí está Jesús, allí está Jesús hablando en el monte, en la campiña, cerca del mar, junto al templo. Si hablando no le creyeron, sus hechos lo lograrían.	Look closely and see: see, Jesus our friend is talking in the fields, on hills and mountains, beside the sea, or by the temple. If we doubt him, to hear him speaking, his deeds win our firm believing.
Jesucristo, con tus hechos diste vida a tus palabras. Jesucristo, con tu muerte diste al mundo nueva vida.	Brother Jesus, deeds of kindness give your words their holy power. Savior Jesus, dying for us you give life to all who love you.
Look closely and see: see, Jesus our friend is walking and beside him on the pathway go men and women and children. If his life meets with our denying, he conquers our hearts by dying.	

**Jesus, remember me when you come into your kingdom.  
Jesus, remember me when you come into your kingdom.**

This expressive song comes to us from Argentina—a *milonga lenta* song/dance style. Its slow, sensuous music gives a worldly weight to the text's description of Jesus' presence and power among us: a power that "conquers our hearts."

\*Affirmation of Faith

Apostles' Creed

**I believe in God,  
the Father Almighty,  
Maker of heaven and earth,  
and in Jesus Christ, his only Son, our Lord,  
who was conceived by the Holy Ghost,  
born of the virgin Mary,  
suffered under Pontius Pilate,  
was crucified, dead, and buried;  
he descended into hell;  
the third day he arose again from the dead;  
he ascended into heaven,  
and sitteth on the right hand  
of God the Father Almighty;  
from thence he shall come to judge the  
quick and the dead.  
I believe in the Holy Ghost;  
the holy catholic church;  
the communion of saints;  
the forgiveness of sins;  
the resurrection of the body;  
and the life everlasting.  
Amen.**

## WE GO IN GOD'S NAME

This twentieth-century carol is often heard at Christmas and Easter. It is a summation of the life, death, and resurrection of Jesus, just as Reign of Christ Sunday—the end of the church year—is a summation of the life and eternal rule of Jesus.

### \*Hymn 157 I Danced in the Morning

LORD OF THE DANCE

*stanzas sung by choir*  
*refrain sung by all*

### \*Charge & Benediction

### \*Chiming of the Trinity

### \*Postlude Canzon per Sonar Septimi Toni à 8, Ch. 172

Giovanni Gabrieli, composer

The flowers today are given to the Glory of God and in memory and celebration of the life of Elizabeth Aldridge Williams by her loving husband Randall Williams and family.

Music in today's service presented with permission under Podcast/Streaming License with One License number #A-714069

The Cornerstone: Generosity 2026

As of Wednesday, November 19 we have received 351 pledges representing \$2,372,678.53 million towards our goal of \$5.4 million/1,000 pledging households. If you would like to make a pledge please visit [whitememorial.org/give](http://whitememorial.org/give). Thank you so much for your generosity.



[Scan or click here to submit a prayer request.](#)

**AFTER HOURS PASTOR ON CALL: 919-605-4593**

Each Sunday we offer three opportunities for you to worship with us at White Memorial in the Sanctuary and OnPoint@1704 in the Main Hall. While you will notice differences in music, location, and worship leadership among our different services, what unites us in our worship is our scripture, liturgy, and sermon. All services use the same Call to Worship, Prayer of Confession, readings from Scripture, and Affirmation of Faith.



WELCOME TO WHITE MEMORIAL  
PRESBYTERIAN CHURCH, PC (USA)

We're so glad you are  
worshiping with us today.

#### Visiting?

Deacons are in the Narthex  
to offer a friendly greeting,  
answer questions, and provide  
directions.

#### Looking to Become a Member?

New members are received  
after attending the *Believing &  
Belonging @WMPC* class.  
Visit [whitememorial.org/join](http://whitememorial.org/join) or  
contact Elizabeth Viohl at  
ext. 206 for class dates,  
registration, and details.

#### Things to Know

##### Restrooms

Hallway to Jane Bell Gathering  
Space (Pulpit side) and first floor  
of the Luther Building.

##### Childcare

Available for children  
up to 4 years old.

##### Sunday School

9:30 a.m. for all ages.

##### Refreshments & Coffee

The Connector and Main Hall.

##### Hearing Assistance

Loop system and FM system  
available in the Sanctuary.

##### AED/Narcan Locations

WMPC campus has five AED/  
Narcan locations around  
campus: Narthex- Sanctuary,  
Main Hall-Edinburgh,  
Lobby-Ross, Lobby-Calvin,  
3rd floor-Luther

##### Live Streaming

Services available at  
[whitememorial.org](http://whitememorial.org).  
Facebook & YouTube

##### Bulletins

Recycled after services as part  
of our care for God's creation.



## Joy & CONCERNS

### IN THE CHURCH TRIUMPHANT

**Martha Lynn Williams Broughton,**  
**October 27, 2025**

WMPC family member: husband,  
Charles Broughton

**Janice Battey Williams, November 10, 2025**

WMPC family member: husband,  
Gary Williams

**Beaman Harris Scarboro, November 12,**  
**2025**

### PRAYERS AND CHRISTIAN CONCERNS TO

**Carol Lynn, Tom Lynn, Ashley Mense and  
their families** on the death of their sister,  
aunt and great-aunt, Mary Haley,  
November 11, Ware, MA

**Ann Wooten, Rachel Matthews and their  
families** on the death of their mother and  
grandmother, Margaret Siviter Emery,  
November 16, Charlotte, NC

**Kim Walker and family** on the death of  
mother, Linda Cunningham Taylor,  
November 16, Chester, VA

If you have experienced a birth, marriage or death you want to share with the church,  
email Lisa Crumpler at [lcumpler@whitememorial.org](mailto:lcumpler@whitememorial.org)

If you have a relative or church friend who is hospitalized,  
call the Pastoral Care line 919-834-3425, ext. 210 or email Caroline Parker  
at [cparker@whitememorial.org](mailto:cparker@whitememorial.org) so our pastoral staff can reach out.

If you have a pastoral care need outside of regular business hours,  
call our after-hours pastor on call at 919-605-4593.

### UNCLAIMED STOCK GIFTS

Will the generous donors of the following  
stocks please email or call Jody Grayson  
at 834-3425 ext. 204 to identify your gift  
so that we can give you proper credit?  
Allspring, Costco Wholesale Corp,  
American Express, Avidxchange Holdings,  
Norfolk Southern Corp, Apple Inc.

### PASTOR'S SPECIAL ASSISTANCE FUND & COMMUNITY SERVICE FUND

As we move through this season of  
gratitude and giving, please consider a gift  
to the Pastor's Special Assistance Fund.  
This fund provides help for members of our  
church family in times of need—whether  
that's for bills, healthcare, food, or other  
essentials. We also invite you to contribute  
to the Community Service Fund benefiting  
others in our community who have  
particular needs. Thank you for helping  
care for one another in such a tangible way.  
To make a contribution to this fund visit  
[whitememorial.org/give](http://whitememorial.org/give).

### HOSPITALITY ON CHRISTMAS EVE

Christmas Eve presents multiple  
opportunities to welcome people in the  
manner of Christ as we celebrate his birth.  
We need people to serve on the Hospitality  
Team (also known as ushering) to foster  
an atmosphere of welcome and to ensure  
worship services flow smoothly on a day  
with hundreds of people in attendance.  
These folks arrive early to hand out candles  
and bulletins and provide invaluable  
support to our staff. If you are available to  
serve at a worship service (3:00, 4:00, 5:30,  
7:00 p.m.) please contact Anne Galliher.

### LUTHER ELEVATOR TEMPORARILY OUT OF SERVICE

Please be advised that the Luther elevator  
is currently undergoing repairs and will be  
unavailable for the next couple of weeks.  
We apologize for any inconvenience this  
may cause and will provide an update as  
soon as it is back in operation. Thank you  
for your patience and understanding.

## A Snapshot of What's Happening This Week at WMPC

### Sunday, November 23

*Colossians 1:11-20; Luke 23:33-43*

- **Survivors of Suicide Loss Luncheon**  
12:15 p.m. | Geneva Hall
- **Healing Through Grief**  
4:00 p.m. | R400

### Monday, November 24

*Psalms 117; Jeremiah 30:1-17*

- **Bridge With Friends**  
1:00 p.m. | The Hub
- **Pickleball**  
2:00 p.m. | Pickard Hall
- **Tai Chi**  
5:30 p.m. | Pickard Hall
- **All Are Welcome**  
7:00 p.m. | Chapel

### Tuesday, November 25

*Psalms 117; Jeremiah 30:18-24*

- **Men's Breakfast/Bible Study**  
7:00 a.m. | Geneva Hall
- **Women's Breakfast/Circle**  
7:00 a.m. | The Connector
- **Gentle Yoga**  
8:30 a.m. | C200

### Wednesday, November 26

*Psalms 117; Jeremiah 31:1-6*

- **Chair Yoga**  
10:00 a.m. | C200
- **Lectio Divina**  
11:00 a.m. | Virtual
- **Yin Yoga**  
11:15 a.m. | C200
- **Pickleball**  
2:00 p.m. | Pickard Hall

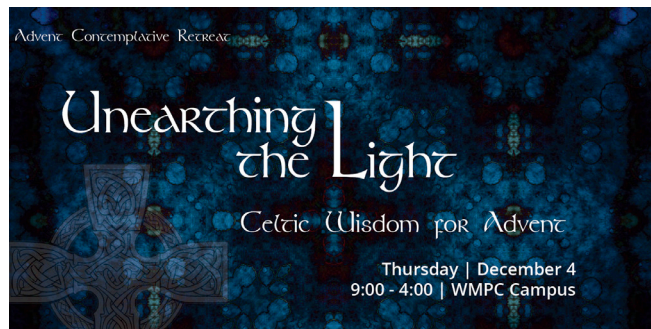
### HOLIDAY PIE PICK UP

Don't forget! If you ordered a pie(s) you can pick up in the kitchen between 10:00 a.m. and 3:00 p.m. on **Monday November 24**.

### ALL ARE WELCOME

**Monday | November 24 | 7:00 p.m. | Davidson Chapel**

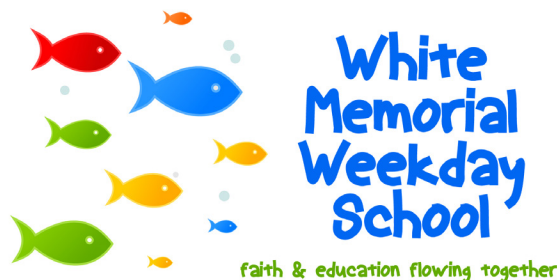
All Are Welcome is a faith-based small group that offers worship, fellowship and emotional and spiritual support for LGBTQ+ adults. You're invited to participate in the group as we create a safe space of welcome and engagement. We'll meet on the 4th Monday of every month. For more information, contact Kathy Hart at [hartmusic1@gmail.com](mailto:hartmusic1@gmail.com) or Lee Hunter at [lhunter@whitememorial.org](mailto:lhunter@whitememorial.org).



### ADVENT CONTEMPLATIVE RETREAT

**Thursday December 4 | 9:00 a.m. - 4:00 p.m. | WMPC**

Join Associate Pastor Cate Church Norman and Pastoral Resident Lee Hunter as we prepare for the season of Advent with an all-day contemplative retreat. We'll spend time on our church campus engaging in scripture, prayer, spiritual practices, and fellowship. Scholarships are available. Register: [whitememorial.org/register](http://whitememorial.org/register).



### Open House for Prospective Families

**Tuesday | December 9 | 9:30 a.m. | Davidson Chapel**

### WEEKDAY SCHOOL OPEN HOUSE

**Tuesday December 9 | 9:30 a.m. | Davidson Chapel**

Join us for the Weekday School Open House. It's a great opportunity to meet faculty, tour the facilities and get answers to any questions you may have. The open house is on Tuesday, December 9 at 9:30 a.m., beginning in Davidson Chapel. No registration necessary.

### ADVENT PODCAST SERIES DROPS MONDAY

The stories and songs of our faith remind us what we know, especially when the world feels uncertain. In the first of our 6-week episode series Associate Pastor Anne Galliher and Music Director Eric Wall will explore what it means to stay awake, to keep watch, and to live as people who trust in the light, even before it dawns. The first episode will be released Monday at 6:00 a.m. on our website, Spotify or Apple Podcasts.

## CHILDREN'S MOVIE NIGHT

**Sunday December 14 | 5:00 - 7:00 p.m. | Calvin 200**

Children in Kindergarten-3rd grade are invited to watch *The Star* from 5 – 7 p.m. in C200. Bring your sleeping bag or blanket and join us for movie night in Calvin 200! Pizza is \$6.00 per person. [Click here to register.](#)

## CLUB 4/5 MOVIE NIGHT

**Sunday December 14 | 5:00 - 7:00 p.m. | Calvin 100**

4th & 5th graders are invited to join us for Movie Night! On December 14 at 5:00 p.m., we'll watch *The Santa Clause*. Bring your sleeping bag or blanket and join us for movie night in Calvin 100! Pizza is \$6.00 per person. [Click here to register.](#)



**December 7 | 3:00 p.m.  
MAIN HALL**

**A WMPC family worship tradition.**

During the Joy Gift Worship Service, the Christmas Story will unfold through lessons and carols. Children, ages four through 5th grade will come forward to the WMPC Christmas tree with ornaments that were made in Sunday School and can place under the tree their gift of an unwrapped new toy or food for families during the offertory.

Music will be led by our Children's Choirs.  
Childcare is provided for children three and younger,  
beginning at 2:45 p.m.

2026 WOMEN'S RETREAT  
JANUARY 23-25  
WRIGHTSVILLE BEACH

*Beloved on the Earth:*

Being, Belonging, Becoming

with Rev. Gracie Payne  
Associate Pastor for Engagement  
Second Presbyterian Church, Indianapolis

Registration now open!  
[whitememorial.org/register](http://whitememorial.org/register)



## A Snapshot of What's Happening This Week at WMPC

**Thursday, November 27**

*Psalm 122; Daniel 9:15-19*

**WMPC facilities closed for Thanksgiving**

**Friday, November 28**

*Psalm 122; Genesis 6:1-10*

**WMPC facilities closed for Thanksgiving**

**Saturday, November 29**

*Psalm 122; Genesis 6:11-22*

**WMPC facilities closed for Thanksgiving**

For more information about any of these events,  
please visit our website [whitememorial.org](http://whitememorial.org) or  
call the church office 919-834-3424.

---

Christopher Edmonston, Pastor  
Cynthia Baggett, Director of Weekday School  
Genevieve Brooks, Director of Family Ministry  
Cate Church Norman, Associate Pastor for Pastoral Care  
Claire Cox-Woodlief, Executive Director  
Brock Downward, Director of Music Emeritus  
Jennifer Eastman, Director of Young Children's Ministry  
Jim Ferry, Parish Associate  
Anne Galliher, Associate Pastor for  
Congregational Engagement  
Kelly Gold, Director of Children's and Youth Music  
Tom Harris, Parish Associate  
Martha Grove Hipskind, Health Ministry Coordinator  
Kathy Howell, Communications Director  
Lee Hunter, Pastoral Resident  
Bailey Morton, Director of Youth Ministry  
Eric Nanz, Associate Director of Music and Worship Arts  
Linda Nunnallee, Director of Community Engagement  
Grier Booker Richards, Associate Pastor for  
Faith Formation and Worship Ministries  
Art Ross, Pastor Emeritus  
Judy Yates Siker, Parish Associate  
Lynn Springfield, Director of Elementary Ministry  
Colisha C. Stanford, StepUp Director  
Martha Stevenson, Educator Emerita  
Eric Wall, Director of Music



**We are a Stephen Ministry congregation.**

## Outreach

### SUNDAY OUTREACH SERVICE POP-UP

Sunday, December 7 | 10:15–11:00 a.m. |

#### Outside Main Hall

Join us as we assemble 250 Christmas Blessing Bags for our neighbors served at Shepherd's Table Soup Kitchen. All ages welcome!

### STEPUP MINISTRY COAT DRIVE

StepUp Ministry is seeking coats for 75 children/teens in various sizes, starting at 18 months through adult XL. **Items Due December 10, 2025.** For more information contact Dayna Jameson, [djameson@stepupministry.org](mailto:djameson@stepupministry.org)

### BACKPACK BUDDIES

#### Churchwide Collection

Each week when school is in session, our church provides food-insecure children at Oberlin Middle and Lynn Road Elementary Schools with healthy meals and snacks. Contact Jan Stewart, [thestewarts2614@gmail.com](mailto:thestewarts2614@gmail.com). Amazon link is on website.

### MAYVIEW ANGEL TREE

The Mayview Angel Tree is back! Trees are located in the Hub and outside the Main Hall—ready for you to help bring joy to our Mayview families this Christmas. Each gift you give offers warmth, hope, and love this holiday season.

- Please return **three wrapped gifts** to the **Ross Lobby by December 14.**
- Be sure to **attach the angel tag** from the tree to all packages or gift cards.
- Gift Card Angels should be returned to **Kristi Wilson's mailbox in the Ross Building.**

Let's make this season truly meaningful for our Mayview community!

### A PLACE AT THE TABLE

A Place at the Table is in search of dedicated volunteers to join their café team. Volunteers will be responsible for various tasks, including greeting guests, preparing food, and even assisting with dishwashing. There is something for everyone! The primary volunteer focus is to help foster a sense of love and support. Volunteers can commit to working once a week, every other week, or any other schedule that suits their availability. Flexibility is crucial in ensuring that the café can meet its operational needs effectively. Currently, they are in urgent need of additional hands to help them thrive.

### CHRISTMAS SHARE

Christmas Share, an alternative giving program, has made significant contributions to our community and international partners totaling more than one million dollars since its inception. Established over three decades ago by Presbyterian Women, it remains an important Christmas outreach initiative.

During Advent a table will be set up on Sunday mornings from 9:00 - 11:00 a.m. in the connector for you to make donations and to select your cards.

### ADVENT/CHRISTMAS MEMORIALS AND HONORARIA

We have a long-standing tradition of collecting contributions in memory of a loved one or in honor of family, friends, or members of the church family during Advent. Your gifts may be for any amount of \$25 or more, and the money raised enables us to provide the florals and greenery used in our worship spaces during Advent and Christmas, as well as throughout the year. Those honored or memorialized will be listed in the bulletin inserts on December 14 (deadline for print is December 10) and on Christmas Eve (deadline for print is December 18). Contact Lisa Crumpler at [lcrumpler@whitememorial.org](mailto:lcrumpler@whitememorial.org) for more information.

### SALVATION ARMY CHRISTMAS SERVICE OPPORTUNITIES

Help sort and distribute Angel Tree gifts at the Salvation Army Christmas Warehouse (1300 Buck Jones Road, Raleigh).

WMPC volunteer shifts:

**December 1 & December 9 | 1–4 p.m.**

10 WMPC members are already signed up—join us!

To volunteer on these dates, email Angela Farthing at [angelajim8578@att.net](mailto:angelajim8578@att.net).

### COOKIE SERVICE PROJECT FOR SHEPHERD'S TABLE SOUP KITCHEN

Attention Bakers! Help spread Christmas joy by sharing homemade festive cookies with the 250 guests served daily at Shepherd's Table. Package cookies in single-serving sized bags (bags available in the Ross Building lobby). **Drop off cookies December 14 & 15 in the Ross Building.** Details and sign-up available online: <https://tinyurl.com/shepherdstablecookies>. For more info, [email Jan Stewart](mailto:email@janstewart.org). Let's share the sweetness of the season!

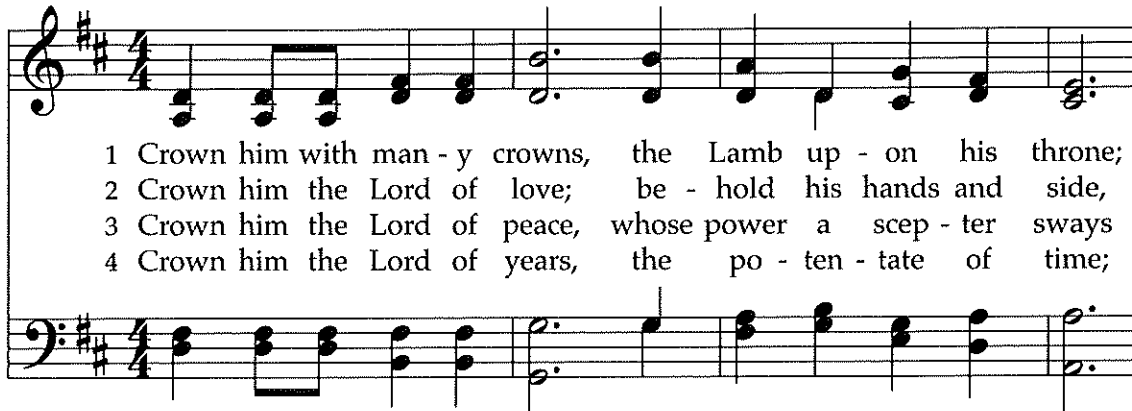


### RISE AGAINST HUNGER

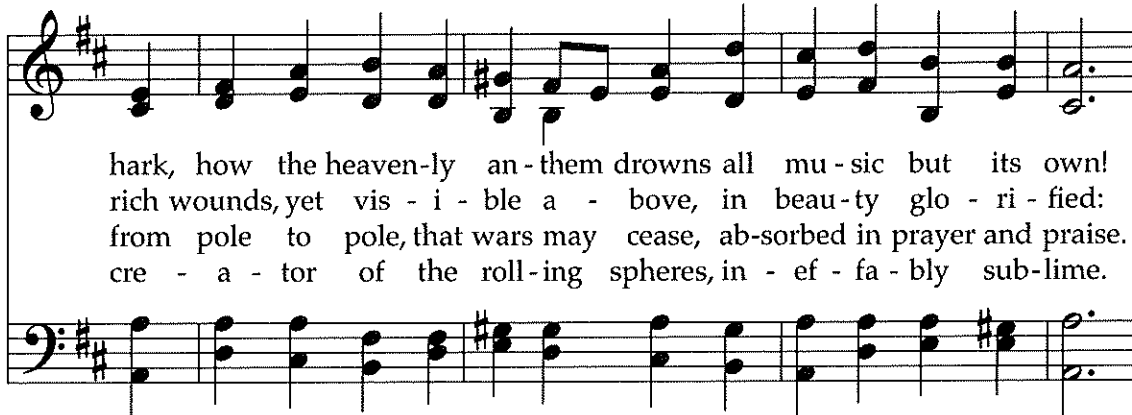
What a fun and meaningful morning we shared with our friends at Hayes Barton United Methodist Church! Together, we packed more than 10,000 meals for Rise Against Hunger on Saturday, November 15—and we did it in under an hour! The room was buzzing with energy as all generations jumped in to serve together. Fast-paced, joy-filled, and full of

teamwork—what a powerful way to make a difference!

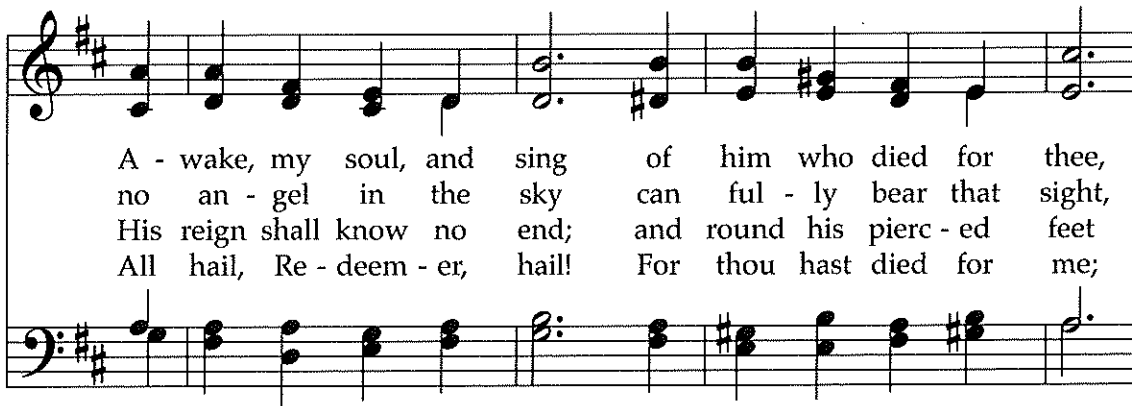
## Crown Him with Many Crowns 268



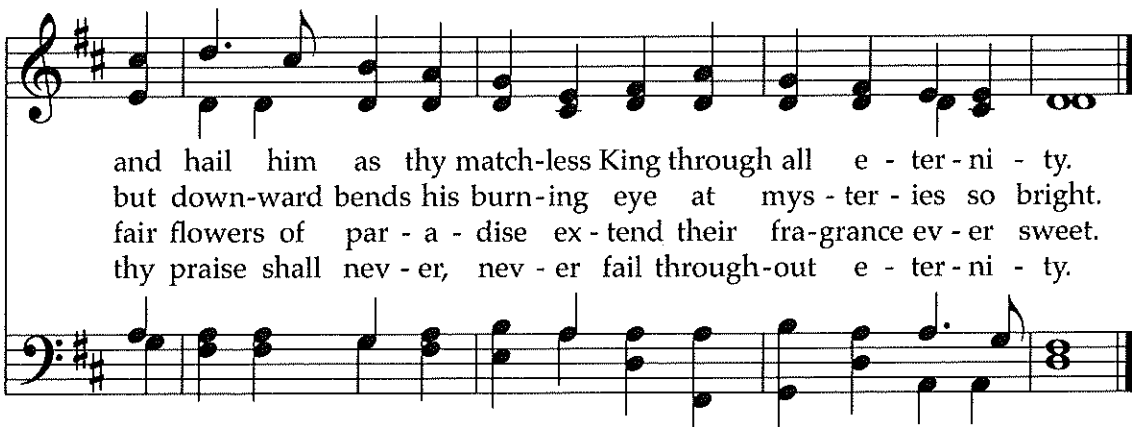
1 Crown him with man - y crowns, the Lamb up - on his throne;  
 2 Crown him the Lord of love; be - hold his hands and side,  
 3 Crown him the Lord of peace, whose power a scep - ter sways  
 4 Crown him the Lord of years, the po - ten - tate of time;



hark, how the heaven-ly an - them drowns all mu - sic but its own!  
 rich wounds, yet vis - i - ble a - bove, in beau - ty glo - ri - fied:  
 from pole to pole, that wars may cease, ab - sorbed in prayer and praise.  
 cre - a - tor of the roll - ing spheres, in - ef - fa - bly sub - lime.



A - wake, my soul, and sing of him who died for thee,  
 no an - gel in the sky can ful - ly bear that sight,  
 His reign shall know no end; and round his pierc - ed feet  
 All hail, Re - deem - er, hail! For thou hast died for me;



and hail him as thy match-less King through all e - ter - ni - ty.  
 but down-ward bends his burn-ing eye at mys - ter - ies so bright.  
 fair flowers of par - a - dise ex - tend their fra-grance ev - er sweet.  
 thy praise shall nev - er, nev - er fail through-out e - ter - ni - ty.

This text is so familiar that it is easy to miss all its paradox, mystery, suffering, and beauty; it rewards careful reading and meditation outside corporate worship. The tune's composer, chapel organist at Windsor Castle, had much experience in creating a royal sound.

# 273 He Is King of Kings

Refrain

He is King of kings; he is Lord of lords, Je - sus Christ, the

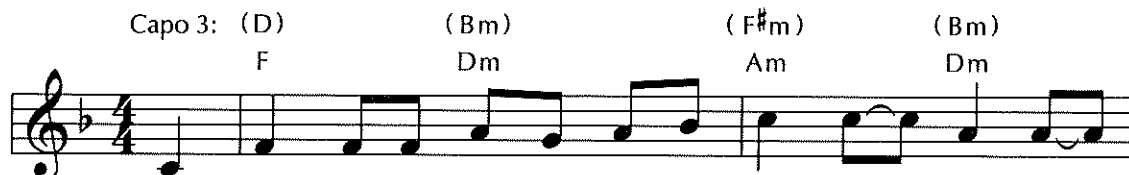
first and last, no one works like him. O he is no one works like him.

1 He built his throne up in the air; and  
2 He pitched his tents on Ca-naan ground; no one works like him; and  
3 I know that my Re-deem-er lives; and

called his saints from ev - ery - where;  
broke op - pres - sive king - doms down; no one works like him. O he is  
by his love sweet bless - ing gives;

This African American spiritual is a classic example of how praise of God rises out of human experience. The repeated response "no one works like him" shows confidence that the sovereign, liberating Christ abounds with the very attribute the singers need in order to survive.

## 157 I Danced in the Morning



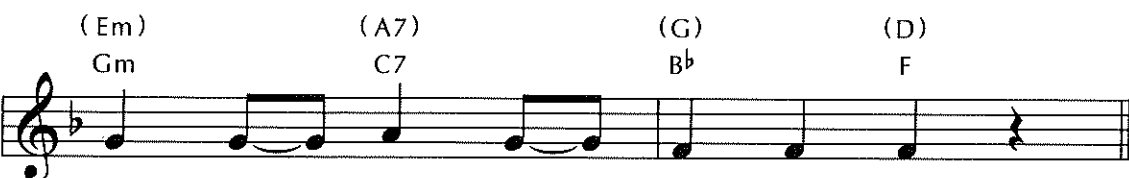
1 I danced in the morn-ing when the world was be-gun, and I  
 2 I danced for the scribe and the Phar - i - see, but  
 3 I danced on the Sab-bath and I cured the lame. The  
 4 I danced on a Fri - day when the sky turned black. It's  
 5 They cut me down and I leapt up high. †



danced in the moon and the stars and the sun, and I  
 they would not dance and they would not foll - ow me. I  
 ho - ly peo - ple said it was a shame. They  
 hard to dance with the dev - il on your back. They  
 I am the life that will nev - er, nev - er die. I'll



came down from heav - en and I danced on the earth. At  
 danced for the fish - er - men, for James and John. They  
 whipped and they stripped and they hung me high, and  
 bur - ied my bod - y and they thought I'd gone, but  
 live in you if you'll live in me, †



Beth - le - hem I had my birth.  
 came with me and the dance went on.  
 left me there on a cross to die.  
 I am the dance and I still go on.  
 I am the Lord of the Dance, said he.

This 20th-century ballad-like retelling of the life of Christ, though written for this Shaker tune, has many similarities with the pre-Reformation carol "Tomorrow shall be my dancing day." Such narrative carols were common both at Christmas and as part of medieval mystery plays.