

WHITE MEMORIAL

PRESBYTERIAN CHURCH

SERVICE FOR THE FIRST SUNDAY OF ADVENT
November 30, 2025 | 9:30 & 11:00 a.m.

WE GATHER TO WORSHIP

The sound of bells summons us to gather for worship.

Preparation for Worship

Almighty God, you have chosen us as your own and you give us new life in Christ. Fill us with his spirit of compassion and love, and may his peace always reign in our hearts. We ask this in his name and for his sake. Amen.

Opening

Isaiah 2 and Matthew 24

Sleepers, wake! A voice astounds us.
Steal away, steal away,
steal away to Jesus.
Steal away, steal away home—I ain't got long to stay here.
My Lord, he calls me, he calls me by the thunder.
The trumpet sounds within my soul—I ain't got long to stay here.

*Hymn O Come, O Come Emmanuel

VENI EMMANUEL

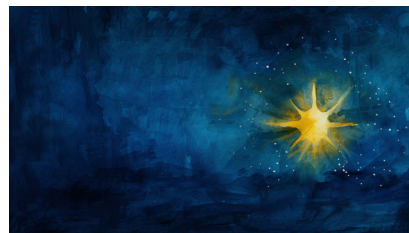


*Confession, Pardon, and Peace

Lee Hunter

Though we fail to learn God's ways
and to walk in God's paths,
this we know: God is our salvation.
Have faith and do not be afraid.

**O come, thou Dayspring, come and cheer
our spirits by thine Advent here;
disperse the gloomy clouds of night,
and death's dark shadows put to flight.
Rejoice, rejoice!
Emmanuel shall come to thee, O Israel.**



* Asterisks invite us
to rise in body or spirit.

Words in bold are for
everyone to say or sing.

Philipp Nicolai's 1599 hymn, "Sleepers, Wake!", is a heraldic vision of Christ's return. Its tune begins our Advent, inviting the great Negro spiritual, "Steal Away", to sing a wakened call: a signal, a light that moves us away from former things towards the liberating and real place where God dwells.

The great hymn, "O Come, O Come Emmanuel", has sounded the waiting days of Advent for centuries. Its prayer for new life undergirds Confession and Pardon.

WORSHIP | EMBRACE | SERVE

in the manner of Christ

Trusting in God's grace, we pray.

God of Light, this we know: you call us to learn the ways of Christ and to walk in his paths, yet we so often choose a different way. Rather than opening ourselves to the transforming power of the gospel and growing in spiritual maturity, we settle into that which is comfortable. You call us to stay awake, but we want to cover our eyes rather than seeing and confronting the hard realities before us. We have so often turned towards tools of destruction rather than taking up the tools of peacemaking. Forgive us, God. Wake us from the sleep of complacency and self-interest and send us forward to walk in your light.

Silent prayers

cantor: Lord, have mer - cy on us.

all: Lord, have mer - cy on us.

Give thanks and walk in light:
In the name of Jesus Christ, the one for whom we wait,
we are forgiven.
Thanks be to God.

The Cameroon song, "He Came Down," is a jubilant expression of the promise of God's love.

He came down that we may have love; he came down that we may have love; he came down that we may have love; hal-le-lu-jah for ev-er-more.

The Advent Wreath liturgy this year is taken from a children's worship project called *Child of Blessing*, an offering of the Presbyterian Association of Musicians. The wreath's illumination, long a symbol of waiting and marking time, also points us towards scripture: Isaiah's vision God's dwelling, the psalmist's joy at going up to that dwelling, and Jesus' description, in Matthew, of sudden divine arrival.

WE PROCLAIM GOD'S WORD

Illumination and Wreath

**People of God,
Live in hope.**

Old Testament Reading Isaiah 2:1-5

Children's choir (9:30)
8th Grade Confirmation class (11:00)

pew Bible p. 594

*Psalm 122

text by Adam Tice
tune: FOREST GREEN

Rejoice, rejoice, come sing with me, **this is the house of God!**
The temple gates swing wide and free, **this is the house of God!**
For every tribe and every race, **this is the house of God!**
God calls us to this holy place, **this is the house of God!**

In market square and city street, **we seek the peace of God.**
Before the ruler's judgment seat, **we seek the peace of God.**
In joyful song and whispered prayer, **we seek the peace of God.**
God's city can be anywhere **we seek the peace of God.**

New Testament Reading Matthew 24:36-44

pew Bible p. 26

The word of God for the people of God.
Thanks be to God.

Sermon On Wakefulness

Anne Galliher

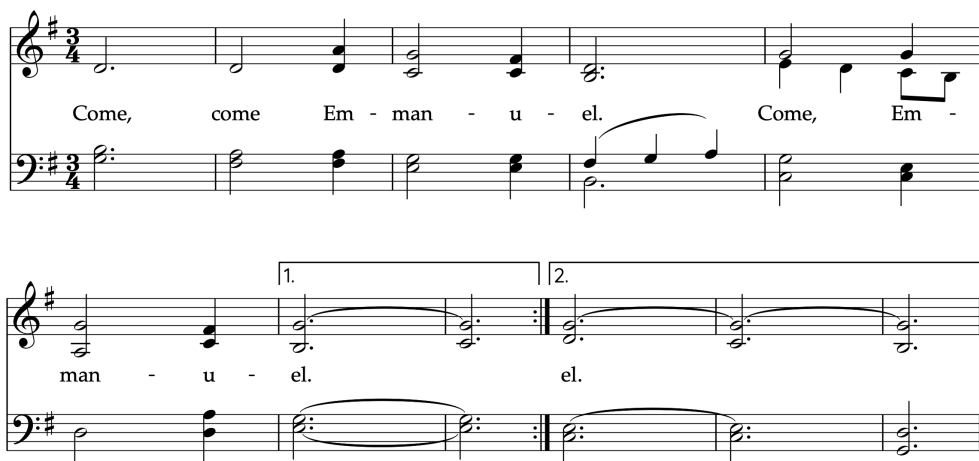
WE RESPOND TO GOD'S WORD

*Hymn 314 Longing for Light, We Wait in Darkness

CHRIST, BE OUR LIGHT

Prayers of the People and the Lord's Prayer

Genevieve Brooks



**Our Father, who art in heaven, hallowed be thy name,
thy kingdom come, thy will be done, on earth as it is in heaven.
Give us this day our daily bread; and forgive us our debts,
as we forgive our debtors; and lead us not into temptation,
but deliver us from evil.
For thine is the kingdom and the power and the glory, forever. Amen.**

Christian Welcome and Announcements

Please pass the Friendship Register to your neighbor and include all requested information.

Offering and Fifth Sunday Hunger Offering

Adolphus Hailstork, composer

Ye shall have a song,
and gladness of heart,
as ye walk the mountain of the Lord.

Then the Lord shall make his voice heard in majesty
and show the lightning of his arm.



Artwork is drawn by Oliver Harris, a third grader, as his interpretation of Matthew 24:38-44

This gentle chorus supports our prayers; it is found in *Glory to God* at Hymn 91.

This magnificent anthem by Adolphus Hailstork soars with Isaiah's vision of the mountain of God. Is its quiet ending an arrival there or a pause in the journey?

WE GO IN GOD'S NAME

*Affirmation of Faith

Iona Abbey Worship Book

**We believe that God is present
in the darkness before dawn;
in the waiting and uncertainty
where fear and courage join hands,
conflict and caring link arms
and the sun rises over barbed wire.
We believe in a with-us God
who sits down in our midst
to share our humanity.
We affirm a faith
that takes us beyond a safe place
into action, into vulnerability,
into the streets.
We commit ourselves to work for change
and put ourselves on the line;
to bear responsibility, to take risks,
live powerfully and face humiliation;
to stand with those on the edge;
to choose life
and be used by the Spirit
for God's new community of Hope. Amen.**

*Hymn 82 Come, Thou Long-Expected Jesus

HYFRYDOL

*Charge & Benediction

*Chiming of the Trinity

*Postlude Sleepers, Wake!

Paul Manz, composer

Music in today's service presented with permission under Podcast/Streaming License with One License number #A-714069

The Cornerstone: Generosity 2026

As of Monday, November 24 we have received 382 pledges representing \$2,497,435.00 million towards our goal of \$5.4 million/1,000 pledging households. If you would like to make a pledge please visit whitememorial.org/give. Thank you so much for your generosity.



[Scan or click here to submit a prayer request.](#)

AFTER HOURS PASTOR ON CALL: 919-605-4593

Each Sunday we offer three opportunities for you to worship with us at White Memorial in the Sanctuary and OnPoint@1704 in the Main Hall. While you will notice differences in music, location, and worship leadership among our different services, what unites us in our worship is our scripture, liturgy, and sermon. All services use the same Call to Worship, Prayer of Confession, readings from Scripture, and Affirmation of Faith.



WELCOME TO WHITE MEMORIAL
PRESBYTERIAN CHURCH, PC (USA)

We're so glad you are
worshiping with us today.

Visiting?

Deacons are in the Narthex
to offer a friendly greeting,
answer questions, and provide
directions.

Looking to Become a Member?

New members are received
after attending the *Believing &
Belonging @WMPC* class.
Visit whitememorial.org/join or
contact Elizabeth Viohl at
ext. 206 for class dates,
registration, and details.

Things to Know

Restrooms

Hallway to Jane Bell Gathering
Space (Pulpit side) and first floor
of the Luther Building.

Childcare

Available for children
up to 4 years old.

Sunday School

9:30 a.m. for all ages.

Refreshments & Coffee

The Connector and Main Hall.

Hearing Assistance

Loop system and FM system
available in the Sanctuary.

AED/Narcan Locations

WMPC campus has five AED/
Narcan locations around
campus: Narthex- Sanctuary,
Main Hall-Edinburgh,
Lobby-Ross, Lobby-Calvin,
3rd floor-Luther

Live Streaming

Services available at
whitememorial.org.
Facebook & YouTube

Bulletins

Recycled after services as part
of our care for God's creation.



PRAYERS AND CHRISTIAN CONCERNS TO

Martha Connor and her family on the death of her father,
Leonard Alfred Willson, November 7

Barbara Bond and family on the death of her father, Phillip Blackmon Harris,
November 17, Fayetteville, NC

If you have experienced a birth, marriage or death you want to share with the church,
email Lisa Crumpler at lcrumpler@whitememorial.org

If you have a relative or church friend who is hospitalized,
call the Pastoral Care line 919-834-3425, ext. 210 or email Caroline Parker
at cparker@whitememorial.org so our pastoral staff can reach out.

If you have a pastoral care need outside of regular business hours,
call our after-hours pastor on call at 919-605-4593.

UNCLAIMED STOCK GIFTS

Will the generous donors of the following
stocks please email or call Jody Grayson
at 834-3425 ext. 204 to identify your gift
so that we can give you proper credit?
Allspring, American Express, Avidxchange
Holdings, Apple Inc.

PASTOR'S SPECIAL ASSISTANCE FUND & COMMUNITY SERVICE FUND

As we move through this season of
gratitude and giving, please consider a gift
to the Pastor's Special Assistance Fund.
This fund provides help for members of our
church family in times of need—whether
that's for bills, healthcare, food, or other
essentials. We also invite you to contribute
to the Community Service Fund benefiting
others in our community who have
particular needs. Thank you for helping
care for one another in such a tangible way.
To make a contribution to these funds visit
whitememorial.org/give.

HOSPITALITY ON CHRISTMAS EVE

Christmas Eve presents multiple
opportunities to welcome people in the
manner of Christ as we celebrate his birth.
We need people to serve on the Hospitality
Team (also known as ushering) to foster
an atmosphere of welcome and to ensure
worship services flow smoothly on a day
with hundreds of people in attendance.
These folks arrive early to hand out candles
and bulletins and provide invaluable
support to our staff. If you are available to
serve at a worship service (3:00, 4:00, 5:30,
7:00 p.m.) [please register here](#).

LUTHER ELEVATOR TEMPORARILY OUT OF SERVICE

The Luther elevator is currently undergoing
repairs and will be unavailable for the next
couple of weeks. We apologize for any
inconvenience this may cause and will
provide an update as soon as it is back in
operation. Thank you for your patience and
understanding.

A Snapshot of What's Happening This Week at WMPC

Sunday, November 30

Isaiah 2:1-5; Matthew 24:36-44

Monday, December 1

Psalm 124; Genesis 8:1-19

- **Bridge With Friends**
1:00 p.m. | The Hub
- **Pickleball**
2:00 p.m. | Pickard Hall
- **Tai Chi**
5:30 p.m. | Pickard Hall

Tuesday, December 2

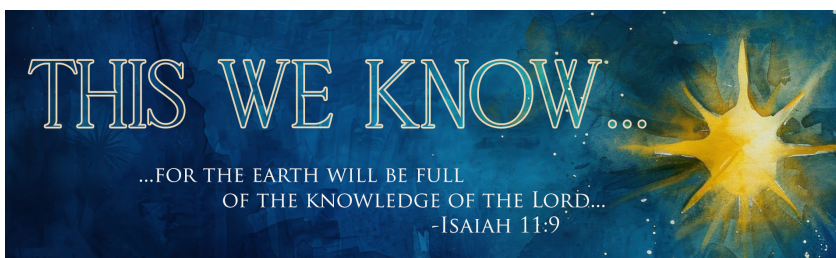
Psalm 124; Genesis 9:1-17

- **Men's Breakfast/Bible Study**
7:00 a.m. | Geneva Hall
- **Women's Breakfast/Circle**
7:00 a.m. | The Connector
- **Gentle Yoga**
8:30 a.m. | C200
- **Outreach Knitting Group**
9:30 a.m. | R400
- **Mahjong**
1:00 p.m. | The Hub
- **30s/40s Men's Group Gathering**
7:00 p.m. | Offsite

Wednesday, December 3

Psalm 124; Isaiah 54:1-10

- **Chair Yoga**
10:00 a.m. | C200
- **Shepherd's Table**
10:00 a.m. | Offsite
- **Lectio Divina**
11:00 a.m. | Virtual
- **Yin Yoga**
11:15 a.m. | C200
- **Note in the Pocket**
1:30 p.m. | Offsite
- **Pickleball**
2:00 p.m. | Pickard Hall
- **Advent Midweek Service**
6:30 p.m. | Chapel



ADVENT WORSHIP TIMES

Sunday Mornings

November 30, December 7, 14

9:30 & 11:00 a.m. | Sanctuary
9:30 a.m. | Sunday School
10:45 a.m. | OnPoint in Main Hall

December 21 Lessons & Carols

9:30 & 11:00 a.m. | Sanctuary

Wednesday Evenings

December 3, 10, 17

Advent Evening Prayer

6:30-7:00 p.m. | Davidson Chapel
(childcare available with registration)

30s + 40s MEN'S GROUP GATHERING

Tuesday December 2 | 7:00 p.m. | Raleigh Brewing

Come out for a night of faith, fellowship and fun at Raleigh Brewing on December 2. [Contact Anne Galliher](#) for more information.

ADVENT CONTEMPLATIVE RETREAT

Thursday December 4 | 9:00 a.m. - 4:00 p.m. | WMPC

Join Associate Pastor Cate Church Norman and Pastoral Resident Lee Hunter as we prepare for the season of Advent with an all-day contemplative retreat. We'll spend time on our church campus engaging in scripture, prayer, spiritual practices, and fellowship. Scholarships are available. Register by Monday, December 1 at 5:00 p.m.: whitememorial.org/register.

WEEKDAY SCHOOL OPEN HOUSE

Tuesday December 9 | 9:30 a.m. | Davidson Chapel

Join us for the Weekday School Open House. It's a great opportunity to meet faculty, tour the facilities and get answers to any questions you may have. The open house is on Tuesday, December 9 at 9:30 a.m., beginning in Davidson Chapel. No registration necessary.

ADVENT PODCAST EPISODE TWO DROPS MONDAY

The stories and songs of our faith remind us what we know, especially when the world feels uncertain. In this episode, Christopher Edmonston and Grier Booker Richards will help us examine and navigate the questions: What are we really getting ready for this season, and how might God's vision of peace look different from our own? The episode will be released Monday at 6:00 a.m. on our website, Spotify and Apple Podcasts.

CHILDREN'S MOVIE NIGHT

Sunday December 14 | 5:00 - 7:00 p.m. | Calvin 200

Children in Kindergarten-3rd grade are invited to watch *The Star* from 5 - 7 p.m. in C200. Bring your sleeping bag or blanket and join us for movie night in Calvin 200! Pizza is \$6.00 per person. [Click here to register](#).

CLUB 4/5 MOVIE NIGHT

Sunday December 14 | 5:00 - 7:00 p.m. | Calvin 100

4th & 5th graders are invited to join us for Movie Night! On December 14 at 5:00 p.m., we'll watch *The Santa Clause*. Bring your sleeping bag or blanket and join us for movie night in Calvin 100! Pizza is \$6.00 per person. [Click here to register](#).

J O Y ♥ G I F T



December 7 | 3:00 p.m.
MAIN HALL

A WMPC family worship tradition.

During the Joy Gift Worship Service, the Christmas Story will unfold through lessons and carols. Children, ages four through 5th grade will come forward to the WMPC Christmas tree with ornaments that were made in Sunday School and can place under the tree their gift of an unwrapped new toy or food for families during the offertory.

Music will be led by our Children's Choirs.
Childcare is provided for children three and younger, beginning at 2:45 p.m.

2026 WOMEN'S RETREAT
JANUARY 23-25
WRIGHTSVILLE BEACH

Beloved on the Earth:

Being, Belonging, Becoming

with Rev. Gracie Payne
Associate Pastor for Engagement
Second Presbyterian Church, Indianapolis

Registration now open!
whitememorial.org/register



Congregational Care + Health

CAREGIVER'S COFFEE

Tuesday December 16 | 10:30 a.m. - 12:00 p.m. | The Hub

Are you a family caregiver or would you like to fellowship with family caregivers? Are you interested in learning more about the many community resources available to you? If so, please come for coffee, conversation, and connection at our next Caregiver's Coffee on Tuesday, December 16 from 10:30 a.m. - noon in the Hub. All are welcome; please feel free to invite a friend or neighbor to join you. For more information, please contact Martha Grove Hipskind, mghipskind@whitememorial.org.

A Snapshot of What's Happening This Week at WMPC

Thursday, December 4

Psalm 72:1-7, 18-19; Isaiah 4:2-6

- **Advent Contemplative Retreat**
9:00 a.m. - 4:00 p.m. | WMPC campus
- **Keenagers**
10:45 a.m. | Geneva Hall
- **Note in the Pocket**
1:30 p.m. | Offsite

Friday, December 5

Psalm 72:1-7, 18-19; Isaiah 30:19-26

- **Pickleball**
2:00 p.m. | Pickard Hall

Saturday, December 6

Psalm 72:1-7, 18-19; Isaiah 40:1-11

For more information about any of these events, please visit our website whitememorial.org or call the church office 919-834-3424.

Christopher Edmonston, Pastor
Cynthia Baggett, Director of Weekday School
Genevieve Brooks, Director of Family Ministry
Cate Church Norman, Associate Pastor for Pastoral Care
Claire Cox-Woodlief, Executive Director
Brock Downward, Director of Music Emeritus
Jennifer Eastman, Director of Young Children's Ministry
Jim Ferry, Parish Associate
Anne Galliher, Associate Pastor for Congregational Engagement
Kelly Gold, Director of Children's and Youth Music
Tom Harris, Parish Associate
Martha Grove Hipskind, Health Ministry Coordinator
Kathy Howell, Communications Director
Lee Hunter, Pastoral Resident
Bailey Morton, Director of Youth Ministry
Eric Nanz, Associate Director of Music and Worship Arts
Linda Nunnallee, Director of Community Engagement
Grier Booker Richards, Associate Pastor for Faith Formation and Worship Ministries
Art Ross, Pastor Emeritus
Judy Yates Siker, Parish Associate
Lynn Springfield, Director of Elementary Ministry
Colisha C. Stanford, StepUp Director
Martha Stevenson, Educator Emerita
Eric Wall, Director of Music



We are a Stephen Ministry congregation.

Outreach

SUNDAY OUTREACH SERVICE POP-UP

Sunday, December 7 | 10:15–11:00 a.m. |

Outside Main Hall

Join us as we assemble 250 Christmas Blessing Bags for our neighbors served at Shepherd's Table Soup Kitchen. All ages welcome!

STEPUP MINISTRY COAT DRIVE

StepUp Ministry is seeking coats for 75 children/teens in various sizes, starting at 18 months through adult XL. **Items Due December 10, 2025.** For more information contact Dayna Jameson, djameson@stepupministry.org

BACKPACK BUDDIES

Churchwide Collection

Each week when school is in session, our church provides food-insecure children at Oberlin Middle and Lynn Road Elementary Schools with healthy meals and snacks. Contact Jan Stewart, thestewarts2614@gmail.com. Amazon link is on website. If you'd prefer to shop you can pick up a shopping list on the Outreach room door (K100).

MAYVIEW ANGEL TREE

A heartfelt thank you to each and every one of you who so swiftly chose all of the angels from our tree! Please return three wrapped gifts per angel to the Ross Lobby on or before December 14. Please include the angel tag from the Angel Tree with packages or gift cards. Return "Gift Card" Angels to Kristi Wilson's mailbox in the Ross Building. Email Kristi at kristikwilson@gmail.com with any questions you may have.

A PLACE AT THE TABLE

A Place at the Table is in search of dedicated volunteers to join their café team. Volunteers will be responsible for various tasks, including greeting guests, preparing food, and even assisting with dishwashing. There is something for everyone! The primary volunteer focus is to help foster a sense of love and support. Volunteers can commit to working once a week, every other week, or any other schedule that suits their availability. Flexibility is crucial in ensuring that the café can meet its operational needs effectively. Currently, they are in urgent need of additional hands to help them thrive.

CHRISTMAS SHARE

Christmas Share, an alternative giving program, has made significant contributions to our community and international partners totaling more than one million dollars since its inception. Established over three decades ago by Presbyterian Women, it remains an important Christmas outreach initiative.

During Advent a table will be set up on Sunday mornings from 9:00 - 11:00 a.m. in the connector for you to make donations and to select your cards.

ADVENT/CHRISTMAS MEMORIALS AND HONORARIA

We have a long-standing tradition of collecting contributions in memory of a loved one or in honor of family, friends, or members of the church family during Advent. Your gifts may be for any amount of \$25 or more, and the money raised enables us to provide the florals and greenery used in our worship spaces during Advent and Christmas, as well as throughout the year. Those honored or memorialized will be listed in the bulletin inserts on December 14 (deadline for print is December 10) and on Christmas Eve (deadline for print is December 18). Contact Lisa Crumpler at lcrumpler@whitememorial.org for more information.

SALVATION ARMY CHRISTMAS SERVICE OPPORTUNITIES

Help sort and distribute Angel Tree gifts at the Salvation Army Christmas Warehouse (1300 Buck Jones Road, Raleigh).

WMPC volunteer shifts:

December 9 | 1–4 p.m.

10 WMPC members are already signed up—join us!

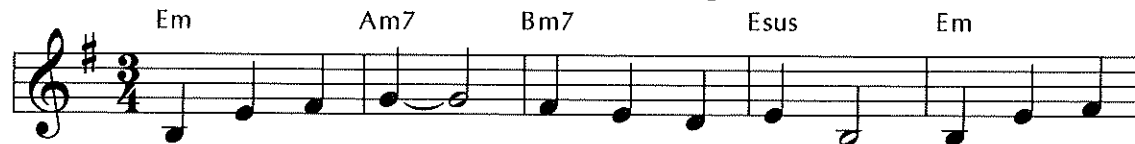
To volunteer on these dates, email Angela Farthing at angelajim8578@att.net.

COOKIE SERVICE PROJECT FOR SHEPHERD'S TABLE SOUP KITCHEN

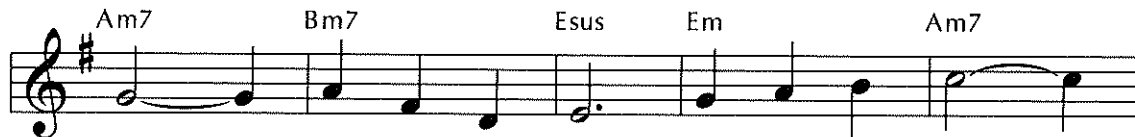
Attention Bakers! Help spread Christmas joy by sharing homemade festive cookies with the 250 guests served daily at Shepherd's Table. Package cookies in single-serving sized bags (bags available in the Ross Building lobby). **Drop off cookies December 14 & 15 in the Ross Building.** Details and sign-up available online: <https://tinyurl.com/shepherdstablecookies>. For more info, email Jan Stewart. Let's share the sweetness of the season!

Longing for Light, We Wait in Darkness 314

Christ, Be Our Light



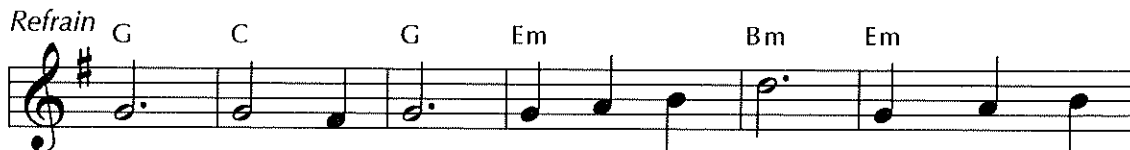
1 Long-ing for light, we wait in dark-ness. Long-ing for
 2 Long-ing for peace, our world is trou-bled. Long-ing for
 3 Long-ing for food, man - y are hun - gry. Long-ing for
 4 Long-ing for shel - ter, man - y are home-less. Long-ing for
 5 Man - y the gifts, man - y the peo - ple, man - y the



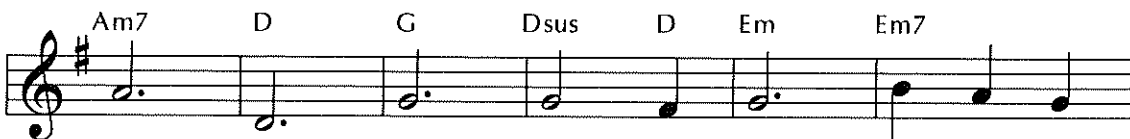
truth, we turn to you. Make us your own,
 hope, man - y de - spair. Your word a - lone
 wa - ter, man - y still thirst. Make us your bread,
 warmth, man - y are cold. Make us your build - ing,
 hearts that yearn to be - long. Let us be ser - vants



your ho - ly peo - ple, light for the world to see.
 has power to save us. Make us your liv - ing voice.
 bro - ken for oth - ers, shared un - til all are fed.
 shel - ter - ing oth - ers, walls made of liv - ing stone.
 to one an - oth - er, mak - ing your king - dom come.



Christ, be our light! Shine in our hearts. Shine through the



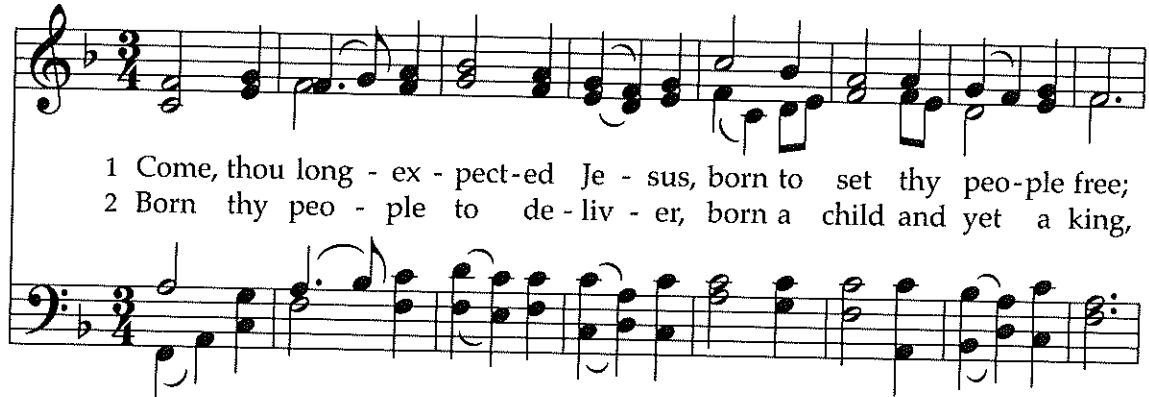
dark - ness. Christ, be our light! Shine in your



church gath - ered to - day.

By blending biblical images and current vignettes in the present tense, this hymn connects Christ's promise that he is the Light of the world (John 8:12, 9:5) and his charge to his followers to be the light of the world (Matthew 5:14). This is part of the church's servant calling.

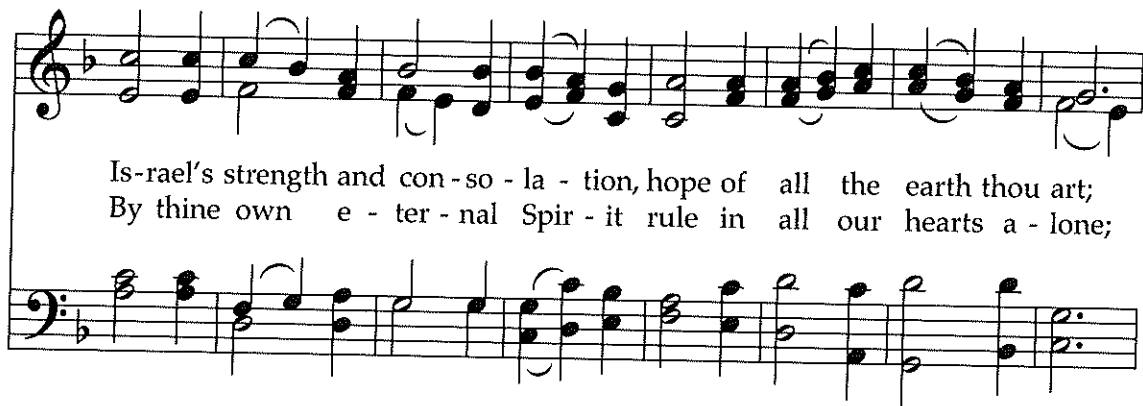
Come, Thou Long-Expected Jesus 82



1 Come, thou long - ex - pect-ed Je - sus, born to set thy peo-ple free;
2 Born thy peo - ple to de - liv - er, born a child and yet a king,



from our fears and sins re - lease us; let us find our rest in thee.
born to reign in us for-ev - er, now thy gra-cious king-dom bring.



Is-rael's strength and con-so - la - tion, hope of all the earth thou art;
By thine own e - ter - nal Spir - it rule in all our hearts a - lone;



dear de - sire of ev - ery na - tion, joy of ev - ery long-ing heart.
by thine all - suf-fi - cient mer - it raise us to thy glo-rious throne.

With its opening "Come," this hymn sounds the note of entreaty and invitation that characterizes the Advent season (from the Latin *adventus* = "coming"). Its blending of memory and hope helps us to give voice to our present faith as we stand between the past and the future.