

# WHITE MEMORIAL

## PRESBYTERIAN CHURCH

SECOND SUNDAY AFTER CHRISTMAS DAY

January 4, 2026 | 9:30 & 11:00 a.m.

### WE GATHER TO WORSHIP

The sound of bells summons us to gather for worship.

#### Preparation for Worship

*Holy God, creator of light and herald of goodness, at the waters of his baptism you proclaimed Jesus your beloved Son. With the baptized of every time and generation, may we say yes to your call to repentance and be led to the life of abundance we experience in your kinship and your love. Amen.*

#### Prelude on the Introit for Epiphany

Maurice Duruflé, composer

#### Prayer of the Day

Lord God of the nations,  
**we have seen the star of your glory rising in splendor.**  
The radiance of your incarnate Word  
**pierces the night and signals the dawn of justice and peace.**  
May his brightness illumine our lives  
**and beckon all nations to walk as one in your light.**  
We ask this through Jesus Christ your Word made flesh,  
**who lives and reigns with you and the Holy Spirit,**  
**in the splendor of eternal light,**  
**God forever and ever. Amen.**

#### \*Hymn 147 The First Nowell

THE FIRST NOWELL

#### \*Confession and Pardon

Lee Hunter

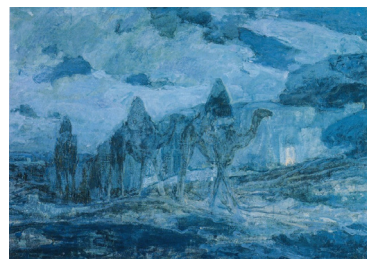
**Holy and merciful God, you have revealed your light to the world,**  
**yet we confess that we often prefer the shadows we know.**  
**Like travelers who fear unfamiliar roads,**  
**we cling to what is comfortable and predictable,**  
**even when your star calls us onward.**  
**We want revelation without disruption,**  
**illumination without change.**  
**So forgive us, Lord,**  
**when we settle for safe religion instead of living faith;**  
**when we confuse habit with holiness;**  
**when we return home the same way we came,**  
**unwilling to be transformed by your presence.**  
**Give us courage to trust when the way forward feels unfamiliar,**  
**and turn us toward your light.**  
**Lead us, O God, home by another way.**

*Silent prayers*

#### \*Hymn 585 Glory to God

MACHU-PICHU

Glory to God, glory to God, glory in the highest!  
**Glory to God, glory to God, glory in the highest!**  
To God be glory forever!  
**To God be glory forever!**  
Alleluia, Amen!  
**Alleluia, Amen!**



*Three Wise Men* © 1925 by Henry Ossawa Tanner, (1859-1937)

\* Asterisks invite us to rise in body or spirit.

**Words in bold** are for everyone to say or sing.

This beloved Christmas carol is also an Epiphany carol, encompassing the stories of shepherds as well as Magi, both of whom are visited by heavenly brilliance and manifestation. Its tune moves continuously from low notes to high, from high to low—possibly evocative of bridged space between heaven and earth.

Call-and-response is the basis of this Peruvian song: we sing what we hear—in this case, the angels' words to the shepherds.

WORSHIP | EMBRACE | SERVE

*in the manner of Christ*

## Sharing of the Peace of Christ

The peace of our Lord Jesus Christ be with you.  
**And also with you.**

## Welcome and Announcements

### WE PROCLAIM GOD'S WORD

#### Sacrament of Baptism

**Charlie Kidder**, son of Arianna and Grady Kidder (9:30)  
**Augie Dove**, daughter of Megan and Spencer Dove (11:00)



#### Prayer for Illumination

Anne Galliher

#### Old Testament Reading Isaiah 60:1-6

pew Bible p. 10

#### \*Hymn 152 What Star Is This, with Beams So Bright

PUER NOBIS NASCITUR

#### New Testament Reading Matthew 2:1-12

pew Bible p. 623

The word of God for the people of God.  
**Thanks be to God.**

#### Sermon Returning Home By Another Way

Grier Booker Richards

### WE RESPOND TO GOD'S WORD

#### Hymn 158 Born in the Night, Mary's Child *stanzas 1 and 2*

MARY'S CHILD

#### Offering

##### Three Epiphany Songs

Peace and love to all—  
**peace and love to all.**

Villancico puertorriqueño  
trans. G. Evans/W. Ehret

De tierra lejana venimos a verte, nos sirve de guía la estrella de Oriente.  
Oh brillante estrella que anuncia la aurora, no nos falte nunca tu luz bienhechora.  
Gloria en las alturas al Hijo de Dios,  
gloria en las alturas y en la tierra amor,  
y en la tierra amor.

Glowing gold I bring the newborn babe so holy,  
token of his power to reign above in glory.  
Glory in the highest to the Son of heaven, and upon the earth  
be peace and love to all—  
**peace and love to all.**

The tune name of this hymn is PUER NOBIS NASCITUR—"for us is born." It is associated with a Christmas text, "Unto us a boy is born, King of all creation." Here it carries an Epiphany text; words and music together celebrate the grandeur of the light's appearance and of the coming journey of the Magi.

This tender hymn is more than a sweet lullaby; its poignancy and sense of sorrow remind us that the Holy Child was also a refugee born to a suffering world.

These three songs tell the Epiphany story. "De tierra lejana venimos" is a Puerto Rican song in which we hear the Magi sing.

Frankincense I bring the child of God's own choosing,  
token of our prayers to heaven ever rising.  
Glory in the highest to the Son of heaven, and upon the earth  
be peace and love to all—  
**peace and love to all.**

Bitter myrrh have I to give the infant Jesus,  
token of the pain that he will bear to save us.  
Glory in the highest to the Son of heaven, and upon the earth  
be peace and love to all—  
**peace and love to all.**

*Lully, lullay, thou little tiny child!*  
*By by, lully, lullay.*

Coventry Carol, 15th. cent.

O sisters two, how may we do for to preserve this day  
this poor youngling for whom we do sing *by by, lully, lullay.*

Herod the king, in his raging, charged he hath this day  
his men of might, in his own sight, all young children to slay.

Then woe is me, poor Child, for thee! And ever morn and day,  
for thy parting neither say nor sing *by by, lully, lullay.*

Hymn 158

**Truth of our life, Mary's Child, you tell us God is good;  
yes, it is true, Mary's Child, shown on your cross of wood.**

**Hope of the world, Mary's Child, you're coming soon to reign;  
King of the earth, Mary's Child, walk in our streets again.**

#### \*Affirmation of Faith

from *The United Church of Canada*

**We are not alone,  
we live in God's world.  
We believe in God:  
who has created and is creating,  
who has come in Jesus,  
the Word made flesh,  
to reconcile and make new,  
who works in us and others  
by the Spirit.  
We trust in God.  
We are called to be the Church:  
to celebrate God's presence,  
to live with respect in Creation,  
to love and serve others,  
to seek justice and resist evil,  
to proclaim Jesus, crucified and risen,  
our judge and our hope.  
In life, in death, in life beyond death,  
God is with us.  
We are not alone.  
Thanks be to God.**

## WE GO IN GOD'S NAME

\*Hymn 543 God, Be the Love to Search and Keep Me

GREEN TYLER

\*Charge & Benediction

\*Postlude What Star Is This

arr. Aaron David Miller

The Coventry Carol is from English liturgical drama; in it the midwives sing for the Child's safety in the shadow of Herod's terror. "Mary's Child" is our prayer for Jesus to return to the streets in which we also walk in both fear and hope.

The Session has called a meeting of the congregation on **January 11, following the 11 a.m. worship service** in the Sanctuary. The purpose of the meeting will be to hear a report from the Four Pillars building team and to take action on a proposed leasing agreement with StepUp Ministry as required by the Presbytery of New Hope and Book of Order (PCUSA).

The flowers in the chancel today are given to the glory of God and in loving memory of Mary Grady Burnette Koonce by Mary Grady and Vic Bell and granddaughter Mary Grady Burnette Bell.

Music in today's service presented with permission under Podcast/Streaming License with  
One License number #A-714069



[Scan or click here to submit a prayer request.](#)

**AFTER HOURS PASTOR ON CALL: 919-605-4593**

Each Sunday we offer three opportunities for you to worship with us at White Memorial in the Sanctuary and OnPoint@1704 in the Main Hall. While you will notice differences in music, location, and worship leadership among our different services, what unites us in our worship is our scripture, liturgy, and sermon. All services use the same Call to Worship, Prayer of Confession, readings from Scripture, and Affirmation of Faith.



WELCOME TO WHITE MEMORIAL  
PRESBYTERIAN CHURCH, PC (USA)

We're so glad you are  
worshipping with us today.

#### Visiting?

Deacons are in the Narthex  
to offer a friendly greeting,  
answer questions, and provide  
directions.

#### Looking to Become a Member?

New members are received  
after attending the *Believing &  
Belonging @WMPC* class.  
Visit [whitememorial.org/join](http://whitememorial.org/join) or  
contact Elizabeth Viohl at  
ext. 206 for class dates,  
registration, and details.

#### Things to Know

##### Restrooms

Hallway to Jane Bell Gathering  
Space (Pulpit side) and first floor  
of the Luther Building.

##### Childcare

Available for children  
up to 4 years old.

##### Sunday School

9:30 a.m. for all ages.

##### Refreshments & Coffee

The Connector and Main Hall.

##### Hearing Assistance

Loop system and FM system  
available in the Sanctuary.

##### AED/Narcan Locations

WMPC campus has five AED/  
Narcan locations around  
campus: Narthex- Sanctuary,  
Main Hall-Edinburgh,  
Lobby-Ross, Lobby-Calvin,  
3rd floor-Luther

##### Live Streaming

Services available at  
[whitememorial.org](http://whitememorial.org).  
Facebook & YouTube

##### Bulletins

Recycled after services as part  
of our care for God's creation.



## IN THE CHURCH TRIUMPHANT

Thomas Johnston Andrews — December 22, 2025

Family member: wife, Norma Harrell

## PRAYERS AND CHRISTIAN CONCERNS TO

**Bo Roberts and family** on the death of his sister, Ann Roberts Vitale,  
December 13, Blanch, NC

**Lori Jones and family** on the death of her father, James Ellen Sinclair, Jr.,  
December 18, Clinton, NC

## NEW PRESBYTERIANS

**Stuart Johnson Troxler**, December 19, child of Anna and Davis Troxler,  
grandchild of Gail and Doug Sprecher

If you have experienced a birth, marriage or death you want to share with the church,  
email Lisa Crumpler at [lcrumpler@whitememorial.org](mailto:lcrumpler@whitememorial.org)

If you have a relative or church friend who is hospitalized,  
call the Pastoral Care line 919-834-3425, ext. 210 or email Caroline Parker  
at [cparker@whitememorial.org](mailto:cparker@whitememorial.org) so our pastoral staff can reach out.

If you have a pastoral care need outside of regular business hours,  
call our after-hours pastor on call at 919-605-4593.

## UNCLAIMED STOCK GIFTS

Will the generous donors of the following  
stocks please email or call Jody Grayson  
at 834-3425 ext. 204 to identify your gift  
so that we can give you proper credit?  
Allspring, American Express, AvidXchange  
Holdings.

## NOMINATIONS BEING ACCEPTED FOR NEW OFFICERS

The Churchwide Nominating Committee  
starts meeting in mid-January to consider  
nominations for church Elders and  
Deacons, class of 2029. Nominations are  
now being accepted. Please give prayerful  
consideration to placing a church member  
into nomination for these critical leadership  
roles. The nomination form can be found  
online. All recommendations must be  
received by February 2, 2026.

## LUTHER ELEVATOR TEMPORARILY OUT OF SERVICE

The Luther elevator is currently undergoing  
repairs and will be unavailable for the  
next couple of weeks. We are diligently  
working to get the elevator operational and  
apologize for any inconvenience this may  
cause. Thank you for your patience and  
understanding.

## A Snapshot of What's Happening This Week at WMPC

Sunday, January 4

*Isaiah 60:1-6; Matthew 2:1-12*

Monday, January 5

*Psalms 72; Joshua 1:1-9*

- **Bridge With Friends**  
1:00 p.m. | The Hub
- **Tai Chi**  
5:30 p.m. | Pickard Hall

Tuesday, January 6

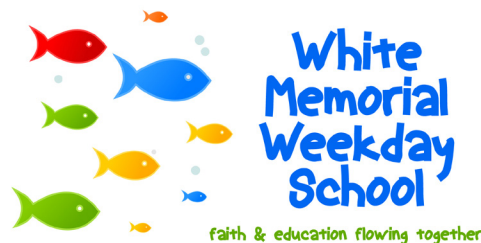
*Epiphany of the Lord*

- **Men's Breakfast/Bible Study**  
7:00 a.m. | Geneva Hall
- **Women's Breakfast/Circle**  
7:00 a.m. | The Connector
- **Gentle Yoga**  
8:30 a.m. | C200
- **Weekday School Open House**  
9:30 a.m. | Davidson Chapel
- **Mahjong**  
1:00 p.m. | The Hub

Wednesday, January 7

*Psalms 72; 1 Kings 10:1-13*

- **Chair Yoga**  
10:00 a.m. | C200
- **Wednesday Together Dinner**  
5:00 p.m. | Main Hall
- **"Dear William Book Study"**  
6:30 p.m. | K200



**Open House for Prospective Families**  
Tuesday | December 9 | 9:30 a.m. | Davidson Chapel

### WEEKDAY SCHOOL OPEN HOUSE

**Tuesday December 6 | 9:30 a.m. | Davidson Chapel**

Join us for the Weekday School Open House. It's a great opportunity to meet faculty, tour the facilities and get answers to any questions you may have. The open house is on Tuesday, January 6 at 9:30 a.m., beginning in Davidson Chapel. No registration necessary.

### MAHJONG AT WMPC

**Tuesday January 6 | 1:00 - 2:30 p.m. | The Hub**

We now have a group playing Mahjong on the first and third Tuesdays of each month. Whether you're a seasoned player or brand new to the game, everyone is welcome! Don't forget your 2025 mahjong card if you have one. Registration isn't necessary but if you'd like to receive a prompt email, contact Beth Moore at [bmoore@whitememorial.org](mailto:bmoore@whitememorial.org) to be included in the Realm group.

### KINDERGARTEN - FIFTH GRADE SKATING PARTY

**Saturday January 10 | 10:00 a.m. - 12:15 p.m. | United Skates of America**

**Kindergarten-Fifth Graders**

Pay at the rink when you arrive. Cost is \$13 per person (includes admission and skate rental). Adult chaperones who are not skating are free. All children must have a supervising adult present for the event. For more information contact Lynn Springfield at 919-834-3425, ext. 232. [Click here to register.](#)

### "DEAR WILLIAM" CHURCHWIDE BOOK STUDY

The WMPC Mental Health & Wellness Ministry and Youth Ministry are partnering to host internationally acclaimed author David Magee via Zoom on **Wednesday, January 28**, to discuss his powerful memoir "Dear William." With honesty and heart, Magee shares his family's intergenerational struggle with substance abuse and mental health challenges. His poignant and uplifting message transforms tragedy into a call to hope and healing, inspiring a commitment to help others. Prior to the webinar, we will have two book discussion sessions on **Wednesday, January 7 and Wednesday, January 21 at 6:30 p.m. in K200.**

### BAPTISM AND BELONGING

**Sunday January 11 | 9:30 - 10:30 a.m. | R400**

*Baptism and Belonging* is a workshop for parents of children age four or younger who would like to present their children for Baptism. In this workshop, parents learn about the significance of the Sacrament of Baptism, go over logistical details, connect with fellow parents, and get an overview of a child's faith journey at WMPC. Expectant parents are also invited to attend. Childcare and a light breakfast are provided. [Click here to register.](#)



## WOMEN'S LUNCHEON

**Monday January 12 | 12:00 - 1:00 p.m. | Main Hall**

Start the new year with fellowship and good food, along with guidance on calming our minds. Our luncheon presentation, "Accepting (Not Fighting) Anxiety," will be led by Douglas Andrew, Licensed Clinical Social Worker. Douglas operates his own therapy practice, supporting people in living purposeful, joy-filled lives. He grew up in our White Memorial community, and we are thrilled to welcome him back for our luncheon. Thank you to Circle G for hosting. [Register for lunch](#) by noon, Tuesday, January 6.

## PRESBYTERIAN WOMEN HONORARY LIFE MEMBERSHIP

An Honorary Life Membership in Presbyterian Women is conferred upon an individual for recognition of faithful service in some area of the church's work. Look around you...whom do you see as one who gives honor and glory to God while serving him actively and faithfully in our church and community? Whom should be recognized in a special way? Whether this person works behind the scenes or in front, we want your nominations for this person now. Please submit your nominations, along with your nominee's history of service and your statement of why you are nominating this person on the form found on the website and in select places around campus. Return form to June Ann Ward at [jaly257@nc.rr.com](mailto:jaly257@nc.rr.com). Deadline for receipt of this nomination is February 11, 2026.

## Congregational Care + Health

### CAREGIVER'S COFFEE

**Wednesday January 14 | 1:00 - 2:30 p.m. | The Hub**

Family caregivers, please join Congregational Care staff for a Caregivers Coffee on Wednesday, January 14 between 1:00 and 2:30 p.m. in the Hub. Caring for a loved one with physical, developmental, mental health or aging related challenges can feel like a lonely experience. Please come for coffee, conversation, and connection with other family caregivers. For more information, please contact Martha Grove Hipskind, [mghipskind@whitememorial.org](mailto:mghipskind@whitememorial.org).

### DEPRESCRIBING TO OPTIMIZE MEDICATION USE

**Tuesday January 27 | 11:30 a.m. - 1:00 p.m. | Geneva Hall**

To learn more about deprescribing, WMPC Health Ministry and Mental Health and Wellness invite you to join them for a Lunch and Learn event with Dr. DeLon Canterbury on Tuesday, January 27 from 11:30 a.m. - 1:00 p.m. in Geneva Hall. If you would like to order a box lunch, the cost is \$16 (scholarship available). You are also welcome to bring your lunch or to come for only the program. Registration is required by January 22. Questions, please contact Health Ministry Coordinator, Martha Grove Hipskind at [mghipskind@whitememorial.org](mailto:mghipskind@whitememorial.org). [Register here](#).

## A Snapshot of What's Happening This Week at WMPC

**Thursday, January 8**

*Psalm 29; 1 Samuel 3:1-9*

- **Keenagers**  
10:45 a.m. | Geneva Hall

**Friday, January 9**

*Psalm 29; 1 Samuel 3:10-4:1a*

**Saturday, January 10**

*Psalm 29; 1 Samuel 7:3-17*

- **Skating Party**  
10:00 a.m. | Offsite

For more information about any of these events, please visit our website [whitememorial.org](http://whitememorial.org) or call the church office 919-834-3424.

---

**Christopher Edmonston**, Pastor  
**Cynthia Baggett**, Director of Weekday School  
**Genevieve Brooks**, Director of Family Ministry  
**Cate Church Norman**, Associate Pastor for Pastoral Care  
**Claire Cox-Woodlief**, Executive Director  
**Brock Downward**, Director of Music Emeritus  
**Jennifer Eastman**, Director of Young Children's Ministry  
**Jim Ferry**, Parish Associate  
**Anne Galliher**, Associate Pastor for  
Congregational Engagement  
**Kelly Gold**, Director of Children's and Youth Music  
**Tom Harris**, Parish Associate  
**Martha Grove Hipskind**, Health Ministry Coordinator  
**Kathy Howell**, Communications Director  
**Lee Hunter**, Pastoral Resident  
**Bailey Morton**, Director of Youth Ministry  
**Eric Nanz**, Associate Director of Music and Worship Arts  
**Linda Nunnallee**, Director of Community Engagement  
**Grier Booker Richards**, Associate Pastor for  
Faith Formation and Worship Ministries  
**Art Ross**, Pastor Emeritus  
**Judy Yates Siker**, Parish Associate  
**Lynn Springfield**, Director of Elementary Ministry  
**Colisha C. Stanford**, StepUp Director  
**Martha Stevenson**, Educator Emerita  
**Eric Wall**, Director of Music



We are a Stephen Ministry congregation.

## Outreach

### BACKPACK BUDDIES

#### Churchwide Collection

Each week when school is in session, our church provides food-insecure children at Oberlin Middle and Lynn Road Elementary Schools with healthy meals and snacks. Contact Jan Stewart, [thestewarts2614@gmail.com](mailto:thestewarts2614@gmail.com). Amazon link is on website. If you'd prefer to shop you can pick up a shopping list on the Outreach room door (K100).

### YOUTH LOCKOUT

**Friday | January 16 | 7:00 p.m. - 7:00 a.m.**

**Registration:** [whitememorial.org/register](http://whitememorial.org/register)

All middle and high school youth are invited to register for this all night extravaganza! We meet at the church at 7:00 p.m. on Friday night to check in before we load up on the charter buses and church vans for the most epic 12 hours of your year (thus far). This year's activities will be announced through the weekly email youth newsletter. Past trips have included bowling, laser tag, trampoline parks, roller skating and more! You don't want to miss this wild night!

Questions? Contact Kaitlyn Thornton at [kthornton@whitememorial.org](mailto:kthornton@whitememorial.org). It takes 20 - 25 adult chaperones to make this event happen, so if this sounds fun to you, please contact Bailey Morton at [bmorton@whitememorial.org](mailto:bmorton@whitememorial.org) or Paige Hokunson at [phokunson@whitememorial.org](mailto:phokunson@whitememorial.org) ASAP!

### CIRCLE OF SECURITY PARENTING PROGRAM

**Class Begins Sunday January 25 | R400**

In collaboration and partnership with SAFEchild, WMPC is offering a program to parents/ caregivers and grandparents. At times, all parents feel lost or without a clue about what our child might need from us. Imagine what it might feel like if you were able to make sense of what your child was really asking from you. The Circle of Security Parenting™ program is based on decades of research about how secure parent-child relationships can be supported and strengthened.

**Classes begin on Sunday, January 25- March 22 | R400**

Program Cost: \$80.00 for a 1-person registration or \$120.00 for registering a 2-person family pair

This class is designed to uplift parents/guardians, not place a financial burden. If cost is what is holding you from registering, please reach out to [Kaitlyn Thornton](mailto:Kaitlyn.Thornton@whitememorial.org) and she will distribute a scholarship to those who need.

[Register here.](#)

### ABOUT PLAY PALS

Play Pals is an after-preschool play group designed to foster both gross motor skill development and social-emotional growth in children ages 3-5. Led by a licensed pediatric physical therapist and a child development specialist, the group provides structured, play-based activities that encourage gross motor skills, coordination, confidence, and cooperative peer interaction.

#### **Threes:**

Classes for children in a 3s class are offered on Thursdays from 12:45-1:45 p.m.

Session One: January 8-March 15 (No class February 19)

Session Two: March 12-May 7 (No class April 2)

#### **Fours & K:**

Classes for children in a 4s or K class are offered on Tuesdays from 12:30-1:30 p.m.

Session One: January 6-March 3 (No class January 20)

Session Two: March 10-May 5 (No class March 31)

Registration can be found on our website

Cost: \$240/per session