

WHITE MEMORIAL PRESBYTERIAN CHURCH

SERVICE FOR THE SECOND SUNDAY AFTER EPIPHANY

STEPUP MINISTRY SUNDAY

January 18, 2026 | 9:30 & 11:00 a.m.



WE GATHER TO WORSHIP

The sound of bells summons us to gather for worship.

* Asterisks invite us to rise in body or spirit.

Words in **bold** are for everyone to say or sing.

Preparation for Worship

Gracious and Holy One, as we continue on our journey open our eyes to see your light; open our hearts to behold your grace. In the name of the one we continue to seek, amen.

Prelude Adoration

Florence Beatrice Price, composer

*Call to Worship

adapted from 1 Corinthians 12 and Genesis 1
Laura Martin

Just as the human body is made up of many parts,
so it is with the body of Christ.
In the one Spirit we were all baptized into one body.
Each part, each person offers unique strengths and gifts.
If one member suffers, all suffer together with them;
if one member is honored, all rejoice together with them.
Let us worship the God who created each of us and called us “very good.”

*Hymn 14 For the Beauty of the Earth

DIX

*Confession and Pardon

Austin Vernon

Come, bring your burdens to God,
for Jesus will never say no.

**Loving God, we confess that we too often try to go it alone,
stubbornly preferring to assert our independence
rather than embracing the interdependence for which you created us.
We wear ourselves out rather than ask for help.
Even when the task before us is heavy,
we allow our pride to isolate us and deprive others of the opportunity to use their unique gifts.
Forgive us, God.
Help us to bear one another's burdens and to recognize the value and worth
of every member of the body of Christ.**

Silent prayers

*Hymn 585 Glory to God

MACHU-PICHU

Glory to God, glory to God, glory in the highest!
Glory to God, glory to God, glory in the highest!
To God be glory forever!
To God be glory forever!
Alleluia, Amen!
Alleluia, Amen!

WORSHIP | EMBRACE | SERVE

in the manner of Christ

*Sharing of the Peace of Christ

The peace of our Lord Jesus Christ be with you.
And also with you.

Welcome and Announcements

WE PROCLAIM GOD'S WORD

Prayer for Illumination

Old Testament Reading Exodus 18:13-23

pew Bible p. 62

New Testament Reading 1 Corinthians 12:12-27

pew Bible p. 163
Emily Walser

The word of God for the people of God.
Thanks be to God.

Sermon

Timothy Johnson;
Chuck Buckler;
Sianna Levy;
Colisha Stanford

WE RESPOND TO GOD'S WORD

*Hymn 301 Let Us Build a House

TWO OAKS

Prayers of the People and The Lord's Prayer

**Our Father, who art in heaven, hallowed be thy name,
thy kingdom come, thy will be done, on earth as it is in heaven.
Give us this day our daily bread; and forgive us our debts,
as we forgive our debtors; and lead us not into temptation,
but deliver us from evil.
For thine is the kingdom and the power and the glory, forever. Amen.**

Offering

Allen Pote, composer

Many gifts, one Spirit; many songs, one voice;
many reasons, one promise; many questions, one choice.
O God, we pray for unity; give guidance from above.
In our differences, unite us in the circle of your love.
O God, remind us we are not alone.
Though we move on different pathways, we are walking to your throne.
Help us to love each other; show us ways to understand
we are members of one family, growing strong by joining hands.
Take our many ways of working; blend the colors of each soul
into the beauty of a rainbow.
Give us life, Lord—make us whole.

*Affirmation of Faith

adapted from the Confession of Belhar

**We believe that we share one faith, have one calling,
are filled with one Spirit, are baptized with one baptism,
eat of one bread and drink of one cup, confess one name,
are obedient to one Lord, and share one hope.**

**We believe it is only together that we come to know
the height and breadth and depth of the love of Christ,
that we are called to bear one another's burdens thereby fulfilling the law of Christ.**

We believe that we need one another.

**We believe that humanity's variety of spiritual gifts, opportunities,
backgrounds, convictions, languages, and cultures are opportunities
for mutual service and enrichment within the one visible people of God.**

WE GO IN GOD'S NAME

*Hymn 318 In Christ There Is No East or West

ST. PETER

*Charge & Benediction

*Postlude Prelude in D minor

J. S. Bach, composer

We welcome Alan Davis as our guest organist at 11:00 this morning and as accompanist at 9:30.

The flowers today are given to the Glory of God, in recognition of StepUp, and in memory of Lyric Isabella Woods and all who we mourn as victims of senseless violence.

The Cornerstone: Generosity 2026

As of Wednesday, January 14 we have received 609 pledges representing \$3.4 million towards our goal of \$5.4 million/1,000 pledging households. If you would like to make a pledge please visit whitememorial.org/give. Thank you for your generosity.

Music in today's service presented with permission under Podcast/Streaming License with One License number #A-714069



[Scan or click here to submit a prayer request.](#)

AFTER HOURS PASTOR ON CALL: 919-605-4593

Each Sunday we offer three opportunities for you to worship with us at White Memorial in the Sanctuary and OnPoint@1704 in the Main Hall. While you will notice differences in music, location, and worship leadership among our different services, what unites us in our worship is our scripture, liturgy, and sermon. All services use the same Call to Worship, Prayer of Confession, readings from Scripture, and Affirmation of Faith.



WELCOME TO WHITE MEMORIAL
PRESBYTERIAN CHURCH, PC (USA)

We're so glad you are
worshipping with us today.

Visiting?

Deacons are in the Narthex
to offer a friendly greeting,
answer questions, and provide
directions.

Looking to Become a Member?

New members are received
after attending the *Believing &
Belonging @WMPC* class.
Visit whitememorial.org/join or
contact Elizabeth Viohl at
ext. 206 for class dates,
registration, and details.

Things to Know Restrooms

Hallway to Jane Bell Gathering
Space (Pulpit side) and first floor
of the Luther Building.

Childcare

Available for children
up to 4 years old.

Sunday School

9:30 a.m. for all ages.

Refreshments & Coffee

The Connector and Main Hall.

Hearing Assistance

Loop system and FM system
available in the Sanctuary.

AED/Narcan Locations

WMPC campus has five AED/
Narcan locations around
campus: Narthex- Sanctuary,
Main Hall-Edinburgh,
Lobby-Ross, Lobby-Calvin,
3rd floor-Luther

Live Streaming

Services available at
whitememorial.org.
Facebook & YouTube

Bulletins

Recycled after services as part
of our care for God's creation.



IN THE CHURCH TRIUMPHANT

Bradley Harold Mooock - January 9, 2026

WMPC family members: wife, Nina; children, Lauren and Billy

CONGRATULATIONS TO

Libby and Richard Staub on the birth of their grandchild, Alice Burkhardt Staub,
January 4, child of Mary Alice and Burk Staub, Durham, NC

MARRIAGES

Mackenzie Elisabeth Boone and William Collins Lowder,
December 23, son of Dawn and Henry Lowder

If you have experienced a birth, marriage or death you want to share with the church,
email Lisa Crumpler at lcrumpler@whitememorial.org

If you have a relative or church friend who is hospitalized,
call the Pastoral Care line 919-834-3425, ext. 210 or email Caroline Parker
at cparker@whitememorial.org so our pastoral staff can reach out.

If you have a pastoral care need outside of regular business hours,
call our after-hours pastor on call at 919-605-4593.

UNCLAIMED STOCK GIFTS

Will the generous donors of the following
stocks please email or call Jody Grayson
at 834-3425 ext. 204 to identify your gift
so that we can give you proper credit?
Allspring, American Express, AvidXchange
Holdings, Microsoft and Apple.

NOMINATIONS BEING ACCEPTED FOR NEW OFFICERS

The Churchwide Nominating Committee
starts meeting in mid-January to consider
nominations for church Elders and
Deacons, class of 2029. Nominations are
now being accepted. Please give prayerful
consideration to placing a church member
into nomination for these critical leadership
roles. The nomination form can be found
online. All recommendations must be
received by February 2, 2026.

THANK YOU LINDA NUNNALLEE

Come celebrate Linda Nunnallee and
thank her for the wonderful leadership she
provided during the transition of Outreach
and Community Engagement from Gloria
Johnson to Austin Vernon. We are deeply
grateful for Linda's many gifts and for the
way she kept our community engagement
strong throughout this season. Please stop
by the Hub **today between 12:00-1:30**
p.m. to share your appreciation.

LUTHER ELEVATOR TEMPORARILY OUT OF SERVICE

The Luther elevator is currently undergoing
repairs and will be unavailable for the
next couple of weeks. We are diligently
working to get the elevator operational and
apologize for any inconvenience this may
cause. Thank you for your patience and
understanding.

CHURCH FACILITIES CLOSED FOR MLK DAY

WMPC facilities will be closed Monday,
January 19 for Martin Luther King Jr. Day.

A Snapshot of What's Happening This Week at WMPC

Sunday, January 18

Exodus 18:13-23; 1 Corinthians 12:12-27

- **Linda Nunnallee Retirement Celebration**
12:00 p.m. - 1:30 p.m. | The Hub

Monday, January 19

Psalm 40:6-17; Exodus 12:1-13, 21-28

- **WMPC facilities closed**

Tuesday, January 20

Psalm 40:6-17; Isaiah 53:1-12

- **Men's Breakfast/Bible Study**
7:00 a.m. | Geneva Hall
- **Women's Breakfast/Circle**
7:00 a.m. | The Connector
- **Gentle Yoga**
8:30 a.m. | C200
- **Mahjong**
1:00 p.m. | The Hub

Wednesday, January 21

Psalm 40:6-17; Isaiah 48:12-21

- **Chair Yoga**
10:00 a.m. | C200
- **Lectio Divina**
11:00 a.m. | Virtual
- **Yin Yoga**
11:15 a.m. | C200
- **Note in the Pocket**
1:30 p.m. | Offsite
- **Pickleball**
2:00 p.m. | Pickard Hall
- **Churchwide Book Study**
6:30 p.m. | K200

LET'S PLAY MAHJONG

Tuesday January 20 | 1:00 p.m. | The Hub

We have a group playing Mahjong on the first and third Tuesdays of each month. We'd love for you to be part of this newly formed group. Whether you're a seasoned player or brand new to the game, everyone is welcome! Don't forget your mahjong card if you have one. Registration isn't necessary but if you'd like to receive a reminder email, contact Beth Moore at bmoore@whitememorial.org to be included in the Realm group.

PRESBYTERIAN WOMEN HONORARY LIFE MEMBERSHIP

An Honorary Life Membership in Presbyterian Women is conferred upon an individual for recognition of faithful service in some area of the church's work. Look around you...who do you see as one who gives honor and glory to God while serving Him actively and faithfully in our church and community? Who should be recognized in a special way? Whether this person works behind the scenes or in front, we want your nominations for this person now. Please submit your nominations, along with your nominee's history of service and your statement of why you are nominating this person on the form found on the website and in select places around campus. Return form to June Ann Ward at jaly257@nc.rr.com. Deadline for receipt of this nomination is February 11, 2026.

SCOTLAND PILGRIMAGE

October 15-25, 2026

Journey with Pastors Cate Church Norman and Tom Harris to the sacred landscapes of Scotland as we explore Celtic spirituality, Celtic saints, and our Reformed roots. We will travel to Edinburgh, the birthplace of our Presbyterian heritage; to the fishing village of Oban; to the island of Iona, the birthplace of Christianity in Scotland; and to other remarkable sites along the way. This pilgrimage is more than a trip. We will learn, worship, and grow together, deepening faith and building friendships as we walk holy ground together. Our July pilgrimage is already full, and October is filling quickly. [Click here for full details and cost.](#) Questions? Contact Caroline Parker at cparker@whitememorial.org.

"DEAR WILLIAM" CHURCHWIDE BOOK STUDY

The WMPC Mental Health & Wellness Ministry and Youth Ministry are partnering to host internationally acclaimed author David Magee via Zoom on **Wednesday, January 28**, to discuss his powerful memoir "Dear William." With honesty and heart, Magee shares his family's intergenerational struggle with substance abuse and mental health challenges. His poignant and uplifting message transforms tragedy into a call to hope and healing, inspiring a commitment to help others. Prior to the webinar, we will have a book discussion session on **Wednesday, January 21 at 6:30 p.m. in K200**. Registration is required, [click here to register](#).

Save the Date

SOUNDS ON OBERLIN CONCERT

Sunday February 22 | 3:00 p.m. | Sanctuary

The New Day Singers are a vocal ensemble bringing music alive, from choral classics to modern hits. Based in Greensboro, NC, this versatile a cappella ensemble has been performing since 2022. For Sounds on Oberlin, they will present a program encapsulating songs of comfort, joy, and the turning of time. The concert is free but donations are gladly accepted.

TOGETHER IN FAITH: AN EVENING FOR WOMEN WITH KATE BOWLER

Thursday February 26 | 6:00 p.m. | Christ Episcopal Church

All women are invited to join us for *Together in Faith: An Evening for Women with Kate Bowler*. Tickets are \$70.00 and scholarships are available.

CHRISTIAN FELLOWSHIP & SEARCHERS SUNDAY SCHOOL INVITE YOU TO A SPECIAL CLASS WITH DR. CARSON BRISSON

Sunday January 25 | 9:30 a.m. | C200

Dr. Carson Brisson, longtime professor at Union Theological Seminary in Richmond, Virginia, will be a guest speaker at White Memorial on **Sunday, January 25, 2026**. He will present a lecture on The Passion Narratives in the Four Gospels—Matthew, Mark, Luke, and John, a subject he taught frequently during his years at the seminary.

The lecture will take place at 9:30 a.m. in the Calvin Building, Room C200, and is hosted by the Christian Fellowship and Searchers classes. Following Dr. Brisson's visit, the class will begin an 18-lesson study of the Passion Narratives on February 1, featuring video teachings by the late Dr. Mickey Efrid.

Christopher recalls Dr. Brisson as one of his favorite professors at Union, noting that he is a dynamic and engaging lecturer. Please join us to hear Dr. Brisson for yourself. All are welcome!

THE CALL TO COURAGEOUS AND COMPASSIONATE LEADERSHIP: WMPC LEADERSHIP RETREAT

Saturday January 31 | 8:30 a.m. - 12:00 p.m. | Main Hall

All who are interested in growing as faithful leaders are invited to join us for a half-day Leadership Retreat led by keynote speaker Rev. Jill Duffield, Senior Pastor of FPC Greensboro. Jill will lead us in reflecting on our theme "The Call to Courageous and Compassionate Leadership," grounded in the wisdom of Philippians 4:8. This is not intended to be a leadership skills training event that you might encounter in the workplace or on a non-profit board. Rather, this retreat will focus specifically on spiritual leadership and what it means to lead in our community as people of faith. Breakfast will be provided and there is no cost to attend. Childcare is available with registration.

[Click here to register.](#)

Congregational Care + Health

DEPRESCRIBING TO OPTIMIZE MEDICATION USE

Tuesday January 27 | 11:30 a.m. - 1:00 p.m. | Geneva Hall

To learn more about deprescribing, WMPC Health Ministry and Mental Health and Wellness invite you to join them for a Lunch and Learn event with Dr. DeLon Canterbury on Tuesday, January 27 from 11:30 a.m. - 1:00 p.m. in Geneva Hall. If you would like to order a box lunch, the cost is \$16 (scholarship available). You are also welcome to bring your lunch or to come for only the program. Registration is required by January 22. Questions, please contact Health Ministry Coordinator, Martha Grove Hipskind at mghipskind@whitememorial.org. [Register here.](#)

CANCER COMPANIONS

Tuesday February 3 | 6:00 - 7:00 p.m. | Zoom

White Memorial is offering a new class beginning February 3 at 6 p.m. to have a safe place to share and learn. We'll meet 9 times – every Tuesday in the months of February and March for about an hour. All of the meetings can be attended on Zoom. [Register here.](#)

A Snapshot of What's Happening This Week at WMPC

Thursday, January 22

Psalm 27:1-6; 1 Samuel 1:1-20

- **Keenagers**
10:45 a.m. | Geneva Hall
- **Note in the Pocket**
1:30 p.m. | Offsite

Friday, January 23

Psalm 27:1-6; 1 Samuel 9:27-10:8

- **Pickleball**
2:00 p.m. | Pickard Hall
- **Women's Retreat**
Offsite

Saturday, January 24

Psalm 27:1-6; 1 Samuel 15:34-16:13

For more information about any of these events, please visit our website whitememorial.org or call the church office 919-834-3424.

Christopher Edmonston, Pastor
Cynthia Baggett, Director of Weekday School
Genevieve Brooks, Director of Family Ministry
Cate Church Norman, Associate Pastor for Pastoral Care
Claire Cox-Woodlief, Executive Director
Brock Downward, Director of Music Emeritus
Jennifer Eastman, Director of Young Children's Ministry
Jim Ferry, Parish Associate
Anne Galliher, Associate Pastor for
Congregational Engagement
Kelly Gold, Director of Children's and Youth Music
Tom Harris, Parish Associate
Martha Grove Hipskind, Health Ministry Coordinator
Kathy Howell, Communications Director
Lee Hunter, Pastoral Resident
Bailey Morton, Director of Youth Ministry
Eric Nanz, Associate Director of Music and Worship Arts
Linda Nunnallee, Director of Community Engagement
Grier Booker Richards, Associate Pastor for
Faith Formation and Worship Ministries
Art Ross, Pastor Emeritus
Judy Yates Siker, Parish Associate
Lynn Springfield, Director of Elementary Ministry
Colisha C. Stanford, StepUp Director
Martha Stevenson, Educator Emerita
Austin Vernon, Associate Pastor for Outreach and
Community Engagement
Eric Wall, Director of Music



We are a Stephen Ministry congregation.

Outreach

BACKPACK BUDDIES

Churchwide Collection

Each week when school is in session, our church provides food-insecure children at Oberlin Middle School and Lynn Road and Lacy Elementary Schools with healthy meals and snacks. Contact Jan Stewart, thestewarts2614@gmail.com. Amazon link is on website. If you'd prefer to shop you can pick up a shopping list on the Outreach room door (K100).

A PLACE AT THE TABLE

A Place at the Table is seeking compassionate volunteers to support their café team. Whether you enjoy welcoming guests, preparing meals, or lending a hand with dishes, there's a role for everyone. Volunteers help nourish more than just bodies—they help create a sense of love, dignity, and community. You can serve weekly, biweekly, or on a schedule that works best for you—flexibility is welcome and appreciated. Additional volunteers are urgently needed to help the café continue thriving. Come be part of something meaningful and make a difference with every shift. Learn more at tableraleigh.org.

Children + Youth

CIRCLE OF SECURITY PARENTING PROGRAM

Class Begins Sunday January 25 | R400

In collaboration and partnership with SAFEchild, WMPC is offering a program to parents/ caregivers and grandparents. At times, all parents feel lost or without a clue about what our child might need from us. Imagine what it might feel like if you were able to make sense of what your child was really asking from you. The Circle of Security Parenting™ program is based on decades of research about how secure parent-child relationships can be supported and strengthened.

Classes begin on Sunday, January 25- March 22 | R400

Program Cost: \$80.00 for a 1-person registration or \$120.00 for registering a 2-person family pair

This class is designed to uplift parents/guardians, not place a financial burden. If cost is what is holding you from registering, please reach out to [Kaitlyn Thornton](#) and she will distribute a scholarship to those who need.

[Register here.](#)

CHILDREN'S MOVIE NIGHT

Sunday February 1 | 5:00 - 7:00 p.m. | C200

Children in Kindergarten-3rd grade are invited to watch *Lilo and Stitch* from 5 – 7 p.m. in C200. Registration required. Bring your sleeping bag or blanket and join us for movie night in Calvin 200! Pizza is \$6.00 per person. [Click here to register.](#)

CLUB 4/5 WINTER OLYMPICS NIGHT

Sunday February 1 | 5:00 - 7:00 p.m. | C100

4th & 5th graders are invited to join us for Winter Olympics Night on February 1 at 5:00 p.m. Dinner is \$7.00 per person.

[Click here to register.](#)

YOUTH SUNDAY

Sunday February 8 | 9:30 & 11:00 a.m. | Sanctuary
(No 10:45 a.m. service)

PARENTING WORKSHOP

Sunday, February 1 | 5:00 -7:00 pm | Room C301

While the kids are at movie nights and youth group, parents are invited to gather for dinner, fellowship, and a workshop called "Navigating Friendships and Social Growth: Helping Kids Thrive" led by parent support specialist Laura Brimberry. We'll have pizza and salad for dinner (\$10 per person). Childcare is available in the nursery for children younger than kindergarten. [Register here.](#)

PLAY PALS

Play Pals is an after-preschool play group designed to foster both gross motor skill development and social-emotional growth in children ages 3-5. Led by a licensed pediatric physical therapist and a child development specialist, the group provides structured, play-based activities that encourage gross motor skills, coordination, confidence, and cooperative peer interaction.

Threes:

Classes for children in a 3s class are offered on Thursdays from 12:45-1:45 p.m.

Session One: January 8-March 15 (FULL)

Session Two: March 12-May 7 (No class April 2)

Fours & K:

Classes for children in a 4s or K class are offered on Tuesdays from 12:30-1:30 p.m.

Session One: January 6-March 3 (FULL)

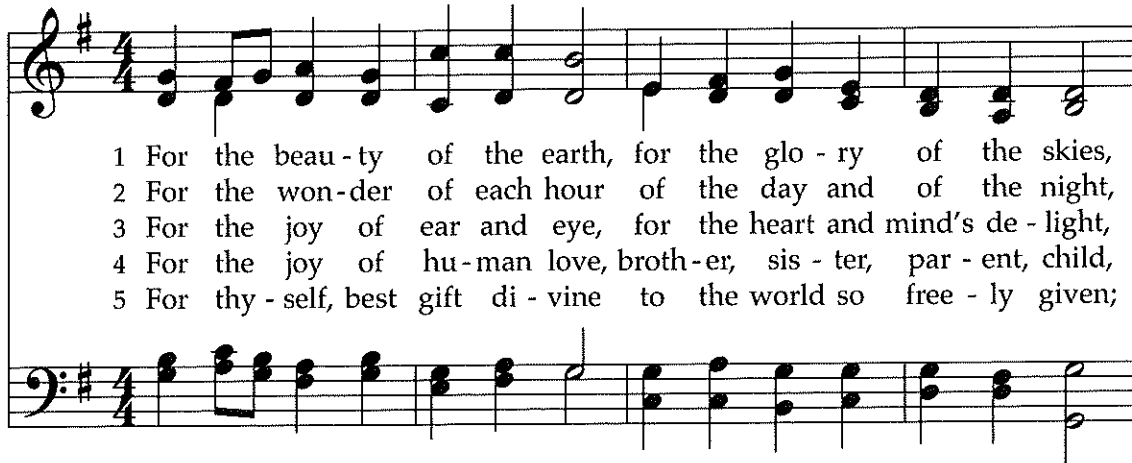
Session Two: March 10-May 5 (No class March 31)

Registration can be found on our website

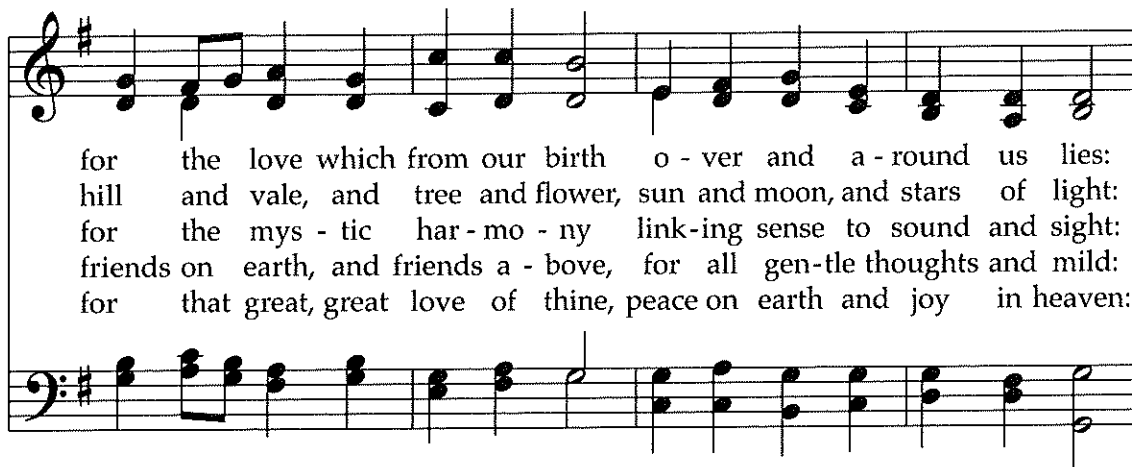
Cost: \$240/per session

For the Beauty of the Earth

14

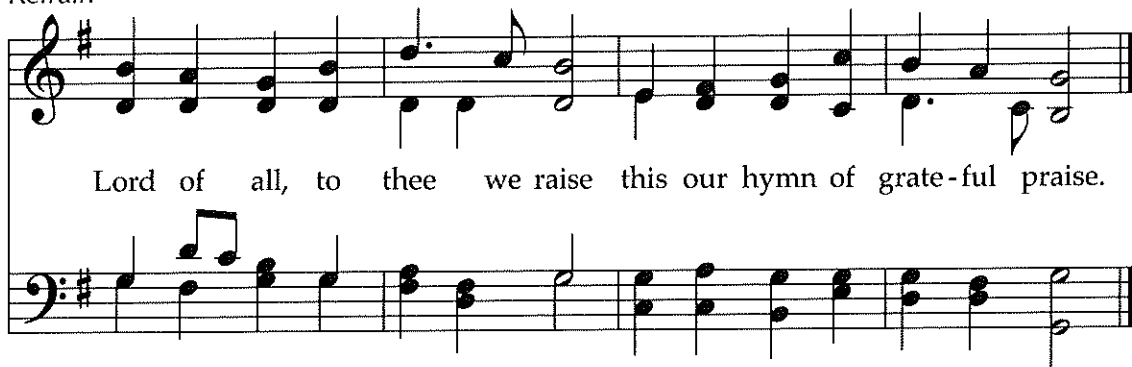


1 For the beau - ty of the earth, for the glo - ry of the skies,
 2 For the won - der of each hour of the day and of the night,
 3 For the joy of ear and eye, for the heart and mind's de - light,
 4 For the joy of hu - man love, broth - er, sis - ter, par - ent, child,
 5 For thy - self, best gift di - vine to the world so free - ly given;



for the love which from our birth o - ver and a - round us lies:
 hill and vale, and tree and flower, sun and moon, and stars of light:
 for the mys - tic har - mo - ny link - ing sense to sound and sight:
 friends on earth, and friends a - bove, for all gen - tle thoughts and mild:
 for that great, great love of thine, peace on earth and joy in heaven:

Refrain



Lord of all, to thee we raise this our hymn of grate - ful praise.

In the course of many revisions, the original eucharistic emphasis of this text has shifted to a hymn of thanksgiving for a wide range of human experience, with a Christological summation. It is set here to the tune that is customary in North America, though not elsewhere.

585

Glory to God

Gloria a Dios

1 Glo-ry to God, glo-ry to God, glo-ry in the high - est!
 2 Glo-ry to God, glo-ry to God, glo-ry to Christ Je - sus!
 3 Glo-ry to God, glo-ry to God, glo-ry to the Spir - it!

1 ¡Glo-ria a Dios, glo-ria a Dios, glo-ria en los cie - los!
 2 ¡Glo-ria a Dios, glo-ria a Dios, glo-ria a Je - su - cris - to!
 3 ¡Glo-ria a Dios, glo-ria a Dios, glo-ria al Es - pí - ri - tu!



To God be glo-ry for - ev - er! Al-le-lu-ia, A - men!
 ¡A Dios la glo-ria por siem - pre! ¡A - le - lu - ya, A - mén!



Al-le-lu-ia, A - men! Al-le-lu-ia, A - men!
 ¡A - le - lu - ya, A - mén! ¡A - le - lu - ya, A - mén!

Let Us Build a House

All Are Welcome

Capo 3: (A7)

(D)

(A)

(D)

(G)

(A)

(Bm)

C7

F

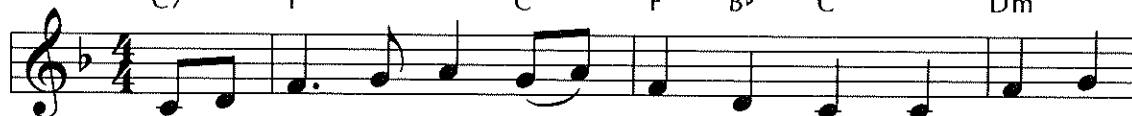
C

F

B^b

C

Dm



1 Let us build a house where love can dwell and all can
 2 Let us build a house where proph - ets speak, and words are
 3 Let us build a house where love is found in wa - ter,
 4 Let us build a house where hands will reach be - yond the
 5 Let us build a house where all are named, their songs and

(D)

(A)

(D)

(Bm7)

(Em)

(A)

F

C

F

Dm7

Gm

C



safe - ly live, a place where saints and chil - dren tell
 strong and true, where all God's chil - dren dare to seek
 wine, and wheat; a ban - quet hall on ho - ly ground
 wood and stone to heal and strength-en, serve and teach,
 vi - sions heard and loved and trea - sured, taught and claimed

(Em)

(A7)

(G)

(D)

(F[#]m)

(Bm)

Gm

C7

B^b

F

Am

Dm



how hearts learn to for - give. Built of hopes and dreams and
 to dream God's reign a - new. Here the cross shall stand as
 where peace and jus - tice meet. Here the love of God, through
 and live the Word they've known. Here the out - cast and the
 as words with - in the Word. Built of tears and cries and

(Em)

(A)

(D)

(G)

Gm

C

F

B^b

vi - sions, rock of faith and vault of grace; here the
 wit - ness and as sym - bol of God's grace; here as
 Je - sus, is re - vealed in time and space; as we
 strang - er bear the im - age of God's face; let us
 laugh - ter, prayers of faith and songs of grace; let this

THE CHURCH

Refrain

(D)

(G)

(F[#]7)

(Bm)

(Em)

(Bm)

F

B^b

A7

Dm

Gm

Dm



love of Christ shall end di - vi - sions:
 one we claim the faith of Je - sus:
 share in Christ the feast that frees us: all are wel - come;
 bring an end to fear and dan - ger:
 house pro-claim from floor to raf - ter:

(F[#]m)

(Em)

(D)

(Em) (A7)

(D) (G)

(D) (A7)

In Christ There Is No East or West 318

1 In Christ there is no east or west, in
 2 In Christ shall true hearts ev - ery - where their
 3 Join hands, dis - ci - ples of the faith, what -
 4 In Christ now meet both east and west; in

him no south or north, but one great fel - low -
 high com - mu - nion find; his ser - vice is the
 e'er your race may be. All chil - dren of the
 him meet south and north. All Christ - ly souls are

ship of love through - out the whole wide earth.
 gold - en cord close - bind - ing hu - man - kind.
 liv - ing God are sure - ly kin to me.
 one in him through - out the whole wide earth.

This text formed a very small part of an elaborate Christian missionary pageant in the early 20th century, yet it has endured while the grander aspects of that production have faded away. It is set to a simple 19th-century tune that does not get in the way of its message.