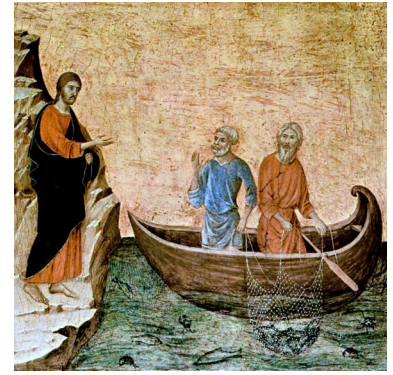


# WHITE MEMORIAL PRESBYTERIAN CHURCH

THIRD SUNDAY AFTER EPIPHANY  
January 25, 2026 | 9:30 & 11:00 a.m.

## WE GATHER TO WORSHIP

The sound of bells summons us to gather for worship.



*Christ Calling the Apostles  
Peter and Andrew* by Ducciodi  
Buoninsegna, (ca. 1319)

### Preparation for Worship

*God of compassion, you have shown us in Christ that your love is never ending. Enable us to love you with all our hearts and to love one another as Christ loved us. Grant this through our Lord Jesus Christ, who lives and reigns with you and the Holy Spirit, one God, forever and ever. Amen.*

### Welcome

Christopher Edmonston

### Call to Worship

Grier Booker Richards

The journey of faith begins with these words: “Come and follow me.”

They dropped their nets.

They dropped their plans for the day.

They left their lives behind.

The journey of faith continues with these words: ‘Come and follow me!’

### Hymn 726 The Summons

Eric Wall and Eric Nanz

### Confession and Assurance of God’s Grace

**Merciful God, we confess that though you have called us your beloved, we have a hard time believing you. We listen too much to the voices that shout “You are no good; you are ugly; you are worthless; you are despicable; you are nobody.” We fall into a trap of self-rejection and exhaust ourselves seeking to earn love and prove our worth. We ask that you forgive our futile, impulsive pursuits. Deepen our assurance that we are, indeed, loved by you, called by you, sent by you. Liberate us by making that truth the core of our identity. In Jesus’ name we pray.**

*Silent prayers*

### Sharing of the Peace of Christ

The peace of our Lord Jesus Christ be with you.

**And also with you.**

WORSHIP | EMBRACE | SERVE

*in the manner of Christ*

## WE PROCLAIM GOD'S WORD

Old Testament Reading Psalm 27:1, 4-9

pew Bible p. 476

New Testament Reading Matthew 4:12-23

pew Bible p. 3

The word of God for the people of God.  
**Thanks be to God.**

Sermon Caught

Jim Ferry

## WE RESPOND TO GOD'S WORD

Anthem The Miraculous Catch

John L. Bell, composer

This beautiful and haunting song is a dialogue between Jesus and the disciples he calls. Its tune is well-known as "Scarborough Fair." In the context of the call to follow, perhaps that tune's original text is still echoing: "are you going...?"

"James and Andrew, Peter and John,  
folk of temper, talent, and tide,  
your nets are empty, empty and bare.  
Cast them now on the opposite side."

"Jesus, you're only a carpenter's son:  
joints and joists are part of your trade,  
but ours the skill to harvest the deep. Why presume to come to our aid?"

"Friends of mine and kindred through love,  
I mean more than fishing for food.  
I call your skill to service my will, call your lives to harvest the good."

Stir the waters, Lord, stir the wind.  
Stir the hope that needs to be stretched.  
Stir up the love that needs to be found, stir the faith that needs to be fetched.

James and Andrew, Peter and John,  
and the ones who walked by his side,  
hear how the Lord calls each by their name, asking all to turn like the tide.

Prayers of the People and The Lord's Prayer

**Our Father, who art in heaven, hallowed be thy name,  
thy kingdom come, thy will be done, on earth as it is in heaven.  
Give us this day our daily bread; and forgive us our debts,  
as we forgive our debtors; and lead us not into temptation,  
but deliver us from evil.  
For thine is the kingdom and the power and the glory, forever. Amen.**

Hymn 292 As the Wind Song

WAIRUA TAPU

Charge & Benediction

This hymn, by Shirley Erena Murray and Lim Swee Hong, is less narrative and more evocative; it gives us many images of the ways the Spirit moves and invites unexpectedly. Nestled within its text is the phrase "...the heart made strangely warm"—an echo of John Wesley's exclamation at his moment of conversion and discipleship: "I felt my heart strangely warmed."

Music in today's service presented with permission under  
Podcast/Streaming License with One License number #A-714069

"The Miraculous Catch" by John L. Bell and Graham Maule;  
© 1987 Wild Goose Resource Group/Iona Community.



[Scan or click here to submit a prayer request.](#)



WELCOME TO WHITE MEMORIAL  
PRESBYTERIAN CHURCH, PC (USA)

We're so glad you are  
worshiping with us today.

#### Visiting?

Deacons are in the Narthex  
to offer a friendly greeting,  
answer questions, and provide  
directions.

#### Looking to Become a Member?

New members are received  
after attending the *Believing &  
Belonging @WMPC* class.  
Visit [whitememorial.org/join](http://whitememorial.org/join) or  
contact Elizabeth Viohl at  
ext. 206 for class dates,  
registration, and details.

#### Things to Know

##### Restrooms

Hallway to Jane Bell Gathering  
Space (Pulpit side) and first floor  
of the Luther Building.

##### Childcare

Available for children  
up to 4 years old.

##### Sunday School

9:30 a.m. for all ages.

##### Refreshments & Coffee

The Connector and Main Hall.

##### Hearing Assistance

Loop system and FM system  
available in the Sanctuary.

##### AED/Narcan Locations

WMPC campus has five AED/  
Narcan locations around  
campus: Narthex- Sanctuary,  
Main Hall-Edinburgh,  
Lobby-Ross, Lobby-Calvin,  
3rd floor-Luther

##### Live Streaming

Services available at  
[whitememorial.org](http://whitememorial.org).  
Facebook & YouTube

##### Bulletins

Recycled after services as part  
of our care for God's creation.



## Jays & CONCERNS

### IN THE CHURCH TRIUMPHANT

**Charles Robert Latimer - January 20, 2026**

Family member: wife JoAnne Latimer

### PRAYERS AND CHRISTIAN CONCERNS

**George Crane** on the death of his brother,  
Thomas Francis Crane, January 14, Baltimore, MD

**Steven Lilly and family** on the death of his mother,  
Nancy Cobb Lilly, January 18, Charleston, SC

If you have experienced a birth, marriage or death you want to share with the church,  
email Lisa Crumpler at [lcrumpler@whitememorial.org](mailto:lcrumpler@whitememorial.org)

If you have a relative or church friend who is hospitalized,  
call the Pastoral Care line 919-834-3425, ext. 210 or email Caroline Parker  
at [cparker@whitememorial.org](mailto:cparker@whitememorial.org) so our pastoral staff can reach out.

If you have a pastoral care need outside of regular business hours,  
call our after-hours pastor on call at 919-605-4593.

### UNCLAIMED STOCK GIFTS

Will the generous donors of the following  
stocks please email or call Jody Grayson  
at 834-3425 ext. 204 to identify your gift  
so that we can give you proper credit?  
Allspring, American Express, AvidXchange  
Holdings, Microsoft and Apple.

### NOMINATIONS BEING ACCEPTED FOR NEW OFFICERS

The Churchwide Nominating Committee  
starts meeting in mid-January to consider  
nominations for church Elders and  
Deacons, class of 2029. Nominations are  
now being accepted. Please give prayerful  
consideration to placing a church member  
into nomination for these critical leadership  
roles. The nomination form can be found  
online. **All recommendations must be  
received by February 2, 2026.**

### LUTHER ELEVATOR TEMPORARILY OUT OF SERVICE

The Luther elevator is currently undergoing  
repairs and will be unavailable for the  
next couple of weeks. We are diligently  
working to get the elevator operational and  
apologize for any inconvenience this may  
cause. Thank you for your patience and  
understanding.

## A Snapshot of What's Happening This Week at WMPC

### Sunday, January 25

*Psalm 27:1, 4-9; Matthew 4:12-23*

### Monday, January 26

*Psalm 27:7-14; Judges 6:11-24*

- **Outreach Sewing Committee**  
9:00 a.m. | C200
- **Bridge with Friends**  
1:00 p.m. | The Hub
- **Pickleball**  
2:00 p.m. | Pickard Hall
- **Tai Chi**  
5:30 p.m. | Pickard Hall
- **All are Welcome**  
7:00 p.m. | Davidson Chapel

### Tuesday, January 27

*Psalm 27:7-14; Judges 7:12-22*

- **Men's Breakfast/Bible Study**  
7:00 a.m. | Geneva Hall
- **Women's Breakfast/Circle**  
7:00 a.m. | The Connector
- **Gentle Yoga**  
8:30 a.m. | C200

### Wednesday, January 28

*Psalm 27:7-14; Genesis 49:1-2, 8-13, 21-26*

- **Chair Yoga**  
10:00 a.m. | C200
- **Lectio Divina**  
11:00 a.m. | Virtual
- **Yin Yoga**  
11:15 a.m. | C200
- **Note in the Pocket**  
1:30 p.m. | Offsite
- **Pickleball**  
2:00 p.m. | Pickard Hall
- **Churchwide Book Study**  
Webinar with David Magee  
6:30 p.m. | Geneva Hall

## PRESBYTERIAN WOMEN HONORARY LIFE MEMBERSHIP

An Honorary Life Membership in Presbyterian Women is conferred upon an individual for recognition of faithful service in some area of the church's work. Look around you...who do you see as one who gives honor and glory to God while serving Him actively and faithfully in our church and community? Who should be recognized in a special way? Whether this person works behind the scenes or in front, we want your nominations for this person now. Please submit your nominations, along with your nominee's history of service and your statement of why you are nominating this person on the form found on the website and in select places around campus. Return form to June Ann Ward at [jaly257@nc.rr.com](mailto:jaly257@nc.rr.com). Deadline for receipt of this nomination is February 11, 2026.

## SCOTLAND PILGRIMAGE

**October 15-25, 2026**

Journey with Pastors Cate Church Norman and Tom Harris to the sacred landscapes of Scotland as we explore Celtic spirituality, Celtic saints, and our Reformed roots. We will travel to Edinburgh, the birthplace of our Presbyterian heritage; to the fishing village of Oban; to the island of Iona, the birthplace of Christianity in Scotland; and to other remarkable sites along the way. This pilgrimage is more than a trip. We will learn, worship, and grow together, deepening faith and building friendships as we walk holy ground together. Our July pilgrimage is already full, and October is filling quickly. [Click here for full details and cost.](#) Questions? Contact Caroline Parker at [cparker@whitememorial.org](mailto:cparker@whitememorial.org).

## "DEAR WILLIAM" CHURCHWIDE BOOK STUDY

**Wednesday January 28 | 6:30 p.m. | Geneva Hall + Zoom**

The WMPC Mental Health & Wellness Ministry and Youth Ministry are partnering to host internationally acclaimed author David Magee via Zoom on **Wednesday, January 28**, to discuss his powerful memoir "Dear William." With honesty and heart, Magee shares his family's intergenerational struggle with substance abuse and mental health challenges. His poignant and uplifting message transforms tragedy into a call to hope and healing, inspiring a commitment to help others. Registration is required, [click here to register](#).

## Save the Date

## SOUNDS ON OBERLIN CONCERT

**Sunday February 22 | 3:00 p.m. | Sanctuary**

The New Day Singers are a vocal ensemble bringing music alive, from choral classics to modern hits. Based in Greensboro, NC, this versatile a cappella ensemble has been performing since 2022. For Sounds on Oberlin, they will present a program encapsulating songs of comfort, joy, and the turning of time. The concert is free but donations are gladly accepted.

## TOGETHER IN FAITH: AN EVENING FOR WOMEN WITH KATE BOWLER

**Thursday February 26 | 6:00 p.m. | Christ Episcopal Church**

All women are invited to join us for *Together in Faith: An Evening for Women with Kate Bowler*. Tickets are \$70.00 and scholarships are available. Contact Anne Galliher with questions at [agalliher@whitememorial.org](mailto:agalliher@whitememorial.org).

## THE CALL TO COURAGEOUS AND COMPASSIONATE LEADERSHIP: WMPC LEADERSHIP RETREAT

**Saturday January 31 | 8:30 a.m. - 12:00 p.m. | Main Hall**

All who are interested in growing as faithful leaders are invited to join us for a half-day Leadership Retreat led by keynote speaker Rev. Jill Duffield, Senior Pastor of FPC Greensboro. Jill will lead us in reflecting on our theme "The Call to Courageous and Compassionate Leadership," grounded in the wisdom of Philippians 4:8. This is not intended to be a leadership skills training event that you might encounter in the workplace or on a non-profit board. Rather, this retreat will focus specifically on spiritual leadership and what it means to lead in our community as people of faith. Breakfast will be provided and there is no cost to attend. Childcare is available with registration.

[Click here to register.](#)

## Congregational Care + Health

### ALL ARE WELCOME

**Monday January 26 | 7:00 p.m. | Chapel**

All Are Welcome is a faith-based small group that offers worship, fellowship and emotional and spiritual support for LGBTQ+ adults. You're invited to participate in the group as we create a safe space of welcome and engagement. We will meet on Monday, January 26 at 7:00 p.m. in Davidson Chapel. For more information, contact Kathy Hart at [hartmusic1@gmail.com](mailto:hartmusic1@gmail.com) or Lee Hunter at [lhunter@whitememorial.org](mailto:lhunter@whitememorial.org).

### DEPRESCRIBING TO OPTIMIZE MEDICATION USE - NEW DATE!

**Tuesday February 24 | 11:30 a.m. - 1:00 p.m. | Geneva Hall**

Because of weather concerns we are changing the date of this event to February 24. To learn more about deprescribing, WMPC Health Ministry and Mental Health and Wellness invite you to join them for a Lunch and Learn event with Dr. DeLon Canterbury on Tuesday, February 24 from 11:30 a.m. - 1:00 p.m. in Geneva Hall. If you would like to order a box lunch, the cost is \$16 (scholarship available). You are also welcome to bring your lunch or to come for only the program. Registration is required by February 19. Questions, please contact Health Ministry Coordinator, Martha Grove Hipskind at [mghipskind@whitememorial.org](mailto:mghipskind@whitememorial.org). [Register here.](#)

### CANCER COMPANIONS

**Tuesday February 3 | 6:00 - 7:00 p.m. | Zoom**

White Memorial is offering a new class beginning February 3 at 6 p.m. to have a safe place to share and learn. We'll meet 9 times - every Tuesday in the months of February and March for about an hour. All of the meetings can be attended on Zoom. [Register here.](#)

### BLOOD DRIVE

**Monday February 23 | 1:30 - 6:00 p.m. | Pickard Hall**

Be the lifeline patients need! Church members can also give their time on February 23rd to register donors and provide food and fellowship to the donors after their giving appointments. Whether you're a regular blood donor or considering it for the first time, events like these remind us that each act of kindness contributes to the greater good. We hope to see you there - help us give the gift of life. Register: [whitememorial.org/register](http://whitememorial.org/register).

## A Snapshot of What's Happening This Week at WMPC

**Thursday, January 29**

*Psalm 15; Deuteronomy 16:18-20*

- **Keenagers**  
10:45 a.m. | Geneva Hall
- **Note in the Pocket**  
1:30 p.m. | Offsite

**Friday, January 30**

*Psalm 15; Deuteronomy 24:17-25:4*

**Saturday, January 31**

*Psalm 15; Micah 3:1-4*

- **WMPC Leadership Retreat**  
with Rev. Jill Duffield  
8:30 a.m. | Main Hall

For more information about any of these events, please visit our website [whitememorial.org](http://whitememorial.org) or call the church office 919-834-3424.

---

**Christopher Edmonston**, Pastor  
**Cynthia Baggett**, Director of Weekday School  
**Genevieve Brooks**, Director of Family Ministry  
**Cate Church Norman**, Associate Pastor for Pastoral Care  
**Claire Cox-Woodlief**, Executive Director  
**Brock Downward**, Director of Music Emeritus  
**Jennifer Eastman**, Director of Young Children's Ministry  
**Jim Ferry**, Parish Associate  
**Anne Galliher**, Associate Pastor for  
Congregational Engagement  
**Kelly Gold**, Director of Children's and Youth Music  
**Tom Harris**, Parish Associate  
**Martha Grove Hipskind**, Health Ministry Coordinator  
**Kathy Howell**, Communications Director  
**Lee Hunter**, Pastoral Resident  
**Bailey Morton**, Director of Youth Ministry  
**Eric Nanz**, Associate Director of Music and Worship Arts  
**Linda Nunnallee**, Director of Community Engagement  
**Grier Booker Richards**, Associate Pastor for  
Faith Formation and Worship Ministries  
**Art Ross**, Pastor Emeritus  
**Judy Yates Siker**, Parish Associate  
**Lynn Springfield**, Director of Elementary Ministry  
**Colisha C. Stanford**, StepUp Director  
**Martha Stevenson**, Educator Emerita  
**Austin Vernon**, Associate Pastor for Outreach and  
Community Engagement  
**Eric Wall**, Director of Music



We are a Stephen Ministry congregation.



## Outreach

### BACKPACK BUDDIES

#### Churchwide Collection

Each week when school is in session, our church provides food-insecure children at Oberlin Middle School and Lynn Road and Lacy Elementary Schools with healthy meals and snacks. Contact Jan Stewart, [thestewarts2614@gmail.com](mailto:thestewarts2614@gmail.com). Amazon link is on website. If you'd prefer to shop you can pick up a shopping list on the Outreach room door (K100).

### A PLACE AT THE TABLE

A Place at the Table is seeking compassionate volunteers to support their café team. Whether you enjoy welcoming guests, preparing meals, or lending a hand with dishes, there's a role for everyone. Volunteers help nourish more than just bodies—they help create a sense of love, dignity, and community. You can serve weekly, biweekly, or on a schedule that works best for you—flexibility is welcome and appreciated. Additional volunteers are urgently needed to help the café continue thriving. Come be part of something meaningful and make a difference with every shift. Learn more at [tablealeigh.org](http://tablealeigh.org).

## Children + Youth

### CHILDREN'S MOVIE NIGHT

**Sunday February 1 | 5:00 - 7:00 p.m. | C200**

Children in Kindergarten-3rd grade are invited to watch *Lilo and Stitch* from 5 – 7 p.m. in C200. Registration required. Bring your sleeping bag or blanket and join us for movie night in Calvin 200! Pizza is \$6.00 per person. [Click here to register](#).

### CLUB 4/5 WINTER OLYMPICS NIGHT

**Sunday February 1 | 5:00 - 7:00 p.m. | C100**

4th & 5th graders are invited to join us for Winter Olympics Night on February 1 at 5:00 p.m. Dinner is \$7.00 per person. [Click here to register](#). Please note: Registration closes at noon on Friday, January 30.

### YOUTH SUNDAY

**Sunday February 8 | 9:30 & 11:00 a.m. | Sanctuary**  
(No 10:45 a.m. service)

### PARENTING WORKSHOP

**Sunday February 1 | 5:00 - 7:00 pm | C301**

While the kids are at movie nights and youth group, parents are invited to gather for dinner, fellowship, and a workshop called "Navigating Friendships and Social Growth: Helping Kids Thrive" led by parent support specialist Laura Brimberry. We'll have pizza and salad for dinner (\$10 per person). Childcare is available in the nursery for children younger than kindergarten. [Register here](#).

### PLAY PALS

Play Pals is an after-preschool play group designed to foster both gross motor skill development and social-emotional growth in children ages 3-5. Led by a licensed pediatric physical therapist and a child development specialist, the group provides structured, play-based activities that encourage gross motor skills, coordination, confidence, and cooperative peer interaction.

#### Threes:

Classes for children in a 3s class are offered on Thursdays from 12:45-1:45 p.m.

Session One: January 8-March 15 (FULL)

Session Two: March 12-May 7 (No class April 2)

#### Fours & K:

Classes for children in a 4s or K class are offered on Tuesdays from 12:30-1:30 p.m.

Session One: January 6-March 3 (FULL)

Session Two: March 10-May 5 (No class March 31)

Registration can be found on our website

Cost: \$240/per session

# 726 Will You Come and Follow Me

## The Summons

Capo 3: (D) (A7) (Bm) (Em7) (Asus) (A)  
F C7 Dm Gm7 Csus C

1 "Will you come and fol - low me if I but call your name?  
2 "Will you leave your-self be-hind if I but call your name?  
3 "Will you let the blind - ed see if I but call your name?  
4 "Will you love the 'you' you hide if I but call your name?  
5 Lord, your sum-mons ech - oes true when you but call my name.

(D) (A7) (Bm) (Em7) (G) (D)  
F C7 Dm Gm7 Bb F

Will you go where you don't know and nev - er be the same?  
Will you care for cruel and kind and nev - er be the same?  
Will you set the pris-oners free and nev - er be the same?  
Will you quell the fear in - side and nev - er be the same?  
Let me turn and fol - low you and nev - er be the same.

(Em7) (G) (F#m7) (G) (Asus) (A)  
Gm7 Bb Am7 Bb Csus C

Will you let my love be shown; will you let my name be known;  
Will you risk the hos - tile stare should your life at-tract or scare?  
Will you kiss the lep - er clean, and do such as this un - seen,  
Will you use the faith you've found to re-shape the world a - round,  
In your com - pa - ny I'll go where your love and foot-steps show.

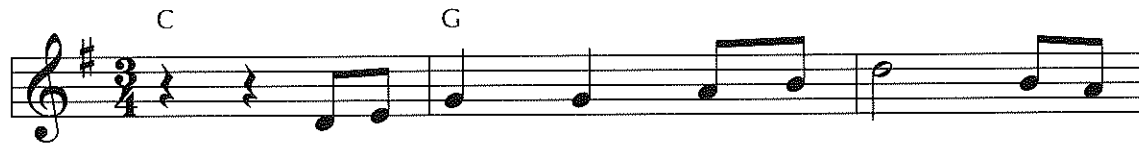
(D) (A7) (Bm) (Em7) (G) (D)  
F C7 Dm Gm7 Bb F

will you let my life be grown in you and you in me?"  
Will you let me an - swer prayer in you and you in me?"  
and ad - mit to what I mean in you and you in me?"  
through my sight and touch and sound in you and you in me?"  
Thus I'll move and live and grow in you and you in me.

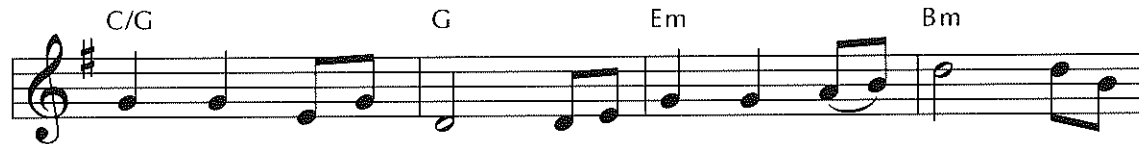
The first four stanzas of this ballad-like hymn are understood to be in the voice of Christ, with the fifth reflecting the individual singer's response. Created for this traditional Scottish tune, the text was written to mark the conclusion of a youth volunteer's time of ministry.

# As the Wind Song

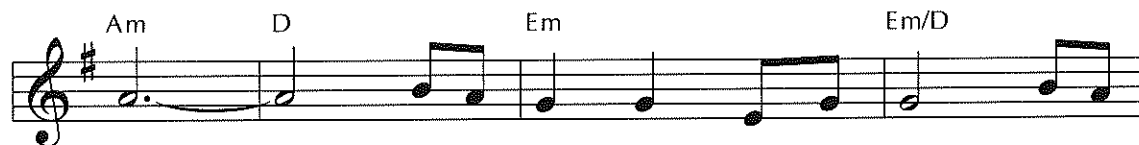
## 風之頌



1 As the wind song through the trees, as the  
 2 As the rain - bow af - ter rain, as the  
 1 風之頌, 林中吹送, 輕風之  
 2 彩之虹, 雨後高懸, 生之



stir - ring of the breeze, so it is with the Spir - it of  
 hope that's born a - gain, so it is with the Spir - it of  
 送, 心中振動, 上主的靈如風吹  
 盼, 人間再現, 上主的靈如風吹



God, as the heart made strange-ly warm, as the  
 God, as the green in the spring, as a  
 送; 心溫暖, 奇異難明, 風浪  
 送; 春天裡, 青山綠水, 線上



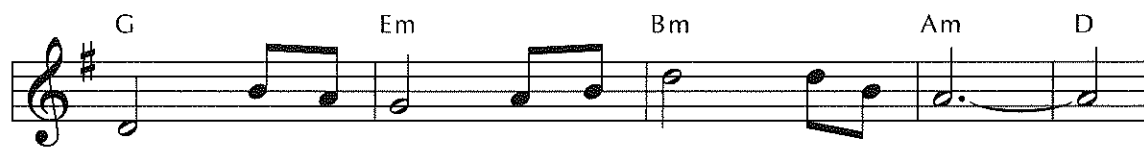
voice with - in the storm, so it is with the Spir - it of  
 kite on a string, so it is with the Spir - it of  
 中, 靜聽主聲, 上主的靈如風吹  
 繫飛揚風箏, 上主的靈如風吹



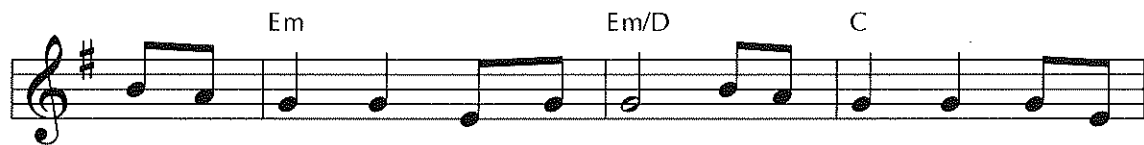
God. Nev - er seen, ev - er known where this wind has  
 God, mak - ing worlds that are new, mak - ing peace come  
 送; 眼不見, 心未明, 風來去何  
 送; 大地萬象更新, 和平終實

Reversing the usual order, this hymn began with the music rather than the words. The composer (from Singapore) sent this tune to the author (in New Zealand) to see what text it might inspire from her. She also suggested the tune name, a Maori phrase meaning "Holy Spirit."





blown bring-ing life, bring-ing power to the world,  
 true, bring-ing gifts, bring-ing love to the world,  
 蹤, 給 世 人 賜 生 命 加 力 量;  
 現, 給 世 人 帶 來 愛 和 禮 物;



as the danc - ing tongues of fire, as the soul's most deep de -  
 as the ris - ing of the yeast, as the wine at the  
 火 之 舌, 跳 動 飛 舞, 心 深 處, 朝 思 暮  
 麵 之 酵, 悄 然 膨 升, 盛 宴 上, 醇 香 美



sire, so it is with the Spir - it of God.  
 feast, so it is with the Spir - it of God.  
 想, 上 主 的 靈 如 風 吹 送。  
 酒, 上 主 的 靈 如 風 吹 送。