

# WHITE MEMORIAL

## PRESBYTERIAN CHURCH

FOURTH SUNDAY AFTER EPIPHANY  
February 1, 2026

### WE GATHER TO WORSHIP

The sound of bells summons us to gather for worship.

#### Preparation for Worship

*O God, glorious and faithful, to those who seek you with a sincere heart you reveal the beauty of your face. Strengthen us in faith to embrace the mystery of the cross, and open our hearts to its transfiguring power; that, clinging in love to your will for us, we may walk the path of discipleship as followers of your Son, Jesus Christ our Lord, who lives and reigns with you and the Holy Spirit, one God, forever and ever. Amen.*

#### Welcome

Christopher Edmonston

#### Call to Worship

What does the Holy One require of us?  
**To be just, kind, and humble before God.**  
Give thanks to God with your whole heart.  
**Great are the works of the Lord.**

#### Anthem God Welcomes All

Children's Choir

#### Confession and Pardon

Cate Church Norman

**Most merciful God, we confess that we have sinned against you in thought, word, and deed. Blinded by our expectations, we easily miss how your son, Jesus, fulfilled your law and offered your grace to all people. Help us to open our hearts that we would be open to your love and seek it above all other things. Your love – flowing to us and through us – is the divine currency of heaven and earth. By your Spirit, transform our lives and renew us for service and celebration. Blessed are we indeed to have knowledge of the love and Spirit of God! All this we pray in the name of Jesus.**

*Silent prayers*

#### Sharing of the Peace of Christ

The peace of our Lord Jesus Christ be with you.  
**And also with you.**



*Sermon on the Mount, Jesus Mafa, Cameroon ©1973*

**Words in bold** are for everyone to say or sing.

WORSHIP | EMBRACE | SERVE

*in the manner of Christ*

## WE PROCLAIM GOD'S WORD

Old Testament Reading Micah 6:1-8

Austin Vernon  
pew Bible p. 816

New Testament Reading Matthew 5:1-12

pew Bible p. 4

The word of God for the people of God.  
**Thanks be to God.**

Sermon Major in the Majors

Christopher Edmonston

## WE RESPOND TO GOD'S WORD

Anthem This Little Light

Children's Choir

Prayers of the People and The Lord's Prayer

**Our Father, who art in heaven, hallowed be thy name,  
thy kingdom come, thy will be done, on earth as it is in heaven.  
Give us this day our daily bread; and forgive us our debts,  
as we forgive our debtors; and lead us not into temptation,  
but deliver us from evil.  
For thine is the kingdom and the power and the glory, forever. Amen.**

Hymn 822 When We Are Living/Pues si vivimos

SOMOS DEL SEÑOR

Charge & Benediction

Anthem We Will Walk with God

Children's Choir

Music in today's service presented with permission under Podcast/Streaming License with  
One License number #A-714069



[Scan or click here to submit a prayer request.](#)

**AFTER HOURS PASTOR ON CALL: 919-605-4593**

Each Sunday we offer three opportunities for you to worship with us at White Memorial in the Sanctuary and OnPoint@1704 in the Main Hall. While you will notice differences in music, location, and worship leadership among our different services, what unites us in our worship is our scripture, liturgy, and sermon. All services use the same Call to Worship, Prayer of Confession, readings from Scripture, and Affirmation of Faith.



WELCOME TO WHITE MEMORIAL  
PRESBYTERIAN CHURCH, PC (USA)

We're so glad you are  
worshipping with us today.

#### Visiting?

Deacons are in the Narthex  
to offer a friendly greeting,  
answer questions, and provide  
directions.

#### Looking to Become a Member?

New members are received  
after attending the *Believing &  
Belonging @WMPC* class.  
Visit [whitememorial.org/join](http://whitememorial.org/join) or  
contact Elizabeth Viohl at  
ext. 206 for class dates,  
registration, and details.

#### Things to Know Restrooms

Hallway to Jane Bell Gathering  
Space (Pulpit side) and first floor  
of the Luther Building.

#### Childcare

Available for children  
up to 4 years old.

#### Sunday School

9:30 a.m. for all ages.

#### Refreshments & Coffee

The Connector and Main Hall.

#### Hearing Assistance

Loop system and FM system  
available in the Sanctuary.

#### AED/Narcan Locations

WMPC campus has five AED/  
Narcan locations around  
campus: Narthex- Sanctuary,  
Main Hall-Edinburgh,  
Lobby-Ross, Lobby-Calvin,  
3rd floor-Luther

#### Live Streaming

Services available at  
[whitememorial.org](http://whitememorial.org).  
Facebook & YouTube

#### Bulletins

Recycled after services as part  
of our care for God's creation.



## PRAYERS AND CHRISTIAN CONCERNS TO

**Margaret Herring and family** on the death of her mother,  
Eva Margaret Townsend Herring, January 11, Dunn, NC

**Sheldon Fox and family** on the death of his mother,  
Esther Fox, January 24, Louisville, KY

If you have experienced a birth, marriage or death you want to share with the church,  
email Lisa Crumpler at [lcrumpler@whitememorial.org](mailto:lcrumpler@whitememorial.org)

If you have a relative or church friend who is hospitalized,  
call the Pastoral Care line 919-834-3425, ext. 210 or email Caroline Parker  
at [cparker@whitememorial.org](mailto:cparker@whitememorial.org) so our pastoral staff can reach out.

If you have a pastoral care need outside of regular business hours,  
call our after-hours pastor on call at 919-605-4593.

## NOMINATIONS BEING ACCEPTED FOR NEW OFFICERS

The Churchwide Nominating Committee  
starts meeting in mid-January to con-  
sider nominations for church Elders and  
Deacons, class of 2029. Nominations are  
now being accepted. Please give prayerful  
consideration to placing a church member  
into nomination for these critical leadership  
roles. The nomination form can be found  
online. **All recommendations must be  
received by February 10, 2026.**

## LUTHER ELEVATOR TEMPORARILY OUT OF SERVICE

The Luther elevator is currently undergoing  
repairs and will be unavailable for the next  
couple of weeks. We are diligently working  
to get the elevator operational and apolo-  
gize for any inconvenience this may cause.  
Thank you for your patience and under-  
standing.

## ASH WEDNESDAY SERVICE

**Wednesday February 18 | 6:30 p.m. |  
Sanctuary**

Join together with friends along Oberlin  
Road for our annual Ash Wednesday ser-  
vice. The service will be February 18 at 6:30  
p.m. in the sanctuary. We will celebrate the  
Lord's Supper and have the imposition of  
ashes. This is a great time of worship and  
shared faith. Childcare will be available for  
ages three and younger.

## LENTEN CONTEMPLATIVE RETREAT

**Becoming Ourselves: The Psalms as  
Honest Prayer**

**Thursday February 19 | 9:00 a.m. - 4:00  
p.m. | WMPC campus | [Register](#)**

**Shorter virtual option: Wednesday Febru-  
ary 25 | 9:30 a.m. - 12:00 p.m. | [Register](#)**

Join Associate Pastor Cate Church Norman,  
Pastoral Resident Lee Hunter and Guest  
Leader and Director of Peterson House,  
John Rogers, as we prepare for the sea-  
son of Lent with an all-day contemplative  
retreat on our church campus. We'll dive  
deep into the Psalms and focus on the life  
and writings of pastor/theologian Eugene  
Peterson. This is a wonderful opportunity  
to engage with friends (old and new) and to  
get spiritually centered through scripture,  
prayer and spiritual practices. The cost to  
attend is \$35 and includes lunch. Scholar-  
ships are available. Registration open.

We will also offer a shorter virtual option  
on Wednesday, February 25. The cost to  
attend is \$10.00. Please choose between the  
in-person or virtual retreat.

## A Snapshot of What's Happening This Week at WMPC

### Sunday, February 1

*Micah 6:1-8; Matthew 5:1-12*

- Virtual Worship Service
- WMPC Campus Closed

### Monday, February 2

*Psalms 37:1-17; Ruth 1:1-18*

- Bridge with Friends  
1:00 p.m. | The Hub
- Pickleball  
2:00 p.m. | Pickard Hall
- Tai Chi  
5:30 p.m. | Pickard Hall

### Tuesday, February 3

*Psalms 37:1-17; Ruth 2:1-16*

- Men's Breakfast/Bible Study  
7:00 a.m. | Geneva Hall
- Women's Breakfast/Circle  
7:00 a.m. | The Connector
- Gentle Yoga  
8:30 a.m. | C200
- Mahjong  
1:00 p.m. | The Hub
- Cancer Companions  
6:00 p.m. | Virtual

### Wednesday, February 4

*Psalms 37:1-17; Ruth 3:1-13; 4:13-22*

- Chair Yoga  
10:00 a.m. | C200
- Shepherd's Table  
10:00 a.m. | Offsite
- Lectio Divina  
11:00 a.m. | Virtual
- Yin Yoga  
11:15 a.m. | C200
- Note in the Pocket  
1:30 p.m. | Offsite
- Pickleball  
2:00 p.m. | Pickard Hall

## WOMEN'S MONTHLY LUNCHEON

**Monday February 9 | 12:00 p.m. | Main Hall**

Please plan to join us in Main Hall for a lovely program with Earl L. Ijames, Curator of the North Carolina Museum of History: "Naval Stores & The Real Tar Heels: History to Restoration of the Long Leaf Pine Forest" [Register for lunch by noon, Tuesday, February 3](#). Livestream of the presentation will be available.

## PRESBYTERIAN WOMEN HONORARY LIFE MEMBERSHIP

An Honorary Life Membership in Presbyterian Women is conferred upon an individual for recognition of faithful service in some area of the church's work. Look around you...who do you see as one who gives honor and glory to God while serving Him actively and faithfully in our church and community? Who should be recognized in a special way? Whether this person works behind the scenes or in front, we want your nominations for this person now. Please submit your nominations, along with your nominee's history of service and your statement of why you are nominating this person on the form found on the website and in select places around campus. Return form to June Ann Ward at [jaly257@nc.rr.com](mailto:jaly257@nc.rr.com). **Deadline for receipt of this nomination is February 11, 2026.**

## SCOTLAND PILGRIMAGE

**October 15-25, 2026**

Journey with Pastors Cate Church Norman and Tom Harris to the sacred landscapes of Scotland as we explore Celtic spirituality, Celtic saints, and our Reformed roots. We will travel to Edinburgh, the birthplace of our Presbyterian heritage; to the fishing village of Oban; to the island of Iona, the birthplace of Christianity in Scotland; and to other remarkable sites along the way. This pilgrimage is more than a trip. We will learn, worship, and grow together, deepening faith and building friendships as we walk holy ground together. Our July pilgrimage is already full, and October is filling quickly. [Click here for full details and cost](#). Questions? Contact Caroline Parker at [cparker@whitememorial.org](mailto:cparker@whitememorial.org).

## Save the Date

## SOUNDS ON OBERLIN CONCERT

**Sunday February 22 | 3:00 p.m. | Sanctuary**

The New Day Singers are a vocal ensemble bringing music alive, from choral classics to modern hits. Based in Greensboro, NC, this versatile a cappella ensemble has been performing since 2022. For Sounds on Oberlin, they will present a program encapsulating songs of comfort, joy, and the turning of time. The concert is free but donations are gladly accepted.

## TOGETHER IN FAITH: AN EVENING FOR WOMEN WITH KATE BOWLER

**Thursday February 26 | 6:00 p.m. | Christ Episcopal Church**

Join us at Christ Church as we welcome Kate Bowler, a Duke University professor, award-winning podcast host, and four-time New York Times bestselling author. Together in Faith is hosted by four local congregations: Christ Episcopal Church, Hayes Barton United Methodist Church, St. Michael's Episcopal Church and White Memorial Presbyterian Church. The evening will include a reception, brief service of worship, and keynote presentation from Kate. Child-care is available by request. Tickets are \$70.00 and scholarships are available. [Contact Anne Galliher with questions.](#) [Register here.](#)

## CHRISTIAN FELLOWSHIP & SEARCHERS SUNDAY SCHOOL INVITE YOU TO A SPECIAL CLASS WITH DR. CARSON BRISSON

**Sunday February 15 | 9:30 a.m. | C200**

Dr. Carson Brisson, longtime professor at Union Theological Seminary in Richmond, Virginia, will be a guest speaker at White Memorial on Sunday, February 15, 2026 (a reschedule of the original 1/25/26 date). He will present a lecture on The Passion Narratives in the Four Gospels—Matthew, Mark, Luke, and John, a subject he taught frequently during his years at the seminary.

The lecture will take place at 9:30 a.m. in the Calvin Building, Room C200, and is hosted by the Christian Fellowship and Searchers classes. The Christian Fellowship Class is beginning an 18-lesson study of the Passion Narratives on February 1, featuring video teachings by the late Dr. Mickey Efird.

Christopher recalls Dr. Brisson as one of his favorite professors at Union, noting that he is a dynamic and engaging lecturer. Please join us to hear Dr. Brisson for yourself. All are welcome!

## A Snapshot of What's Happening This Week at WMPC

**Thursday, February 5**

*Psalm 112:1-9; Deuteronomy 4:1-14*

- **Keenagers**  
10:45 a.m. | Geneva Hall
- **Note in the Pocket**  
1:30 p.m. | Offsite

**Friday, February 6**

*Psalm 112:1-9; Isaiah 29:1-12*

- **WDS Valentine's dance**  
5:00 p.m. | Pickard Hall

**Saturday, February 7**

*Psalm 112:1-9; Isaiah 29:13-16*


For more information about any of these events, please visit our website [whitememorial.org](http://whitememorial.org) or call the church office 919-834-3424.

## Congregational Care + Health

### CANCER COMPANIONS

**Tuesday February 3 | 6:00 - 7:00 p.m. | Zoom**

White Memorial is offering a new class beginning February 3 at 6 p.m. to have a safe place to share and learn. We'll meet 9 times – every Tuesday in the months of February and March for about an hour. All of the meetings can be attended on Zoom. [Register here.](#)



**Deprescribing to  
Optimize Medication Use**

**Lunch &  
Learn**  
with Dr. DeLon Canterbury

**NEW DATE!**  
(Due to weather)  
Tuesday | February 24  
11:30 a.m. | Geneva Hall

Registration required by February 19  
[whitememorial.org/register](http://whitememorial.org/register)

Christopher Edmonston, Pastor  
Cynthia Baggett, Director of Weekday School  
Genevieve Brooks, Director of Family Ministry  
Cate Church Norman, Associate Pastor for Pastoral Care  
Claire Cox-Woodlief, Executive Director  
Brock Downward, Director of Music Emeritus  
Jennifer Eastman, Director of Young Children's Ministry  
Jim Ferry, Parish Associate  
Anne Galliher, Associate Pastor for  
Congregational Engagement  
Kelly Gold, Director of Children's and Youth Music  
Tom Harris, Parish Associate  
Martha Grove Hipskind, Health Ministry Coordinator  
Kathy Howell, Communications Director  
Lee Hunter, Pastoral Resident  
Bailey Morton, Director of Youth Ministry  
Eric Nanz, Associate Director of Music and Worship Arts  
Linda Nunnallee, Director of Community Engagement  
Grier Booker Richards, Associate Pastor for  
Faith Formation and Worship Ministries  
Art Ross, Pastor Emeritus  
Judy Yates Siker, Parish Associate  
Lynn Springfield, Director of Elementary Ministry  
Colisha C. Stanford, StepUp Director  
Martha Stevenson, Educator Emerita  
Austin Vernon, Associate Pastor for Outreach and  
Community Engagement  
Eric Wall, Director of Music



We are a Stephen Ministry congregation.



## Outreach

### FEBRUARY SUNDAY SERVICE POP-UP PROJECT

**Sunday February 22 | 10:15 - 11:00 a.m. | Outside Main Hall**

Join us in supporting National Hot Breakfast Month by assembling breakfast bags for Meals on Wheels.

### COMMUNITY AGENCY PANEL DISCUSSION

**Wednesday February 25 | 6:00 p.m. | Geneva Hall**

White Memorial will host two Wednesday evening panel discussions in partnership with several of our community service agencies. These gatherings are open to the entire congregation and offer an opportunity to learn more about the important work our partner agencies are doing in our community. There will be time for questions and conversation after the panel discussions. Please join us for the first one on Wednesday, February 25 at 6:00 p.m. We hope you'll join us for dinner before the discussion. Register for Wednesday Together Dinner at [white.memorial.org/register](http://white.memorial.org/register).

### BACKPACK BUDDIES

#### Churchwide Collection

Each week when school is in session, our church provides food-insecure children at Oberlin Middle School and Lynn Road and Lacy Elementary Schools with healthy meals and snacks. Contact Jan Stewart, [thestewarts2614@gmail.com](mailto:thestewarts2614@gmail.com). Amazon link is on website. If you'd prefer to shop you can pick up a shopping list on the Outreach room door (K100).

### A PLACE AT THE TABLE

A Place at the Table is seeking compassionate volunteers to support their café team. Whether you enjoy welcoming guests, preparing meals, or lending a hand with dishes, there's a role for everyone. Volunteers help nourish more than just bodies—they help create a sense of love, dignity, and community. You can serve weekly, biweekly, or on a schedule that works best for you—flexibility is welcome and appreciated. Additional volunteers are urgently needed to help the café continue thriving. Come be part of something meaningful and make a difference with every shift. Learn more at [tableraleigh.org](http://tableraleigh.org).

## Children + Youth

### YOUTH SUNDAY

**Sunday February 8 | 9:30 & 11:00 a.m. | Sanctuary**  
(No 10:45 a.m. service)

### BAPTISM AND BELONGING: YOUR BABY'S FAITH JOURNEY AT WMPC

**Sunday February 22 | 9:30 -10:30 a.m. | Room C301**

Baptism and Belonging is a workshop for parents of children under three who would like to present their children for Baptism. In this workshop, parents learn about the significance of the Sacrament of Baptism, go over logistical details, connect with fellow parents, and get an overview of a child's faith journey at WMPC. Expectant parents are also invited to attend. [Register here.](#)

### PLAY PALS

Play Pals is an after-preschool play group designed to foster both gross motor skill development and social-emotional growth in children ages 3-5. Led by a licensed pediatric physical therapist and a child development specialist, the group provides structured, play-based activities that encourage gross motor skills, coordination, confidence, and cooperative peer interaction.

#### Threes:

Classes for children in a 3s class are offered on Thursdays from 12:45-1:45 p.m.

Session Two: March 12-May 7 (No class April 2)

#### Fours & K:

Classes for children in a 4s or K class are offered on Tuesdays from 12:30-1:30 p.m.

Session Two: March 10-May 5 (No class March 31)

Registration can be found on our website

Cost: \$240/per session

## When We Are Living

822

*Pues si vivimos*

1 When we are liv - ing, it is in Christ Je - sus,  
 2 Through all our liv - ing, we our fruits must give.  
 3 'Mid times of sor - row and in times of pain,  
 4 A - cross this wide world, we shall al - ways find

1 *Pues si vi - vi - mos, pa - ra Él vi - vi - mos,*  
 2 *En es - ta vi - da fru - tos hay que dar*  
 3 *En la tris - te - za y en el do - lor,*  
 4 *En es - te mun - do por do - quier ha - brá*



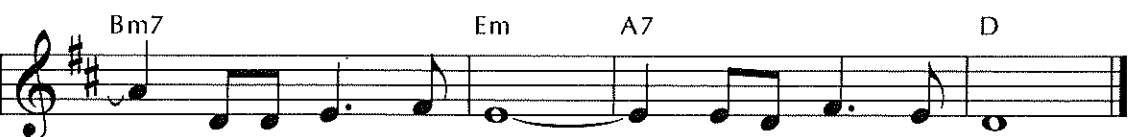
and when we're dy - ing, it is in the Lord.  
 Good works of ser - vice are for of - fer - ing.  
 when sens - ing beau - ty or in love's em-brace,  
 those who are cry - ing with no peace of mind,

*y si mo - ri - mos pa - ra Él mo - ri - mos.*  
*y bue - nas o - bras he - mos de o - fren - dar.*  
*en la be - lle - za y en el a - mor,*  
*gen - te que llo - ra y sin con - so - lar.*



Both in our liv - ing and in our dy - ing,  
 When we are giv - ing, or when re - ceiv - ing,  
 wheth - er we suf - fer, or sing re - joic - ing,  
 but when we help them, or when we feed them,

*Sea que vi - va - mos o que mu - ra - mos,*  
*Sea ya que de - mos o que re - ci - ba - mos,*  
*sea que su - fra - mos o que go - ce - mos,*  
*Sea que a - yu - de - mos o que a - li - men - te - mos,*



we be-long to God; we be-long to God.  
*so - mos del Se - ñor, so - mos del Se - ñor.*

This hymn began as an orally transmitted stanza reflecting on Romans 14:7-8 and was expanded by a Spanish-language hymnal committee to offer additional examples of the many dimensions of life, thereby strengthening the recurring affirmation that we belong to God through them all.