

**TOGETHER IN FAITH. TOGETHER IN MISSION. TOGETHER IN LIFE.**

PHASE 1A NARTHEX CONCEPT RECOMMENDATION | JANUARY 11, 2026  
ST. PAUL'S LUTHERAN CHURCH | CONCORDIA, MO

We are united by Jesus and His gifts.

*Ephesians 4:4–6; 1 Corinthians 12:1–27; Romans 12:10–13*

We are united in God-given purpose.

*Matthew 28:18–20; Acts 1:8*

We are united in Christian fellowship and life-together.

*Acts 2:42–47; John 13:34–35; Matthew 22:37–39*

**RECOMMENDATION**

In our 2024–2029 Ministry Plan, one of our congregation's Ministry Outcomes was to “foster and strengthen Christ-centered relationships” in which a key objective was to “establish a team to oversee the design, approval and capital fundraising for a new narthex.” To that end, a Campus Team was established in late 2024. The Campus Team completed their role working with SFS Architecture, a qualified architecture firm and recommend that the Church Council approve the design and funding level of approximately \$5.7 million and move forward with the capital fundraising for a new narthex. On December 10, 2025, the Church Council approved the Campus Team's recommendation and present it to the congregation for consideration.

**GOAL**

To create space to promote fellowship for our members, encouraging greater participation and interaction before, between, and after church services and special events as well as create a welcoming space for community engagement and visitors.

**KEY DESIGN ELEMENTS**

- The overall narthex size is 3700 sq ft with the large open space being 1400+ square feet and about 18 feet of head space serving as a key gathering space before and after church services, as a possible adult Bible class location, and gathering space for non-member events.
- Addition of 3 new single-use bathrooms, including one adjacent to a flexible-use room (bride's room, gathering space for families prior to a funeral, etc.).
- Minimize physical disruption to our historic sanctuary when connecting the narthex and maximize visibility of the sanctuary.
- Pass through entry into the church will be through existing north windows and existing exit with 18–20-foot ceilings and up to 10 feet in width.
- The glass faced interconnector allows for a view of the north side of the church from the east and will stand about 24 feet above the ground.

- The interior narthex open space allows for easy viewing of the great north sanctuary window.
- Interior ramps are designed to minimize the steps needed to get from the ground level to church level.
- A courtyard will provide additional fellowship space adjoining the new narthex; the courtyard is about 1500+ square feet and can be used for a variety of functions.
- The covered driveway is designed to accommodate primarily one car in width and will prove valuable for older adults during adverse weather conditions and easier movement of caskets during funerals.
- The north new narthex windows can be re-used when adding Phase 1B.
- Visually link elements of the narthex to the historic sanctuary architecture, including a mix of surfaces (brick, glass, and a copper patina look) and decorative arches on the upper narthex windows. This follows guidelines for preservation of historic structures.
- An elevator to the church balcony is deemed to not be feasible.
- Approximately 155' of pews to be removed accounting for space to hold about 62 people.

#### **MINISTRY OPPORTUNITIES**

- Weekly fellowship before and after worship services in a space directly adjacent to the sanctuary.
- An easy area to set up for hospitality, including Sunday morning coffee.
- A clear and easily accessible space for guest information.
- Receptions to meet-and-greet new members.
- Space for SPLS Grandparent Day check-in and waiting.
- Display artwork and pictures from SPLS.
- Showcase special ministry projects.
- Reception space after SPLHS concerts and special events.
- Flexible use room can be used as a small rehearsal space for ensembles outside of the sanctuary and a space for families and participants to gather prior to funerals, concerts, special events, etc.
- Gathering space for processions (e.g., Christmas Eve, Palm Sunday, Graduation, and other things previously not explored due to space limitations)
- In general, removing physical barriers that hold people back from joining Bible classes and services.



September 3, 2025

**Phase 1a: Church Repairs & Narthex**

Church Repair Work	16,930 SF	\$348,285
Building Addition	4880 SF	\$3,533,743
Alternate #1: Decorative Arch Metalwork		\$245,486
Alternate #2: Patterned Brick		\$146,412
Site Work		\$449,697
Subtotal		\$4,723,623

**Soft Cost Allowance** (~20% of constr. cost)

Architectural / Engineering Fees		
A/E Reimbursable Costs		
Civil Engineering		
Landscape Design		
Topographical Survey		
Geotechnical Testing		
Special Inspections / Materials Testing		
Security		
Audio / Visual systems & Acoustical Design		
Furnishings / Equipment		
Miscellaneous		
Owner Contingency	5% of constr. cost	
Subtotal	at 20%	\$944,725

<b>TOTAL PROJECT COST</b>	<b>\$5,668,347</b>
---------------------------	--------------------

**Notes:**

Permits and insurance are included in construction cost.

Construction cost includes escalation to midpoint of constr: 05/15/2027.

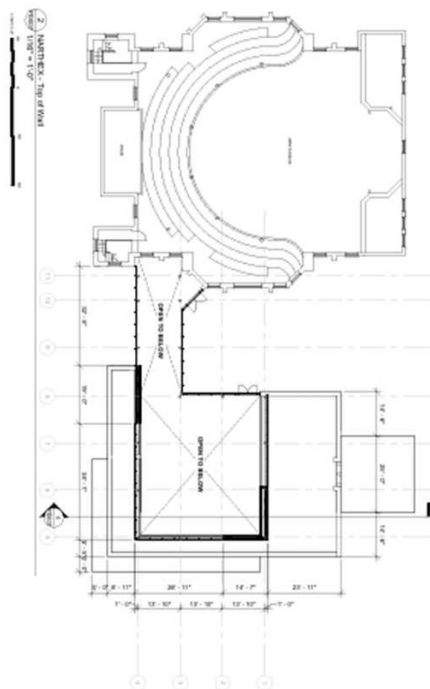
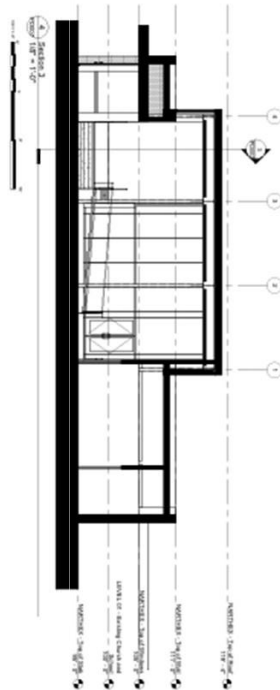
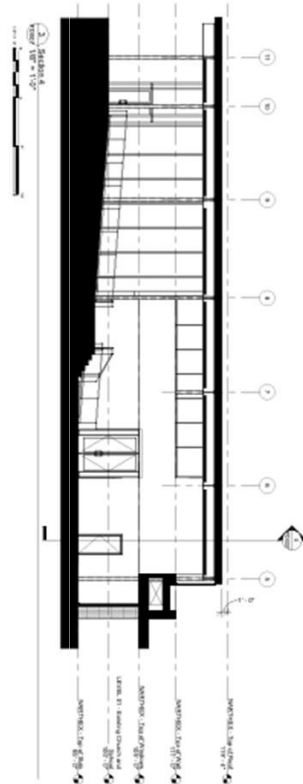
A 20% design contingency, 8% contractor overhead & profit, & 1.32% bonds & insurance is included in the construction cost at this conceptual level.

Hazardous material abatement is not included.









# CONCEPT FLOOR PLANS - Phase 1A Saint Paul Concordia Masterplan Update | 08/18/25



## **2025 CAMPUS TEAM MEMBERS**

Shannon Burrow

Andy Jones

Wyatt Jones

Jeff Martens

Kathryn Oetting

Mark Petersen

Jeff Schlueter

Dave Strobel

Nick Virus