

Merry  
Christmas



# THE WEEKLY CONNECTION

ONE IN JESUS... REACHING MANY!

2025 Christmas Edition

## WORSHIP CELEBRATION



### WELCOME! AND MERRY CHRISTMAS!

The hope of the world has come! We are so very thankful you are here to worship with our St. John Lutheran Church & School family as we celebrate this true hope! We pray you will be blessed through the interactions you will experience through God's Word and the people gathered around you. Our prayer is that you would be encouraged to know you aren't alone and you are always welcome here! St. John Lutheran Church & School is a welcoming place for those who seek to know more about what a relationship with Jesus is all about!



### HOLY BAPTISM

On Sunday, December 28, at the 9:30 Traditional Praise worship service we celebrate the baptism of Julian Wolfgang Klausmeier, son of Jacob and Haley Klausmeier. May God richly bless Julian and his family.

### IMPORTANT NOTES ABOUT THE LORD'S SUPPER (Christmas Eve 11:00 PM and Christmas Day 10:00 AM)

The Bible teaches that along with the bread and wine of Holy Communion we also receive the true body and blood of our Savior. Jesus' own words, "this is my body" and "this is my blood for the forgiveness of sins" reveal His Real Presence in the sacrament (Luke 22, 1 Cor. 10:15-16). The Bible also teaches (1 Cor. 11:23-32) the Lord's Supper, properly received brings great blessings, but improperly received without understanding can actually incur God's judgment. If you are a baptized Christian who has been instructed in the Biblical teaching of communion, please feel free to commune today. If you have any questions, please first speak to a pastor.

As you come forward, gluten free wafers are available by request, as well as individual cup choice of wine or lighter colored non-alcoholic grape juice (located in the center of the trays). Common cup is also offered during Traditional Praise services at the altar only. **During regular worship weekends, the Lord's Supper is celebrated in Traditional Praise on the first and third weekends of the month; and in Modern Praise on the second and fourth weekends of the month. On months with a fifth Sunday, Communion will be served at both Traditional and Modern Praise services.**



We hope to see you back this upcoming weekend as the Christmas celebration continues! We are a Biblical church that seeks to connect God's Word and timeless truth to people in relevant ways that help them best connect with the Lord's presence through worship. With this in mind, we intentionally offer different worship times and styles, fully knowing that schedules and musical style preferences vary.

### **MODERN PRAISE WORSHIP**

**Saturday at 5:00 PM | Sunday at 10:45 AM (also online)**

Modern Praise offers a relaxed, modern Lutheran worship celebration led by guitars, keyboard, and drums. All services feature Bible focused teachings and the life-changing love of Jesus is shared through His Word. The Lord's Supper is celebrated on the second, fourth, and fifth weekends of the month.



### **TRADITIONAL PRAISE WORSHIP**

**Sunday at 8:00 AM, 9:30 AM (also online), and 11:00 AM**

This is a traditional, liturgical Lutheran worship celebration led by a pipe organ and enhanced by choirs, hand bells, brass, strings, and other classical instrumentation. All services feature Bible focused teachings and the life-changing love of Jesus is shared through His Word. The Lord's Supper is celebrated on the first, third, and fifth Sundays of the month.



## FAMILY WORSHIP ASSISTANCE

- **Children's Activity Bags** for young children are located just outside of the entry to worship. These activity bags are filled with paper, crayons, and other things to keep little ones content. Please feel free to help yourself to a bag or ask an usher to assist you.
- **A Family Worship Room**, located in the chapel off the north hallway behind the sanctuary, provides a live video feed of traditional worship services. When you feel a need to step away with your little one, this room is the perfect destination!
- **A Mom's Nursing Room**, located in rear of the Sanctuary level women's restroom, also provides a live video feed of traditional worship services.
- **A Children's Nursery** staffed with qualified, caring staff is available in the south hallway on non-holiday Sundays from 9:15 AM to 10:45 AM.

## BIBLICAL DISCOVERY



### GET INTO THE WORD

#### Winter Bible Studies & LIFEgroups Starting in January

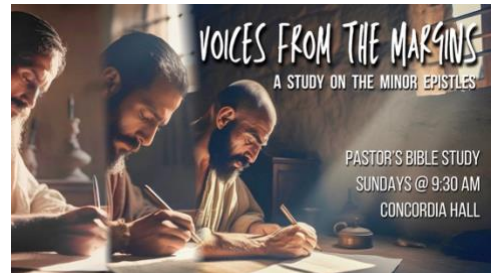
It's almost the new year and with it comes many new opportunities at St. John to grow in your faith through God's Word! New classes are beginning in January! **Scan the QR Code or visit our website to get the latest edition!**



## VOICES FROM THE MARGINS: A STUDY ON THE "MINOR" EPISTLES OF THE NEW TESTAMENT

**Pastor's Bible Study | Sundays at 9:30 AM | Concordia Hall**

Join our Pastors on Sunday mornings at 9:30 AM in Concordia Hall, **beginning on Sunday, January 4**. We are familiar with Romans, Philippians, 1 and 2 Corinthians, but what about the smaller Epistles? John's letters, Peter's letters, or even Philemon? We're going to cover these three, studying chapter by chapter and hear from the "margins", the lesser known letters. We can't wait to see you! For more information, contact Pastor Tyler at [pastortyler@stjohnrochester.org](mailto:pastortyler@stjohnrochester.org).



## DADS' BIBLE STUDY | Begins January 7, 6:00 AM – 7:00 AM | Luther Hall

This study is intended for dads of all ages and walks of faith as we grow in God's Word together, learn what it means to lead our families well, and receive encouragement in the highest calling God has for men. **Beginning on January 7**, join us on Wednesday mornings (even if you have to leave early) as we pick a book of the Bible and read through it with discussion. Coffee and bagels/donuts will be provided, so that we don't miss out on breakfast before work! For more information, reach out to Pastor Tyler at [pastortyler@stjohnrochester.org](mailto:pastortyler@stjohnrochester.org). See you in January!



## Holiday Office Hours



### CHRISTMAS & NEW YEAR'S WEEK | December 22 – January 4

The week of Christmas and the week of New Years, the office will operate on reduced holiday hours.

**Monday and Tuesday:** 8:00 AM – 4:00 PM | **Wednesday - Friday:** Office Closed

### LOVE FOR OTHERS

Did you know that St. John has a *Love for Others* special assistance fund that allows our ministry to assist people who are in immediate need of emergency help? This fund is for both St. John families and our local community. *Love for Others* has helped those who have lost income and are in need of a one-time mortgage or rent payment, or funds to avoid utility shut-offs, assist with food, gas, hospital visits, medical expenses and more. Having this fund available offers us the opportunity to pray with people, talk about their individual needs, and share God's love while helping with the necessary tangible care that can ease their worry. If you, or someone you know, need this type of assistance, please reach out to our Pastoral Office at 248-402-8020. All requests are kept confidential.

# JOIN THE ST. JOHN FAMILY

**MEMBERSHIP CLASS STARTING JANUARY 26, 2026**



Are you ready to make St. John Lutheran Church & School your home? Have you or someone you know been looking for an opportunity to learn or rediscover what real faith in Jesus is all about? Join us in a relaxed and welcoming environment where your questions can be answered.

This is a great class for anyone new to St. John or returning after being away for some time, or for those who have been worshiping with us as a guest and feel led to make St. John their church home. Whether transferring from another church or brand new to the Christian faith, the ONE Class is for you... and now is the time to enroll!

Come join Pastors Marc, Steve, and Tyler on this engaging and interactive eight-week journey through God's Word! This is an opportunity to discover the Christian Lutheran faith and understand how our church and school mission and vision are rooted in its teachings. This is also a great opportunity to meet new friends and share your faith journey with others!

**This class meets Monday evenings from 7:00 to 8:30 PM, beginning on January 26. The last day to register for this class is February 2. Childcare is available for those who need it!** Upon completion of the class, participants are welcomed to prayerfully consider official membership as part of the St. John family.

Contact our St. John Ministry Engagement Coordinator, Deana Stevens, at 248-402-8004 or [dstevens@stjohnrochester.org](mailto:dstevens@stjohnrochester.org) for more details!

**TO REGISTER FOR  
THIS CLASS SCAN  
THE QR CODE  
OR VISIT:**

[https://www.  
stjohnrochester  
.org/event/one-class/](https://www.stjohnrochester.org/event/one-class/)





## CHILDREN, YOUTH & FAMILIES

### SUNDAY SCHOOL | Sundays at 9:30 AM | Resumes January 11

Weekly Sunday School meets at 9:30 AM in the school classrooms of our building, September – May. All children ages 4 through 6th grade are welcome. Pre-registration is not required and there are no attendance requirements. We look forward to seeing your children and sharing with them the love of Jesus!



*Sign up for our Sunday School email list to get updates! Sign up at the Sunday School kiosk or on our website at [stjohnrochester.org/groups/childrens-sunday-school](http://stjohnrochester.org/groups/childrens-sunday-school)*

### MIDDLE SCHOOL YOUTH MINISTRY | Resumes January 11

MSY is a place where Middle School students can come and feel safe and at home. It is also a place for students to bring their friends to share Jesus. Our activities include students in grades 6-8, and all are welcome! MSY usually meets on Sundays from 12:30-2:30 PM in the Youth Room. For more information, please contact Melissa Hammett at [mhammett@stjohnrochester.org](mailto:mhammett@stjohnrochester.org).



### MIDDLE SCHOOL YOUTH LOCK-IN

**January 30 from 7:00 PM - 7:00 AM**

Pizza, Games, Devotion, Surprises! SO. MUCH. FUN. All middle school youth (grades 6-8) are invited to join us for our annual lock-in on January 30. This is a completely student-planned event, packed with high-energy games, powerful devotion time, delicious late-night pizza, and a whole bunch of surprises you'll only discover if you're there! For more information and to register scan the QR code or visit [stjohnrochester.org/event/2026-middle-school-lock-in/](http://stjohnrochester.org/event/2026-middle-school-lock-in/).



### HIGH SCHOOL YOUTH MINISTRY | Resumes January 11

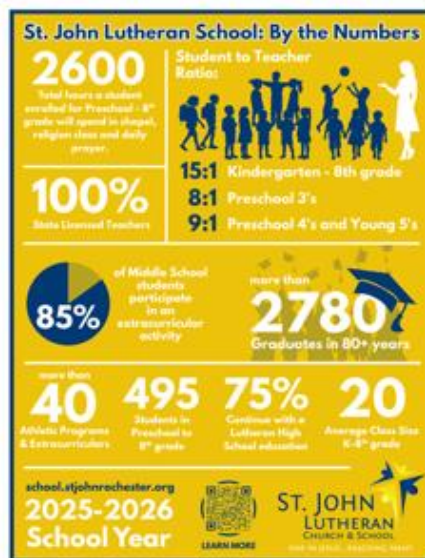
High School is a defining part of a person's life. Students begin to really settle into their beliefs about the world, God, their purpose, etc. During this influential time, we want students to be surrounded by people who know and love Jesus. HSY usually meet on Sundays 6:00 - 8:00 PM, in the Youth Room or offsite. All are welcome to join in the fun and fellowship! For more information, please contact Melissa Hammett at [mhammett@stjohnrochester.org](mailto:mhammett@stjohnrochester.org).

### ST. JOHN LUTHERAN SCHOOL

Are you seeking a Christ-centered school for your child, with a challenging curriculum and a variety of fine arts and extra-curricular opportunities, all while learning God's word, serving His people, and growing closer to Jesus? St. John Lutheran School provides an excellent Preschool through 8th grade, sharing Jesus with the community since 1943.

St. John Lutheran School is fully accredited by the Michigan Association of Non-Public Schools and by National Lutheran Schools Accreditation. **Enrollment for the 2026-2027 school year is approaching!** January 12 to 22 is current student re-enrollment and new student applications may be submitted for children of St. John congregation members during this time frame. On February 2, starting at 9:00 AM, new student applications may be submitted from the greater community.

**Join us for the 3rd-8th grade School Open House on Sunday, February 1 from 12:00 - 1:00 PM!** Visit the classrooms, meet the teachers and learn more about our 3rd-8th grade. (If you missed our Preschool to 2nd grade Open House in November, personal tours are available!)



For application and enrollment information, or to schedule a personal campus tour, visit [school.stjohnrochester.org/admissions/](https://school.stjohnrochester.org/admissions/), or contact Beth Dameron, Director of Admissions, at 248-402-8012 or [bdameron@stjohnrochester.org](mailto:bdameron@stjohnrochester.org). We welcome your visit!

## SACRIFICIAL GENEROSITY



### YOUR FINANCIAL GIFTS MAKE A HUGE DIFFERENCE

Your continued financial support and partnership in the ministry and mission of St. John Lutheran Church & School is so important and is making a huge difference in changing lives for eternity in Jesus' name!

If you are worshiping onsite, offerings can be placed in the designated areas outside the sanctuary. You can also scan the provided QR Code to give online or visit our website <https://www.stjohnrochester.org/give/>. If you have any questions, please contact our Director of Operations, Steve Gauss, at [sgauss@stjohnrochester.org](mailto:sgauss@stjohnrochester.org).

## COMPASSIONATE SERVICE

### THANK YOU!

Thank you to all of the volunteers that have help spread the love of Jesus through compassionate service this year, many with simple items and acts of service that have made a real difference to our community and our Mission Partners including St. Paul, Pontiac, Family of God, Detroit, Rochester Neighborhood House, Gifts for All God's Children, Crossroads Care Center, The Luke Clinic, and more! As we continue to support our mission partners and our community, we thank you for continuing to be One in Jesus...Reaching Many!

## RELATIONAL WITNESS

### STAY CONNECTED

Every week we send out email worship updates, seasonal devotional thoughts, opportunities to serve, children's ministry news, youth ministry news, and more. These emails are intended to help you stay connected and keep growing in your faith and to experience a better sense of community with our St. John family. If you don't already receive these emails and would like to begin receiving them, please sign up on the bottom of the homepage of our website at [www.stjohnrochester.org](http://www.stjohnrochester.org) or by scanning the QR code. When you sign up you can select what types of emails you would like to receive (worship, youth ministry, service opportunities, and more.)



### FOLLOW US ON FACEBOOK AND INSTAGRAM

Another great way to stay connected to what's happening at St. John is to follow us on Facebook and Instagram! Find us on Facebook at [@StJohnLutheranChurch&School](https://www.facebook.com/StJohnLutheranChurch&School) and on Instagram at [@StJohnRochester](https://www.instagram.com/StJohnRochester).

## CONSTANT PRAYER

### WE WOULD LOVE TO PRAY FOR WHATEVER IS ON YOUR HEART

To submit a prayer request, please email [prayer@stjohnrochester.org](mailto:prayer@stjohnrochester.org) at any time or visit our website and click on the prayer link toward the bottom of the homepage. These requests are received by our pastors and are passed along (or kept confidential when requested) to our prayer warriors and are also included in our weekend worship.

Did you know that you can receive a weekly Prayer Update email from St. John? Each Monday, an email message is sent to those who have subscribed to receive Prayer Updates. This update includes additional prayers received through the weekend that were not able to be included in the Connection (due to the timing of printing). If you would like to subscribe to the Prayer Update email list, just go to our website [stjohnrochester.org](http://stjohnrochester.org), click at the bottom on "Stay Connected with Email" and chose Prayer Updates. For more information, please contact the pastoral office at 248-402-8020.





# SJFamily

One in  
Jesus...  
Reaching  
Many



## Ugly Sweaters, Turtlenecks, & Blazers Galore!



**Toot your horn in a  
Boss Tweed Blazer!**



Vol. 1 Edition No. 1



0 12345 67890 1





### **Festive Flannel For the Full Family**

soft-woven fabric, typically made of wool or cotton and slightly milled and raised

### **Denim is Definitely Decorative Dressing Duds**

a sturdy cotton twill fabric, typically blue, used for jeans, overalls, and other clothing.



### **Sportswear for your Super Sunday Someone**

designed for physical activity, prioritizing function, comfort, and performance with features like moisture-wicking fabrics (polyester, nylon), breathability (mesh), stretch (spandex)

## *Fresh Fittings*







**Sup Dawg!  
These Letterman  
Jackets are  
Off The Hook!**

a classic American jacket, traditionally with a wool body and leather sleeves, featuring a large school initial (the "letter")



**Why just Deck the Halls when you  
can "Deck Out" your outerwear!**

Choose from a wide variety of wearable decorations & accessories this season.

Custom shirts and hats will make your group the talk of the Christmas party this year!

# *Bows Bells & Bling*





**"Jesus Christ is the same  
yesterday, today, and forever."**

Hebrews 13:8

(even if our fashion choices aren't)

**Merry Christmas**  
from the pastors,  
teachers, and staff of  
St. John Lutheran Church and School!

We hope you enjoyed our  
St. John version of a 90's themed  
JCPenny's Catalog as much as we  
enjoyed making it!

It is a joy and true pleasure to serve  
the Lord with you all year long!



**Worship Schedule**

**Traditional Praise:** Sundays at 8:00 AM, 9:30 AM (also online), and 11:00 AM

**Modern Praise:** Saturdays at 5:00 PM | Sundays at 10:45 AM (also online)

1011 W. University Dr. | Rochester, MI 48307 | 248.402.8000 | [stjohnrochester.org](http://stjohnrochester.org)