



MONTHLY NEWSLETTER CONNECTPOINT FEBRUARY 15, 2023

CONNECTING ALL PEOPLE WITH GOD'S
EXTRAVAGANT LOVE

CONTENTS

- ARCHIVES HIGHLIGHT
- DISCIPLESIP
- SALEM PARTNERS WITH
EPWORTH DROP-IN CENTER
- THE HOPE OF SPRING
- 2022 SNAPSHOT (INSERT)

CONNECT WITH US



Ash Wednesday Worship

February 22, 7:00 pm | Mid-County Site

Celebrate the beginning of Lent with worship featuring imposition of ashes, music, Holy Communion, and engaging message. Nursery care will be available. Join us in-person or online.

Easter Hop

April 1, 9:00-11:00 am | Mid-County Site

Kids Pre-K thru 5th grade are invited to an Outdoor Easter Celebration featuring egg hunt, crafts, treats, photo with the Easter Bunny, and more.

Holy Thursday Worship

April 6, 7:00 pm | South-City Site

Remember Christ's Last Supper on Holy Thursday as we join together in prayer, music, and Holy Communion. Join us in-person or online.

Good Friday Worship

April 7, 7:00 pm | Mid-County Site

Join us for a service featuring prayer, scripture, and traditional music. Nursery care will be available.

Easter Sunday Worship | Sunday, April 9

9:30 & 11:00 am - Modern Worship | Mid-County Site

9:30 & 11:00 am - Traditional Worship | Mid-County Site

11:00 am - Blended Worship | South-City Site

Experience engaging music and a powerful message of hope as we celebrate the resurrection of Jesus together.

COME JOIN US!

www.salemstlouis.com

THE HOPE OF SPRING

- REV. TERRI SWAN

*Come, let's sing out loud to the Lord!
Let's raise a joyful shout to the rock of our salvation!
Let's come before him with thanks!
Let's shout songs of joy to him!
The Lord is a great God,
the great king over all other gods.
The earth's depths are in his hands;
the mountain heights belong to him;
the sea, which he made, is his
along with the dry ground,
which his own hands formed. –Psalm 95:1-5 (CEB)*

Even though Punxsutawney Phil saw his shadow and told us we will have six more weeks of winter weather, my soul keeps telling me to put my hope in the spring that is just around the corner. I long for the warmth of springtime and all that the season involves; the budding of flowers, working in the garden, opening the windows in the house, driving down the road with my dog's head out the window, green grass, and the budding of the trees. All of creation seems to burst forth after a long winter. Resurrection happens.

Yet, we must go through the cold of winter to experience fully the beauty of the spring. Would we appreciate God's creation in the same way if all of life was the same season? I don't think so.

I think it is the same with our life journey. We have seasons of deep winter . . . times in which life is difficult and God seems silent in the cold of our despair. In faith, we pray. In faith, we sing. In faith, we worship. And yet, our hearts

seem heavy with the pain of our circumstances. We all have seasons of deep winter, but please know this: we may feel alone, but we are NEVER alone. We will never fully understand the depths of God's extravagant love, or the depths of God's grace that holds us in the midst of winter. God brings a new season and new life . . . resurrection happens!



In the church, we have a special name for this season. Lent is the season in which we prepare to celebrate the joy of resurrection each year on Easter Sunday. Lent begins on Ash Wednesday, and we will hold a special Ash Wednesday service on February 22 at 7:00 pm at our Mid-County Site. This is a joint worship service that offers an opportunity for everyone from all our sites and services to worship together. Pastor Nick will be preaching, and our music will include selections from all worship styles. Worshiping on Ash Wednesday is a great way to reflect upon the way we are making room for God in our lives.

God is in all things – we just need to have eyes to see and ears to hear. Our hearts must be open to what God is doing in the winter so that we can fully experience the spring.

In Grace and Hope,
Pastor Terri

DISCIPLESHIP: A FRAMEWORK AND A NEW OPPORTUNITY - JENNIFER ADAMS

"Go and make disciples who make disciples for the transformation of the world." We can say it so long and so often that we sometimes forget the purpose of this command – to grow constantly and contagiously to be more like Jesus. There are times our hearts long for a meaningful connection, a heart-deep transformation, a life that is lived to reflect the glory and grace and love of our God to those around us. You are not alone. Regardless of your age or stage in life, discipleship is necessary. Since my hire, I have heard two primary questions. First, where do I start? Second, what do I do next?

This year, Salem and The Connection will unveil a new church-wide discipleship framework. It will be called The Path, and it will help focus our attention on a deeper, maturing, and nourishing relationship with God and each other. When you imagine it, think about the prayer labyrinth at the Mid-County Site. Discipleship is like this. It is not a linear starting and ending point, but a path that draws us ever closer toward the center where God's love flourishes. Discipleship is growing deeper in your faith and living out that faith in community.

As part of this new framework, we are launching a new, exciting church-wide, in-depth Bible study called Covenant the first week of March. God and each other are at the heart of the Covenant study where we search Scripture and learn more about our loving, relational God and how God's nature can be reflected within our communities.

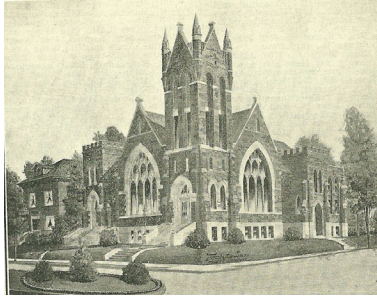
Join us either online or in person at the South-City Site or Mid-County Site. There is a seat waiting for you at the table. For more information contact Jenn Adams at jenn@saalemstlouis.com. We can't wait to see you there.



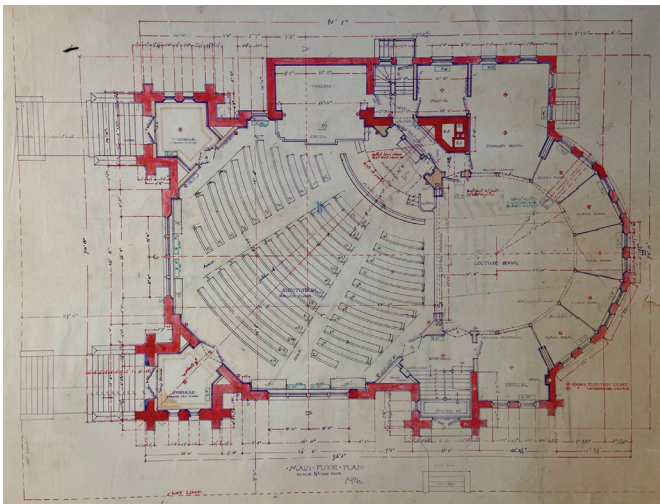
ARCHIVES HIGHLIGHT: PIPE ORGAN DRAMA AT SALEM'S THIRD LOCATION

- ELIZABETH TERRY, ARCHIVIST

The cornerstone for the new Salem M. E. Church at the corner of Page and Pendleton was laid in January 1906, kicking off the construction of the new building that had been months in planning. A committee had been formed to procure the purchase and installation of a pipe organ. The Hinners Organ Company of Pekin, Illinois, wanted the job. From October 1905 to February 1906, Mr. Hinners sent letters to the committee, anxiously soliciting Salem to be their client, "Let us again assure you...that every effort will be made to furnish you something that will absolutely be superior to anything else..." After months of exchanging blueprints, the committee selected a plan for a pipe organ and signed the contract, writing, "We expect that you will make us a first-class instrument...that will be a credit to our church as well as to yourself."



Difficulties hindered the process at every turn. While Mr. Hinners was pleased to negotiate with the committee, he disagreed with the specifications requested by Salem's organist. The two had a heated meeting and Mr. Hinners wrote to the committee, "I really regret now that I went to see him at all." The organist insisted on a certain style of pedals, prompting Mr. Hinners to write, "We want to say to you confidentially that this request is really ridiculous." Ultimately, though, the company constructed the organ as specified by the musician.



In August 1906, the enormous pipes and accompanying parts were transported to St. Louis on the Illinois Central Railroad. Salem's new pipe organ was installed the following month. However, Salem didn't immediately pay the Hinners Organ Company. Mr. Hinners wrote letters to the committee asking for the payment, "We do not want to be unduly impatient in the matter, but at the same time it is a stubborn fact that we need this money." In a subsequent exchange, the two sides disagreed on the quality of the work. The committee chair wrote that the electric apparatus made loud noises, the pipes were out of tune, and the organ didn't allow room for the choir. Mr. Hinners countered that the construction was according to the approved architectural plans. He explained that pipes required regular tuning and suggested

the church hire an organ tuner to provide ongoing maintenance. In spite of the complaints, the company continued to appease the committee, who wrote that the organ's construction was a "great mistake."

Eventually, the drama subsided and the church's pipe organ produced beautiful music for Salem's congregation for years to come.

SALEM PARTNERS WITH EPWORTH DROP-IN CENTER

Salem has a long history of working with Epworth Children and Family Services. Several Salem members have served on the Board for Epworth, volunteered to assist with fundraisers, collected aluminum cans for funds to donate for their programs, and have served this organization that is crucial to the lives of many of St Louis's children and youth in need.

In 2014, the Epworth Drop-In Center was opened to serve youth ages 11 through 20. According to their website, it is a multi-purpose, safe space where can come to relax, have fun, receive critical services, and have their most basic needs met. Equipped with a recreation room, computer lab, and full-service kitchen as well as laundry, shower, and clothes/food pantry, Epworth Drop-In Center has it all for youth in a variety of situations. Hot meals are prepared daily; case management services to help with housing, education, employment, and legal issues are readily available; and free clinical care is offered through a partnership with iFM Community Medicine, including health screens and HIV/STI testing. Additionally, educational classes are held frequently focusing on topics such as resourceful and nutritional cooking, safer sex practices, employment workshops, and much more.

From the beginning, Salem has been a part of the work at the Drop-In Center. When the Center opened, former Salem member, Lynn Cannon, spearheaded a group of volunteers who bought food and cooked meals each week for the center. In 2021, after years of volunteer service, Lynn and her husband, Bill, moved away from St Louis, and Amy Milton began to lead the cooking team at Salem that meets several times a month to cook for the Drop-in Center. In January, Amy assisted Epworth with the selection and purchase of two new electric ranges that Salem provided through our Nutrition and Literacy fund in honor of the work of Lynn Cannon. The generosity of our congregation is making a lasting impact on the lives of some of the most vulnerable young people in our community, and it a blessing to be a part of this work.

If you are looking for a place to serve, consider joining the Epworth Drop-in Center cooking team. Call the church at (314) 991-0546, scan the code, or email salemoffice@salemst-louis.com to let us know of your interest.





1200 S. Lindbergh Blvd.
St. Louis, MO 63131

Phone: (314) 991-0546
Fax: (314) 991-1242
Web: www.salemstlouis.com
Email: info@salemstlouis.com

Non-Profit Org.
U.S. Postage
PAID
St. Louis, MO
Permit No. 2013



We have a variety of teams and ministries that will help you find a place to serve and use your skills and passions. We think you'll find that the time and energy you invest will offer returns in new friendships, spiritual growth, and personal satisfaction through seeing the impact you can make to our community.

SHARE A PRAYER REQUEST



SCAN ME

Did you know you can share prayer requests with our staff and prayer team? We regularly share a prayer list with our prayer team and staff, who will pray for your request, and will contact you if you request follow-up care.



MID-COUNTY

1200 S. Lindbergh Blvd.
St. Louis, MO 63131
(314) 991-0546
salemstlouis.com

SOUTH-CITY

6701 Virginia Avenue
St. Louis, MO 63111
(314) 256-0545
theconnectionstlouis.com

**PLEASE SEND ALL MAIL FOR BOTH SITES TO
THE MID-COUNTY ADDRESS. THANK YOU!**

WORSHIP IN-PERSON OR ONLINE

In-Person Worship Schedule

Mid-County: 9:30 am - Modern Worship (Multipurpose Room)

Mid-County: 11:00 am - Traditional Worship (Sanctuary)

South-City: 11:00 am - Modern Worship (The Connection Sanctuary)

Online Worship Schedule Sundays or Anytime On-Demand

9:30 am - Modern Worship Livestream

11:00 am - Traditional Worship Livestream