

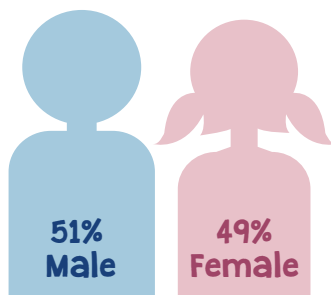
**691 Students**



**85% Catholic**



**St. Susanna**  
Parish School



## 2025-2026 Tuition Rates

- \$6,695 per student for parishoner
- \$7,195 per student for non-parishioner



**\$198,635**

given in High School scholarships in 2025

**\$485,789**

renewable High School scholarships given in 2025

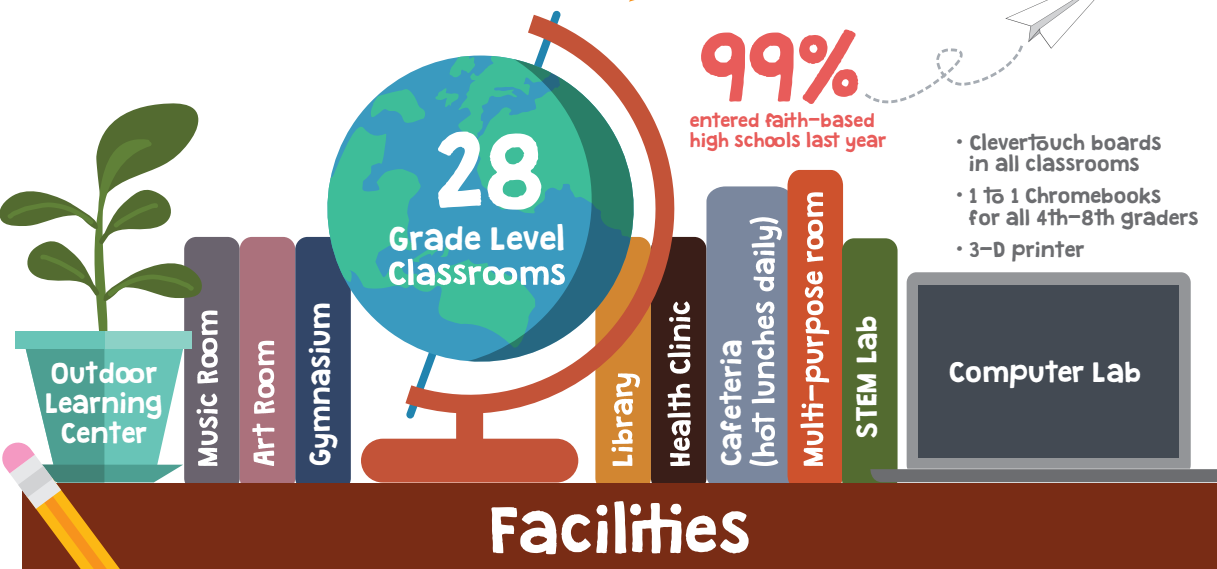


**100%**  
Graduation Rate

**99%**

entered faith-based high schools last year

- Clevertouch boards in all classrooms
- 1 to 1 Chromebooks for all 4th-8th graders
- 3-D printer



### PLUS...

- 2 Administrators
- 4 Administrative Assistants
- 1 Director of Religious Ed.
- 1 School Resource Officer

- 14 Classroom Aides
- 1 Advanced Math Teacher
- 1 Art Teacher
- 1 Librarian
- 1 Music Teacher
- 1 Physical Education Teacher
- 1 Spanish Teacher
- 1 Technology/STEM Teacher

- 1 Technology Coordinator
- 1 Health Aide/Registered Nurse
- 1 Kitchen Manager
- 10 Kitchen Staff
- 5 Cafeteria Aides
- Full-Time Maintenance Staff

### Auxiliary Services

- 1 Enrichment/Gifted & Talented Instructor
- 2 Intervention Specialists
- 2 Intervention Aides
- 1 Math Specialist
- 1 Reading Support Specialist
- 1 School Psychologist
- 1 Speech Language Pathologist

## Student Activities

Accelerated Reader Program	Champions Aftercare Program	Grade Level Field Trips	Spelling Bee
American Heritage Girls	Chess Club	Lego League	STEM
Annual Field Day	Children's Choir	Mass Servers, Lectors, Cantors	Student Buddy Program
Band (Beginning & Advanced)	DARE	Math Counts	Student Council
Board Game Club	Drama Club	Mission Outreach	Theology of the Body
Book Fairs	GCCYS Sports	Scouting (Boys and Girls)	Virtue = Strength Program
Buddy Families for New Families	Girls on the Run	Service Clubs	Yearbook
Catholic Math League	Grade Level Concerts	Ski & Snowboard Club	