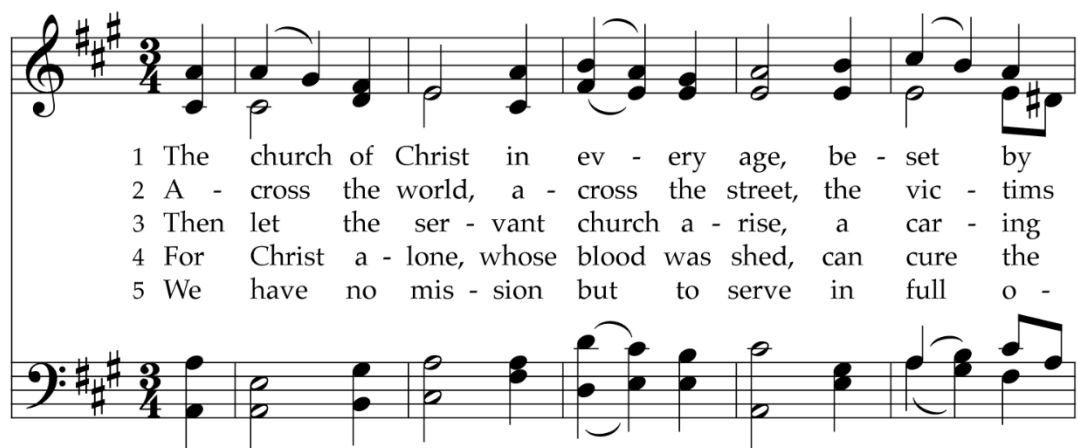


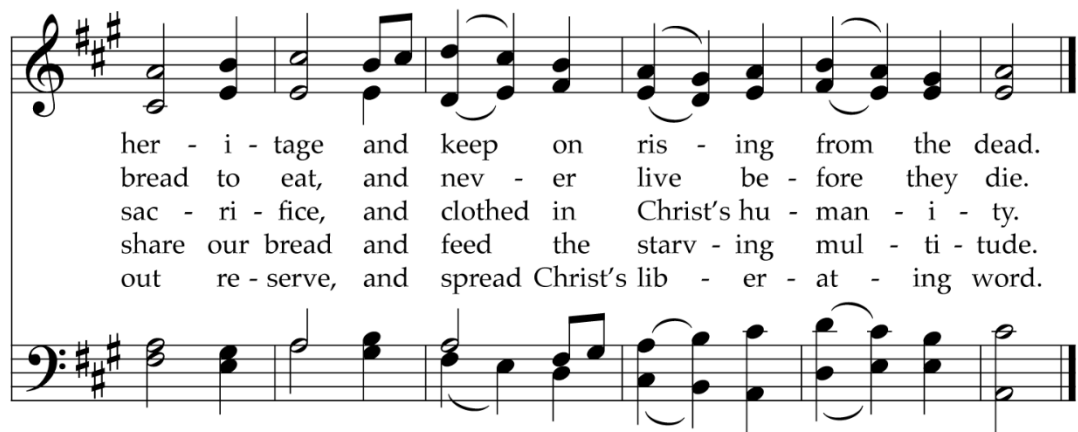
320 The Church of Christ in Every Age



1 The church of Christ in ev - ery age, be - set by
 2 A - cross the world, a - cross the street, the vic - tims
 3 Then let the ser - vant church a - rise, a car - ing
 4 For Christ a - lone, whose blood was shed, can cure the
 5 We have no mis - sion but to serve in full o -



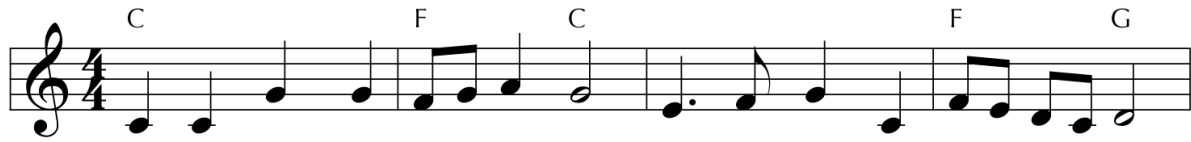
change but Spir - it - led, must claim and test its
 of in - jus - tice cry for shel - ter and for
 church that longs to be a part - ner in Christ's
 fe - ver in our blood, and teach us how to
 be - dience to our Lord: to care for all, with -



her - i - tage and keep on ris - ing from the dead.
 bread to eat, and nev - er live be - fore they die.
 sac - ri - fice, and clothed in Christ's hu - man - i - ty.
 share our bread and feed the starv - ing mul - ti - tude.
 out re - serve, and spread Christ's lib - er - at - ing word.

In this challenging text by a British Methodist minister, the odd-numbered stanzas develop the image of "the servant church," while the second surveys the many needs and the fourth describes the true source of strength for the task.

God of Great and God of Small 19



1 God of great and God of small, God of one and God of all,
2 God of land and sky and sea, God of life and des - ti - ny,
3 God of si - lence, God of sound, God by whom the lost are found,
4 God of heaven and God of earth, God of death and God of birth,



God of weak and God of strong, God to whom all things be - long,
God of nev - er - end - ing power, yet be - side me ev - ery hour,
God of day and dark - est night, God whose love turns wrong to right,
God of now and days be - fore, God who reigns for - ev - er - more,

Refrain



al - le - lu - ia, al - le - lu - ia, praise be to your name.

Although it uses remarkably simple language, this text affirms a great mystery: beyond all our powers of explanation, God holds together all the opposites that seem to pull us in one direction or another. Yet God is present to them all and also to us; for that we give praise.

TEXT: Natalie Sleeth, 1973

MUSIC: Natalie Sleeth, 1973; arr. Beverly A. Howard, 2012

Text and Music © 1973 Carl Fischer, Inc.

GOD OF GREAT AND SMALL

7.7.7.7 with refrain

317 In Christ There Is No East or West

1 In Christ there is no east or west, in him no
 2 In Christ shall true hearts ev - ery - where their high com -
 3 Join hands, dis - ci - ples of the faith, what - e'er your
 4 In Christ now meet both east and west; in him meet

south or north, but one great fel - low -
 mu - nion find; his ser - vice is the
 race may be. All chil - dren of the
 south and north. All Christ - ly souls are

ship of love through - out the whole wide earth.
 gold - en cord close - bind - ing hu - man - kind.
 liv - ing God are sure - ly kin to me.
 one in him through - out the whole wide earth.

This setting expands and enhances the thematic inclusiveness of an early 20th-century text by adapting the melody of a traditional spiritual to carry these words. This 1940 pairing marked the first use of African American musical material in a mainline North American hymnal.